



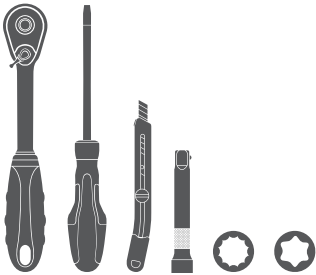
# INSTALLATION MANUAL

## Parts List

1	Headache rack
2	Stake pocket clamp
2	Side hole cover
8	Pan head thread forming screw, T-20
2	Hex bolts, 14mm
2	Flat washer, 14mm
2	Lock washer, 14mm

## Tools Required

Ratchet	Socket, 22mm
Utility knife	Extension
Flathead screwdriver	T-20 Torx bit



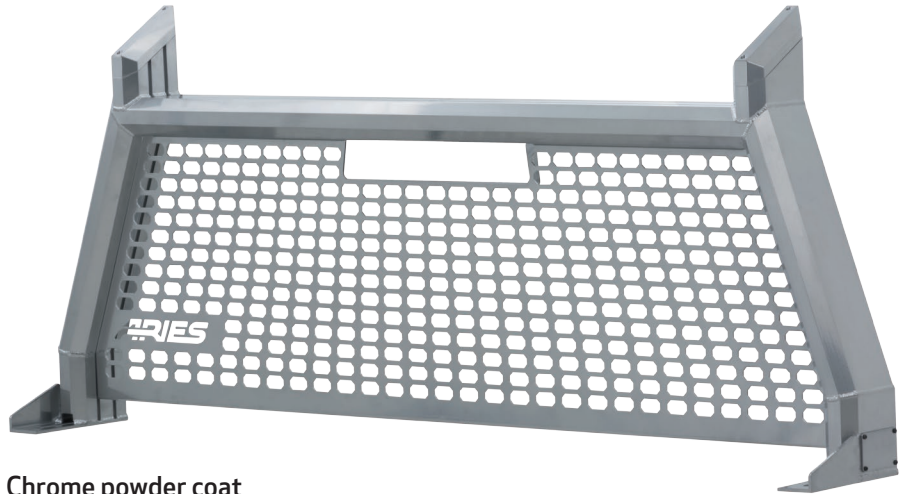
## Level of Difficulty

Easy

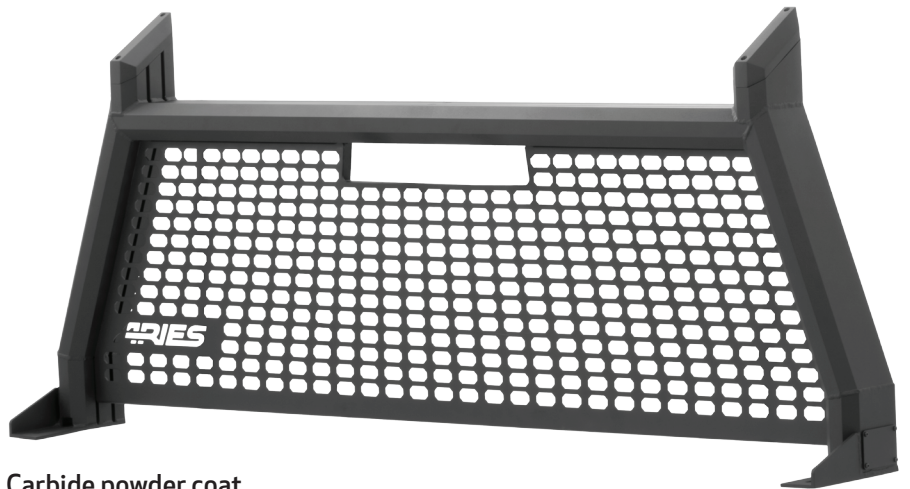


Scan for helpful install tips

## Product Image



Chrome powder coat



Carbide powder coat

## Notes and Maintenance

Before you begin installation, read all instructions thoroughly.

Proper tools will improve the quality of installation and reduce the time required.

For chrome powder coat, polish may be used to clear small scratches and scuffs on the finish. Mild soap may be used also to clean the product.

For black finishes, mild soap may be used to clean the product.

### Step 1

Starting with the driver side, locate and cut out the plastic stake pocket cover. Repeat for passenger-side stake pocket cover.

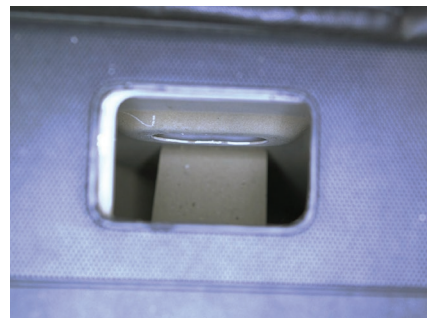
**Note:** Some vehicles have removable stake pocket covers and cutting is not necessary.



### Step 2

Insert a flathead screwdriver into the stake pocket and push in the tab to remove the plug. Repeat for the passenger-side stake pocket plug.

**Note:** Not all vehicles will have a plug to be removed. Removal is only necessary if it interferes with stake pocket clamps.

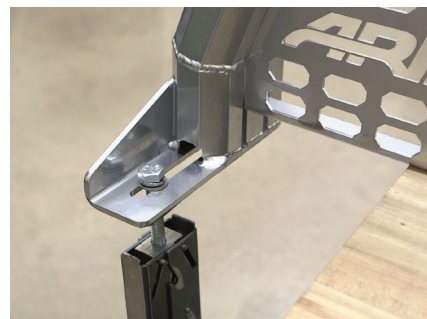
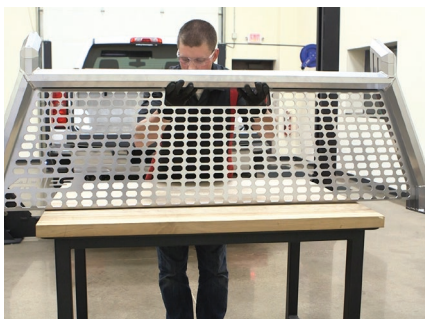


### Step 3

Place the headache rack on a work table with the slotted ends hanging off the sides of the table.

Insert a 14mm bolt, 14mm lock washer and 14mm flat washer through the slot and attach to the stake pocket clamp. The stake pocket clamp should be hanging down off the bottom of the headache rack.

Repeat to attach the passenger-side clamp to the headache rack.

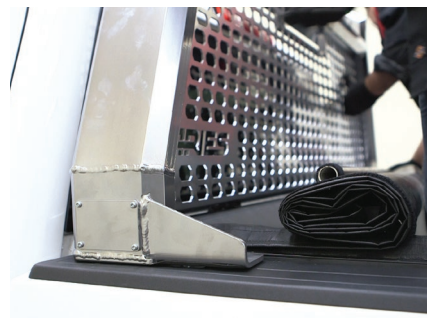


### Step 4

Carefully align the stake pocket clamps over the stake pockets.

With help, hold the clamps shut so they fit into the stake pockets and insert the clamp into the driver-side pocket.

Repeat on the passenger side.



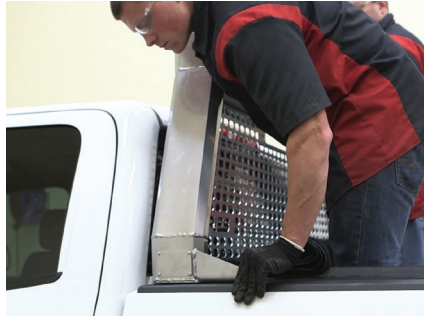
### Step 5

After both clamps have been inserted, adjust the headache rack until it is in the desired location.

Once headache rack is in place, tighten as necessary.

**Caution:** If the hardware is overtightened there could be damage to the vehicle.

**Note:** The side hole covers may need to be removed to tighten the stake pocket clamp depending on the desired position.



### Step 6

Congratulations on the installation of your new ARIES AdvantEDGE™ headache rack.

With the headache rack installed, periodic inspections should be performed to ensure all mounting hardware remains tight.

To protect your investment, see the 'Notes and Maintenance' section on the first page of this instruction manual.

