

INSTALLATION MANUAL

11623

Level of Difficulty

Easy

Installation difficulty levels are based on time and effort involved and may vary depending on the installer level of expertise, condition of the vehicle and proper tools and equipment.

Weight Carrying Capacity

Gross trailer weight (GTW)	2,000 lbs.
Tongue weight (TW)	200 lbs.

Parts List

Item	Qty	Description
1	4	Carriage bolt, 7/16"
2	4	Serrated flange nut, 7/16"
3	4	Square hole spacer, .250" x .88" x 2.25"
4	4	Fishwire, 7/16"
5	2	Hex bolt, M8
6	2	Flat washer, 5/16"
7	2	Lock washer, 5/16"
8	2	Round hole spacer, .500" x 1.25" x 2.50"

Tools Required

Ratchet	Marker
Sockets, 10mm, 12mm, 17mm	Rotary cutting tool/ reciprocating saw
Socket extension, 6"	Tape measure
Torque wrench	Die grinder
Flathead screwdriver	Aviation shears
Exhaust removal pliers	Tape

⚠ WARNING

Never exceed the vehicle manufacturer's recommended towing capacity.

Product Photo



⚠ CAUTION

Use caution when handling trimmed heat shield, edges may be sharp.

NOTICE

Visit www.curtmfg.com for a full-color copy of this instruction manual, as well as helpful videos, guides and much more!

Before you begin installation, read all instructions thoroughly.

Proper tools will improve the quality of installation and reduce the time required.

This installation requires:

- Part removal
- Trimming and hole enlargement

Periodic inspection of your product should be performed to ensure all hardware and / or components remain secure.

To help prevent damage to the product or vehicle, refer to the specified torque specifications when securing hardware during the installation process.

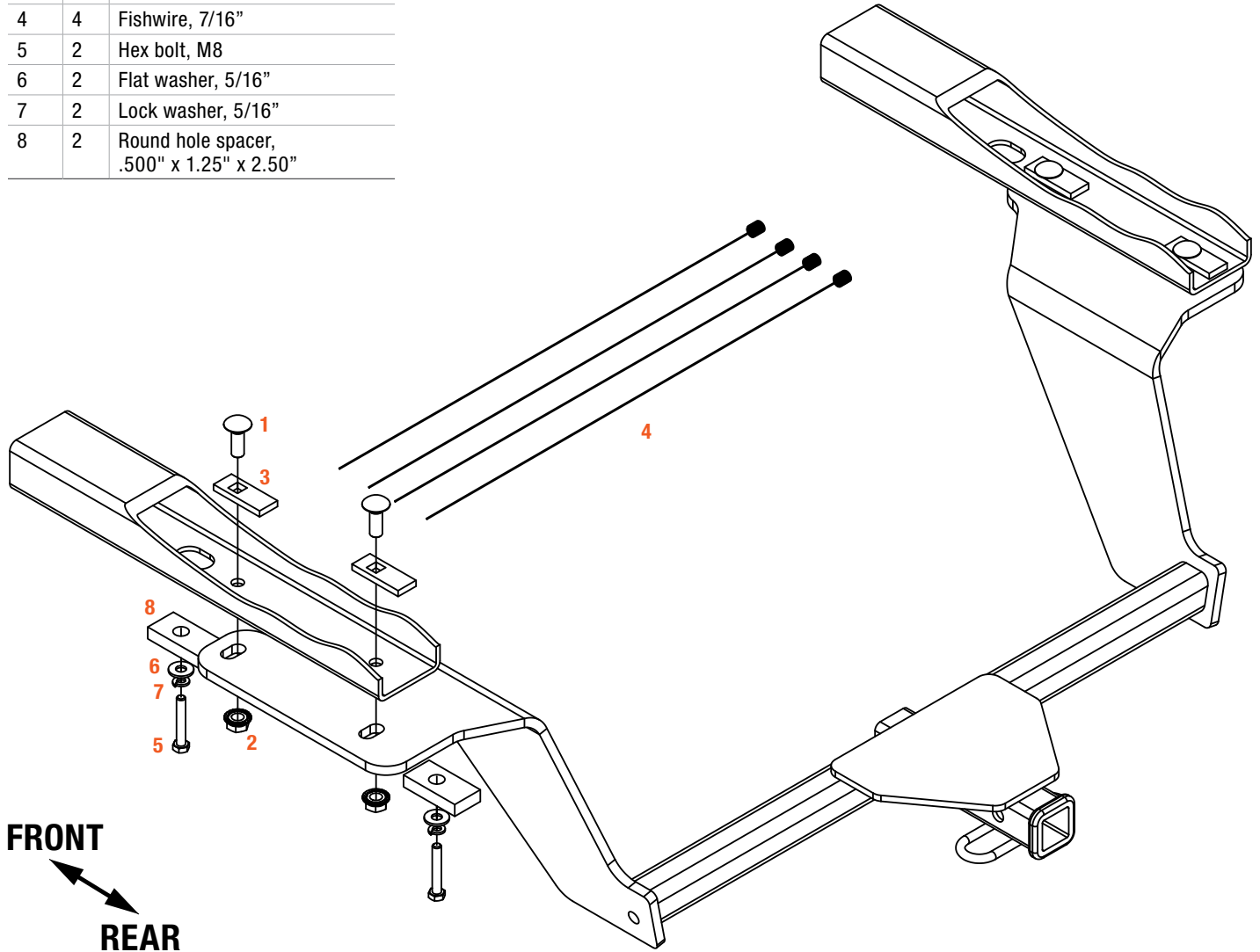
Product Registration and Warranty

CURT stands behind our products with industry-leading warranties. To get copies of the product warranties, register your purchase or provide feedback, visit: warranty.curtgroup.com/surveys

ASSEMBLY

Parts List

Item	Qty	Description
1	4	Carriage bolt, 7/16"
2	4	Serrated flange nut, 7/16"
3	4	Square hole spacer, .250" x .88" x 2.25"
4	4	Fishwire, 7/16"
5	2	Hex bolt, M8
6	2	Flat washer, 5/16"
7	2	Lock washer, 5/16"
8	2	Round hole spacer, .500" x 1.25" x 2.50"



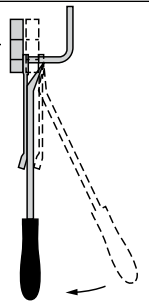
RUBBER ISOLATOR REMOVAL DIAGRAM

This technique can be used if exhaust hanger removal pliers are not available.

Using a 5/8" open end wrench, slide the wrench up to the rubber isolator, cradling the hanger rod as shown.

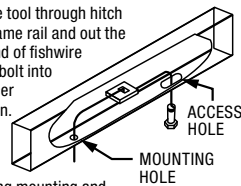
Place the flat edge of a pry bar between the wrench and the hanger stop or hanger rod. Then simply rotate the pry bar toward the wrench to remove the rubber isolator.

Note: Using a lubricant or soapy water on the hanger rod and the rubber isolator helps removal.



FISHWIRE TECHNIQUE

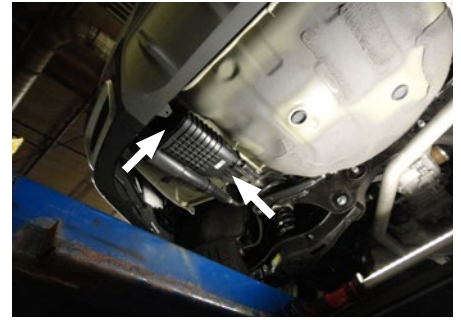
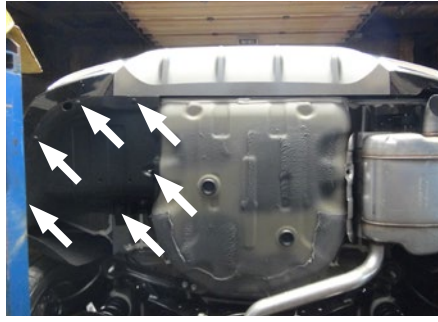
Insert coiled end of fishwire tool through hitch mounting hole in vehicle frame rail and out the access hole. Pass coiled end of fishwire through spacer and thread bolt into coil. Kink wire to keep spacer separate from bolt as shown. Pull fishwire, spacer and bolt through frame and out mounting hole. Use fishwire to guide hitch during mounting and prevent loss of bolt or spacer inside frame rail.



Step 1

Remove the four push fasteners using a pry tool or flathead screwdriver and two nuts from the underbody panel using a 10mm socket. Lower the underbody panel and set aside for trimming and reinstallation.

If equipped, remove two bolts securing the charcoal canister in place using a 12mm socket. Lower the canister and return the canister hardware to the owner.



Step 2

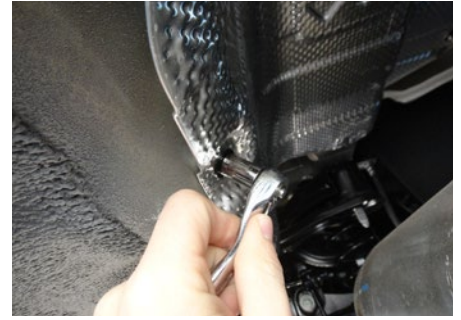
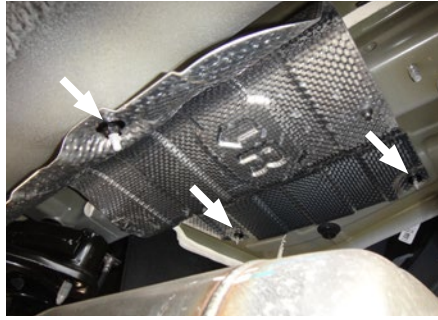
Remove two nuts on the rear-most exhaust bracket using a 12mm socket. Additionally, remove the next two rubber exhaust hangers in line as you move toward the front of the vehicle to allow the exhaust to be lowered.

Note: Be sure to support the exhaust before removing the rubber hangers and nuts.



Step 3

Remove three nuts from heat shield using a 10mm socket. Remove heat shield and set aside for trimming and reinstallation.



Step 4

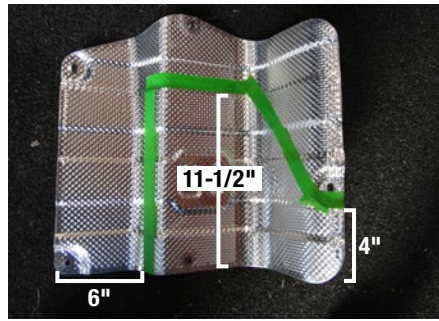
Remove the rubber plug and adhesive covers from the mounting holes and access holes located on both frame rails. Use a grinder to enlarge the forward-most attachment hole on the vehicle to 1/2" diameter on each frame rail.

Note: You may need to enlarge access hole to allow fishwiring of hardware in Step 6.



Step 5

Trim the heat shield and underbody panel using the trim diagrams as a reference.



Step 6

Use the fishwire (#4) to guide the 7/16" carriage bolt (#1) with a square hole spacer (#3) into the frame through the access hole in each frame rail. Leave the fishwire attached to the hardware. Reinstall the trimmed heat shield



Step 7

Raise the hitch into position and feed each fishwire through the slots. Remove the fishwire and secure the hitch using the serrated flange nuts (#2).

Note: Be careful not to push the hardware into the frame.



Step 8

Torque all 7/16" hardware to 59 ft-lbs.



Step 9

Reinstall the trimmed underbody panel and raise the exhaust back into position being sure to reinstall rubber hangers.

If equipped with a charcoal canister, reinstall using the M8 hex bolts (#5), 5/16" flat washers and lock washers (#6, #7) and round hole spacers (#8). Be sure to place the supplied spacer between the frame rail and charcoal canister. Torque all M8 hardware to 23 ft-lbs.



Final Installed Image



TOWING BASICS & SAFETY INFORMATION

For information on safely towing your trailer, visit curtmfg.com/understanding-towing.