

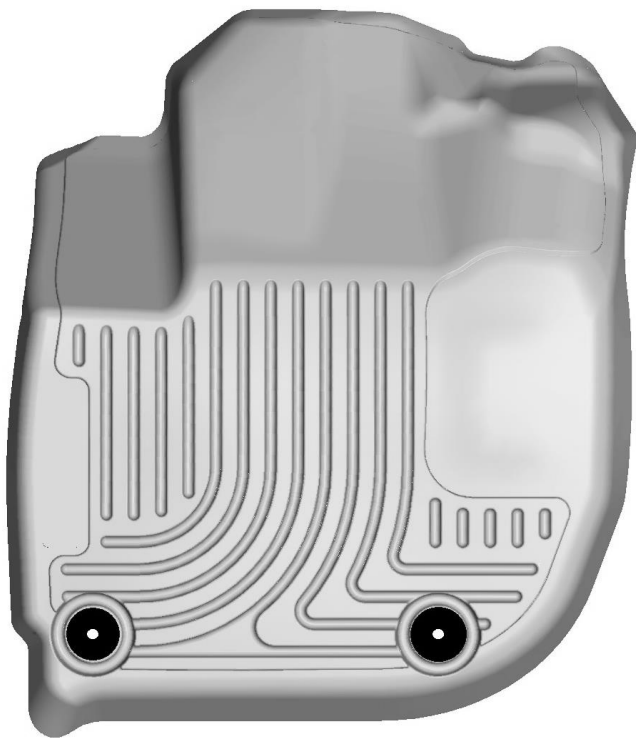
HUSKY **WeatherBEATER™** **Custom Vehicle Floor Protection**

CARE AND USE INSTRUCTIONS

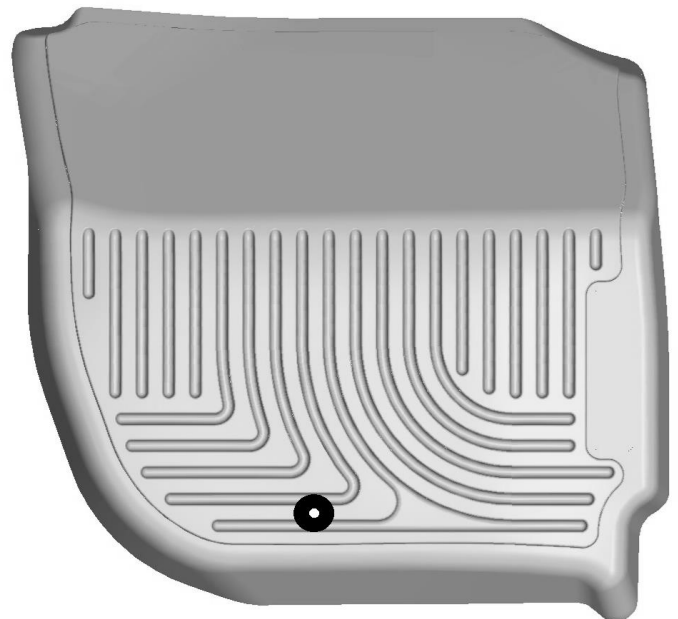
Thank you for selecting a WeatherBeater® Floor Liner from Winfield Consumer Products. Your new front floor liners are custom molded to fit your Honda Fit and Honda HR-V. The liners are made to take the place of your factory floor mats. **For correct fit, it is necessary to remove the factory floor mats before installing your new floor liners.** However, do not remove the factory-installed carpeting.

Your liners are made from an engineering resin that is lightweight and extremely tough and durable. The easiest way to clean your liners is with a damp cloth or sponge. If using a cleaner, 409® or Glass Plus® work well. Use of Armor All®, Son-of-a-Gun® or similar items is discouraged as these products make the liners slick.

INSTALLATION INSTRUCTIONS FOR YOUR HONDA FIT & HONDA HR-V FRONT FLOOR LINERS



LEFT OR DRIVER'S SIDE



RIGHT OR PASSENGER'S SIDE

TO EASE INSTALLATION OF YOUR FRONT FLOOR LINERS, SLIDE BOTH FRONT ROW SEATS ALL THE WAY REARWARD SO AS TO ALLOW THE MOST LEG ROOM. ONCE YOU HAVE INSTALLED YOUR LINERS, REPOSITION THE FRONT SEATS AS DESIRED. NOTE THAT THE DRIVER'S SIDE LINER ATTACHES TO THE FACTORY MAT RETAINING FASTENERS LOCATED IN THE CARPET.

PLEASE LOCATE IN YOUR PACKAGING THE COMPONENT BAG WITH THE FASTENER THAT WILL BE USED TO SECURE THE PASSENGER SIDE LINER IN PLACE. REMOVE THE FASTENER AND UNSCREW THE CAP FROM THE BASE (SEE IMAGE 1 BELOW). NEXT INSERT THE THREADED PORTION OF THE BASE INTO THE HOLE IN THE PASSENGER SIDE LINER, INSERTING IT FROM THE BACK SIDE OF THE LINER (SEE IMAGE 2 BELOW). WITH THIS DONE INSTALL AND POSITION THE LINER IN THE VEHICLE AND, USING A COIN, SCREWDRIVER OR SIMILAR, SCREW THE BASE OF THE FASTENER INTO THE CARPETING (SEE IMAGE 3). LASTLY, AS SHOWN IN IMAGE 4, INSTALL THE CAP ONTO THE BASE. TIGHTEN UNTIL THE CAP MEETS RESISTANCE, DO NOT OVER TIGHTEN.

