

# **HUSKY** **WeatherBEATER™** **Custom Vehicle Floor Protection**

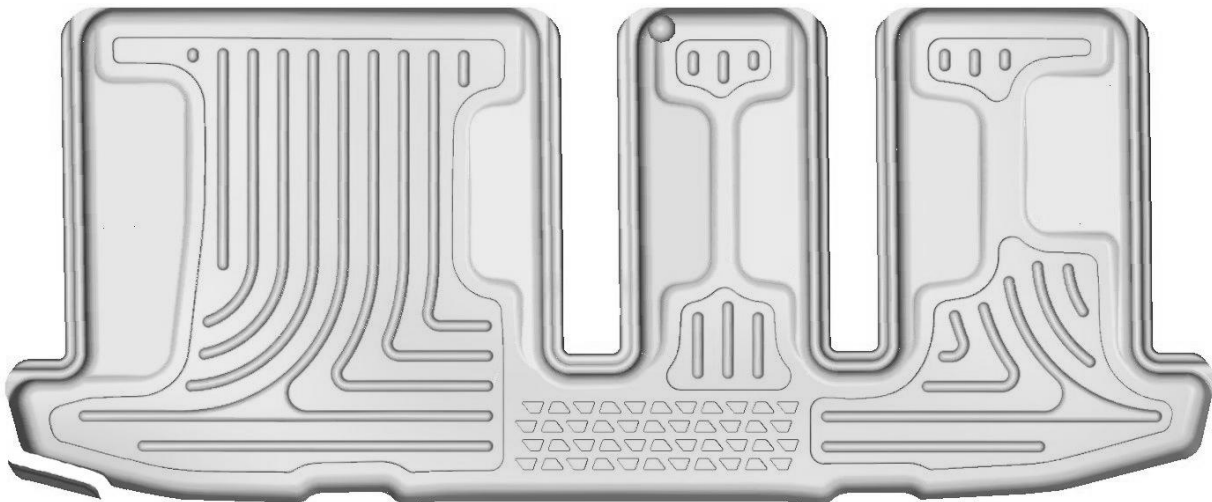
## CARE AND USE INSTRUCTIONS

Thank you for selecting a WeatherBeater™ Floor Liner from Winfield Consumer Products. Your new third seat floor liner is custom molded to fit your Infiniti JX35 and Nissan Pathfinder. The liner is made to take the place of your factory floor mats. **For correct fit, it is necessary to remove the factory floor mats before installing your new floor liner.** However, do not remove the factory-installed carpeting.

Your liner is made from an engineering resin that is lightweight and extremely tough and durable. The easiest way to clean your liner is with a damp cloth or sponge. If using a cleaner, 409® or Glass Plus® work well. Use of Armor All®, Son-of-a-Gun® or similar items is discouraged as these products make the liner slick.

## INSTALLATION INSTRUCTIONS FOR YOUR INFINITI JX35 & NISSAN PATHFINDER THIRD SEAT FLOOR LINER

### FRONT OF VEHICLE



TO EASE INSTALLATION OF YOUR JX35 / PATHFINDER SECOND SEAT FLOOR LINER, FIRST MOVE BOTH SECOND ROW SEATS COMPLETELY FORWARD TO ALLOW FULL ACCESS TO THE 3<sup>RD</sup> ROW FLOOR PAN. WITH THAT DONE, POSITION THE LINER IN YOUR VEHICLE AS SHOWN ABOVE. ONCE YOU HAVE INSTALLED YOUR LINERS, REPOSITION THE 2<sup>ND</sup> SEATS AS DESIRED.

SOME VEHICLES HAVE AN AREA IN THE DRIVER'S SIDE PORTION OF THE REAR WALL THAT JUTS OUT INTO THE FLOOR PAN SLIGHTLY. THIS FEATURE CAN CAUSE THE REAR WALL OF THE LINER TO FIT TIGHTLY. WE HAVE INCLUDED A TRIMMABLE SECTION IN THE LINER WHICH WILL ALLOW THE LINER TO ACCOMMODATE THE EXTRA BUMP. TO TRIM, SIMPLY REMOVE THE SMALL AREA AS SHOWN IN THE PHOTOS ON THE BACK OF THIS PAGE. A PAIR OF HEAVY SHEARS OR A UTILITY KNIFE WORK WELL FOR TRIMMING THE LINER