

Parts List

1	Driver / left running board
1	Passenger / right running board
2	Mounting bracket, front
2	Mounting bracket, middle
2	Mounting bracket, rear
6	T-bolt, 66mm tab
12	Hex bolt, 6mm
24	Flat washer, 6mm
12	Lock washer, 6mm
12	Hex nut, 6mm
6	Flat washer, 10mm
6	Lock washer, 10mm
6	Hex nut, 10mm
6	Bolt retainer, plastic

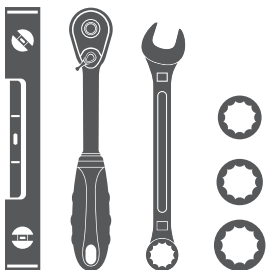
Additional Hardware*

12	Hex bolt, 8mm
12	Flat washer, 8mm
12	Lock washer, 8mm
12	Hex nut, 8mm

* Running boards are supplied with additional hardware. Quantities listed are in addition to the standard supplied hardware.

Tools Required

Ratchet	Socket, 10mm
Level	Socket, 13mm
Wrench, 10mm	Socket, 17mm



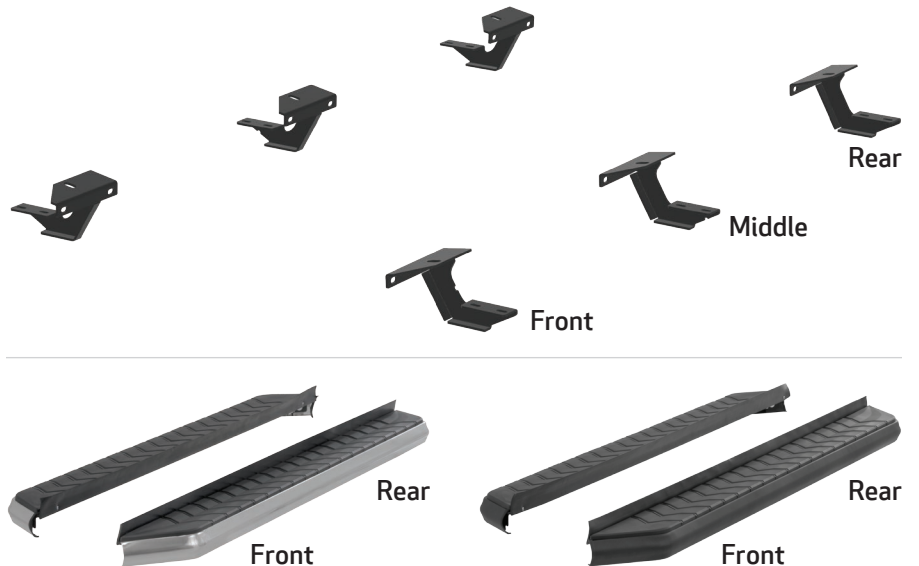
Level of Difficulty

Easy



Scan for helpful install tips

Product Image



Notes and Maintenance

Before you begin installation, read all instructions thoroughly.

Proper tools will improve the quality of installation and reduce the time required.

For stainless steel, polish may be used to clear small scratches and scuffs on the finish. Mild soap may be used also to clean the product.

For black finishes, mild soap may be used to clean the product.

Step 1

Starting on the driver side, locate the three mounting locations underneath the vehicle.

Note: Each bracket is specific to a mounting location and is stamped accordingly.



Step 2

Locate the front mounting tab and remove the tape plug. Insert a 66mm T-bolt plate into the opening. Slide a plastic bolt retainer over the thread of the bolt to hold the bolt in place.

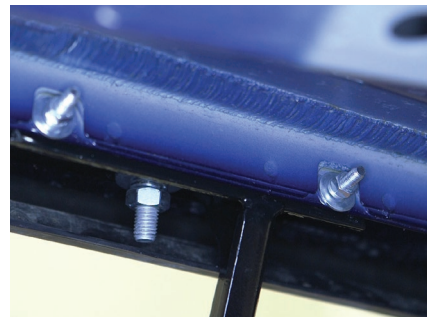
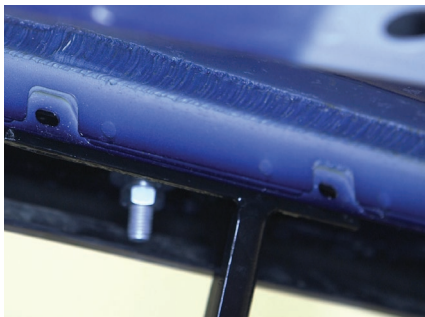
Place the front mounting bracket onto the vehicle and secure with a 10mm hex nut, 10mm lock washer and 10mm flat washer.

Snug the hardware, but do not fully tighten.



Step 3

Finish securing the front mounting bracket by inserting a 6mm hex bolt and 6mm flat washer through the second and third mounting holes and securing with a 6mm hex nut, 6mm lock washer and 6mm flat washer on the inside of the bracket.



Step 4

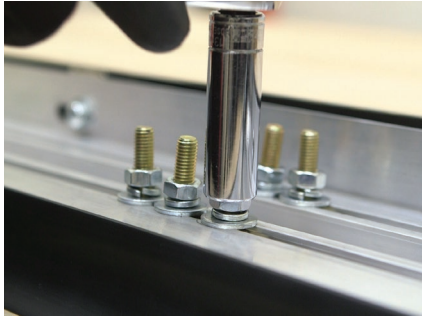
Repeat steps 2 and 3 to install the middle and rear mounting brackets.



Step 5

Remove the 8mm nuts, 8mm lock washers and 8mm flat washers from the running board.

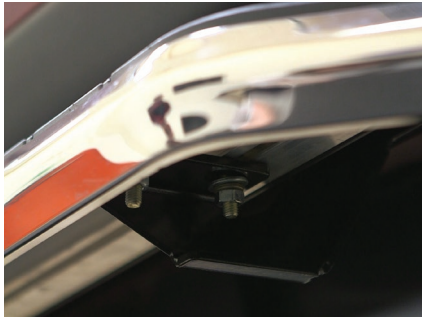
Place the running board onto the brackets and align the 8mm bolts with the slots in the brackets on the vehicle.



Step 6

Attach the running board to the brackets using six 8mm bolts, lock washers, flat washers and nuts.

Snug the hardware, but do not fully tighten.



Step 7

Adjust and level the running board, centering it between the front and rear wheel wells.

With the running board in position, it is recommended to tighten all brackets to the vehicle first, followed by the running board connections.



Step 8

Repeat steps 1 through 7 on the passenger side of the vehicle.

Congratulations on the installation of your brand new ARIES AeroTread™ running boards.

With the running boards installed, periodic inspections should be performed to ensure all mounting hardware remains tight.

To protect your investment, see the 'Notes and Maintenance' section on the first page of this instruction manual.

