

Parts List

1	Driver / left running board
1	Passenger / right running board
2	Mounting bracket, front
2	Mounting bracket, rear
2	Support arm bracket
4	L-shaped support bracket
4	Brace support bracket
12	T-bolt, 80mm tab
2	Double bolt plate
6	Hex screw, 8mm
28	Flat washer, 8mm
22	Lock washer, 8mm
22	Hex nut, 8mm
4	Flat washer, 10mm
4	Lock washer, 10mm
4	Hex nut, 10mm
16	Bolt retainer, plastic

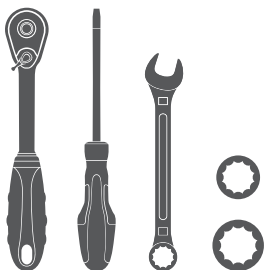
Additional Hardware*

12	Hex bolt, 8mm
12	Flat washer, 8mm
12	Lock washer, 8mm
12	Hex nut, 8mm

* Running boards are supplied with additional hardware. Quantities listed are in addition to the standard supplied hardware.

Tools Required

Ratchet	Socket, 13mm
Wrench, 13mm	Socket, 17mm
Flathead screwdriver	



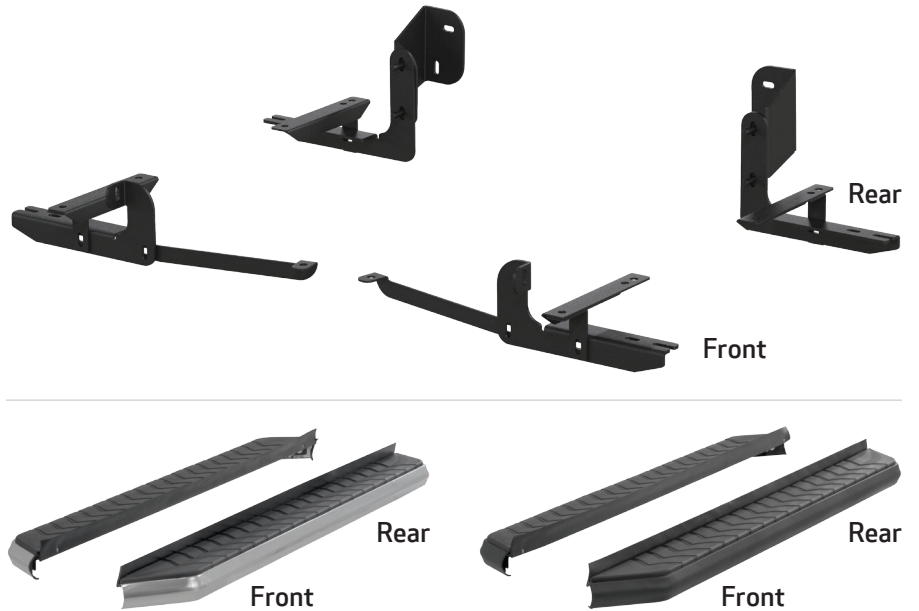
Level of Difficulty

Easy



Scan for helpful install tips

Product Image



Notes and Maintenance

Before you begin installation, read all instructions thoroughly.

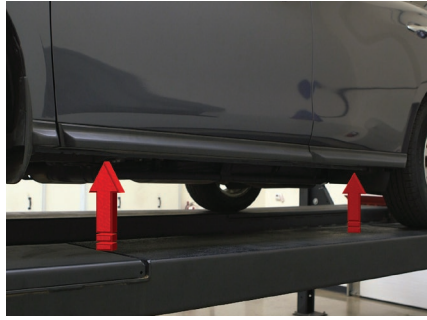
Proper tools will improve the quality of installation and reduce the time required.

For stainless steel, polish may be used to clear small scratches and scuffs on the finish. Mild soap may be used also to clean the product.

For black finishes, mild soap may be used to clean the product.

Step 1

Starting on the driver side, locate the two mounting locations on the inside of the rocker panel.



Step 2

Locate the hole plug on the front driver-side rocker panel and remove it with a flathead screwdriver.

Place an 80mm tab T-bolt into the rocker panel. Place a plastic retainer on the stud of the T-bolt to hold it in place.



Step 3

Locate the second mounting hole.

Place an 80mm tab T-bolt into the rocker panel. Place a plastic retainer on the stud of the T-bolt to hold it in place.



Step 4

Place the front driver-side bracket onto the vehicle and secure with an 8mm hex nut, 8mm lock washer and 8mm flat washer.

Snug the hardware, but do not fully tighten.



Step 5

Place the support arm bracket onto the vehicle and secure with an 8mm hex nut, 8mm lock washer and 8mm flat washer.

Snug the hardware, but do not fully tighten.

Attach the support arm bracket to the driver-side front mounting bracket using an 8mm hex bolt and 8mm flat washer through one side and an 8mm hex nut, 8mm lock washer and 8mm flat washer on the other side.



Step 6

Locate two mounting holes on the rocker panel location.

Place an 80mm tab T-bolt into each location on the rocker panel. Place a plastic retainer on the studs of the T-bolts to hold them in place.

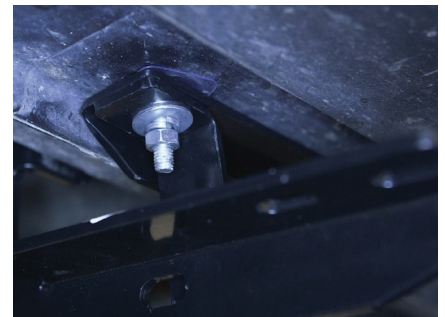
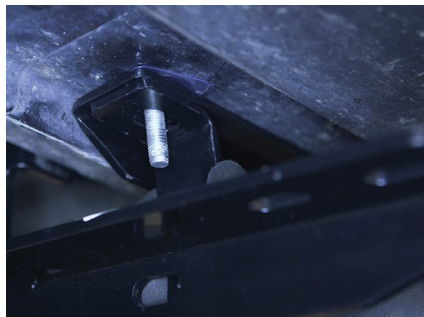
Attach one end of the brace support bracket to the vehicle using an 8mm hex nut, 8mm lock washer and 8mm flat washer.



Step 7

Place the L-shaped support bracket up to the unsecured end of the brace support bracket. Secure with an 8mm hex nut, 8mm lock washer and 8mm flat washer.

Snug the hardware, but do not fully tighten.



Step 8

Finish securing the L-shaped support bracket to the front driver-side mounting bracket using an 8mm hex bolt and 8mm flat washer through one side and an 8mm hex nut, 8mm lock washer and 8mm flat washer on the other side.



Step 9

Locate the rear driver-side mounting holes.

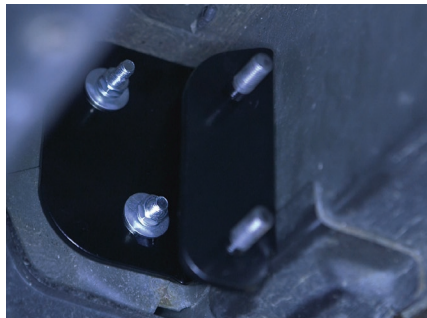
Place a double bolt plate in through the large oval hole. Place a plastic retainer on the studs of the bolt plate to hold it in place.



Step 10

Place the upper rear mounting bracket onto the vehicle and secure with two 10mm hex nuts, two 10mm lock washers and two 10mm flat washers.

Snug the hardware, but do not fully tighten.



Step 11

Place the lower rear mounting bracket up to the upper rear mounting bracket over the threaded bolts. Secure with two 10mm hex nuts, two 10mm lock washers and two 10mm flat washers.

Snug the hardware, but do not fully tighten.



Step 12

Remove the two hole plugs along the rocker panel mount.

Place an 80mm tab T-bolt into the previously exposed mounting holes. Place a plastic retainer on the stud of the T-bolt to hold it in place.

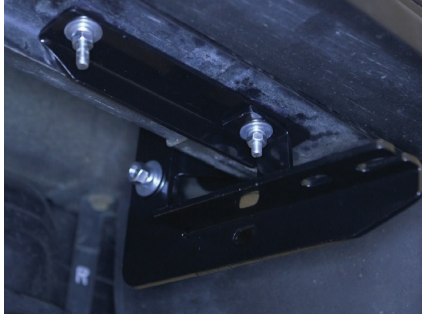
Place the brace support bracket onto the vehicle and secure one end with an 8mm hex nut, 8mm lock washer and 8mm flat washer.



Step 13

Place the L-shaped support bracket up to the unsecured end of the brace bracket. Secure with an 8mm hex nut, 8mm lock washer and 8mm flat washer. Snug the hardware, but do not fully tighten.

Finish securing the L-shaped support bracket to the mounting bracket using an 8mm hex bolt and 8mm flat washer through one side and an 8mm hex nut, 8mm lock washer and 8mm flat washer on the other side.

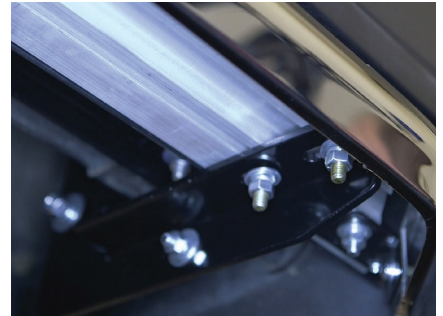


Step 14

Remove the 8mm nuts, 8mm lock washers and 8mm flat washers from the driver-side running board.

Place the running board onto the brackets and align the 8mm bolts with the slots in the brackets on the vehicle.

Attach the running board to the brackets using six 8mm bolts, six 8mm lock washers, six 8mm flat washers and six 8mm nuts. Snug the hardware, but do not fully tighten.



Step 15

Adjust and level the running board, centering it between the front and rear wheel wells.

With the running board in position, it is recommended that all brackets first be tightened to the vehicle, followed by the running board connections.



Step 16

Repeat steps 1 through 15 on the passenger side of the vehicle.

Congratulations on the installation of your brand new ARIES AeroTread™ running boards.

With the running boards installed, periodic inspections should be performed to ensure all mounting hardware remains tight.

To protect your investment, see the 'Notes and Maintenance' section on the first page of this instruction manual.

