

Parts List

1	Driver / left running board
1	Passenger / right running board
2	Mounting bracket, front
2	Mounting bracket, middle
2	Mounting bracket, rear
6	T-bolt, 43mm tab
2	T-bolt, 50mm tab
2	T-bolt, 60mm tab
10	Flat washer, 10mm
10	Lock washer, 10mm
10	Hex nut, 10mm
10	Bolt retainer, plastic

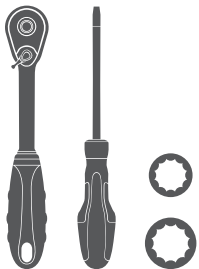
Additional Hardware*

12	Hex bolt, 8mm
12	Flat washer, 8mm
12	Lock washer, 8mm
12	Hex nut, 8mm

* Running boards are supplied with additional hardware. Quantities listed are in addition to the standard supplied hardware.

Tools Required

Ratchet	Socket, 13mm
Flathead screwdriver	Socket, 17mm



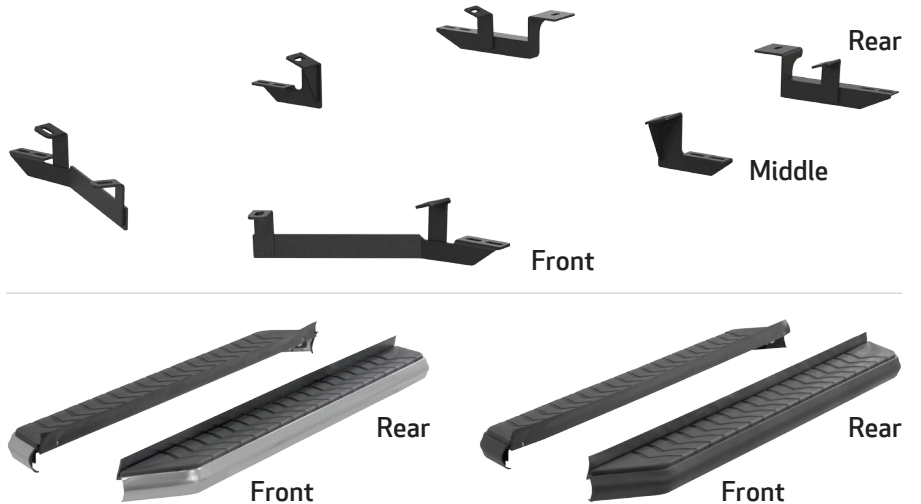
Level of Difficulty

Easy



Scan for helpful install tips

Product Image



Notes and Maintenance

Before you begin installation, read all instructions thoroughly.
 Proper tools will improve the quality of installation and reduce the time required.
 For stainless steel, polish may be used to clear small scratches and scuffs on the finish. Mild soap may be used also to clean the product.
 For black finishes, mild soap may be used to clean the product.

Step 1

Starting on the driver side, locate the three mounting locations on the inside of the rocker panel. Locate the front bracket for the driver side.



Step 2

Locate the hole plug on the front driver-side rocker panel and remove it with a flathead screwdriver.



Step 3

Place a 43mm tab T-bolt into the round hole. Place a plastic retainer on the stud of the T-bolt to prevent it from falling inside the vehicle body panel.



Step 4

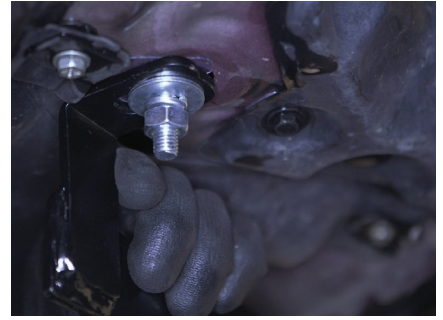
Remove the plug from the front frame mount location and install a 50mm tab T-bolt and use a plastic retainer to hold it in place.



Step 5

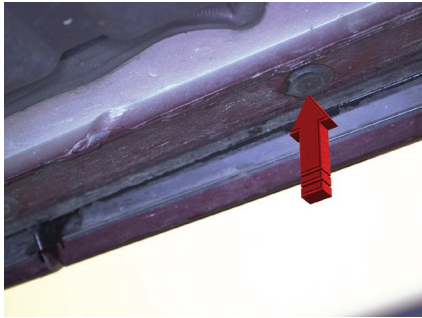
Place the front driver side bracket onto the vehicle and secure with two 10mm hex nuts, two 10 mm lock washers and two 10mm flat washers.

Snug the hardware, but do not fully tighten.



Step 6

Locate the plug for the middle bracket location and remove it with a flathead screwdriver.



Step 7

Insert a 43mm tab T-bolt into the round hole and use a plastic retainer to hold it in place.

Place the middle bracket onto the vehicle and secure with a 10mm hex nut, 10mm lock washer and 10mm flat washer.

Snug the hardware, but do not fully tighten.

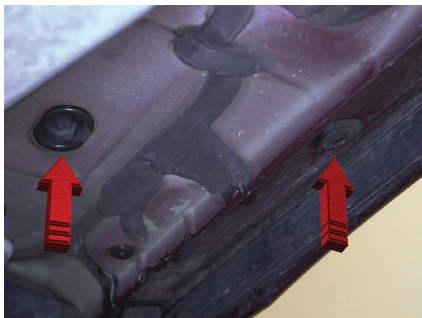


Step 8

Remove the plugs for the rear bracket rocker panel mount and frame locations.

Install a 43mm tab T-bolt and plastic retainer in the hole on the rocker panel.

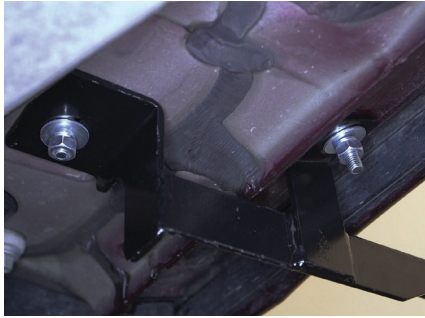
Install a 60mm tab T-bolt and plastic retainer in the hole on the frame.



Step 9

Place the rear bracket onto the vehicle and secure with two 10mm hex nuts, two 10mm lock washers and two 10mm flat washers.

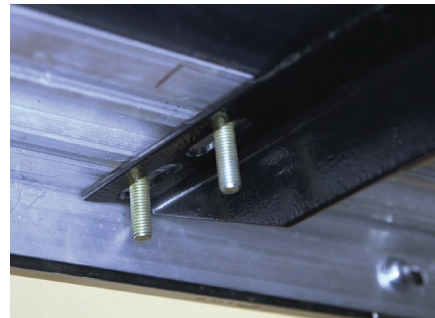
Snug the hardware, but do not fully tighten.



Step 10

Remove the 8mm nuts, 8mm lock washers and 8mm flat washers from the running board.

Place the running board onto the brackets and align the 8mm bolts with the slots in the brackets on the vehicle.



Step 11

Attach the running board to the brackets using six 8mm bolts, six 8mm lock washers, six 8mm flat washers and six 8mm nuts. Snug the hardware, but do not fully tighten.

Adjust and level the running board, centering it between the front and rear wheel wells.

With the running board in position, it is recommended to tighten all brackets to the vehicle first, followed by the running board connections.



Step 12

Repeat steps 1 through 11 on the passenger side of the vehicle.

Congratulations on the installation of your brand new ARIES AeroTread™ running boards.

With the running boards installed, periodic inspections should be performed to ensure all mounting hardware remains tight.

To protect your investment, see the 'Notes and Maintenance' section on the first page of this instruction manual.

