

Level of Difficulty

Moderate

Installation difficulty levels are based on time and effort involved and may vary depending on the installer level of expertise, condition of the vehicle and proper tools and equipment.

Parts List

Qty	Description
1	Ring Assembly
1	Mounting Bracket, driver side
1	Mounting Bracket, passenger side
2	Upper support bracket
4	Hex bolt, M12
4	Hex nut, M12
8	Flat washer, M12
4	Lock washer, M12
2	Socket head screw, M6
2	Lock washer, M6
4	Flat washer, M6
2	Hex bolt, M6 x 25mm
1	Hex bolt, M6 x 35mm
1	Fender washer, M6
1	Hex nut, M6
2	Rivet nut, M6
1	Rivet nut wrench
1	Hex key, 4mm

Tools Required

Socket Wrench	Socket Extension, Short
Socket, 8mm	Wrench, 18mm
Socket, 10mm	Torx Driver, T-30
Socket, 18mm	Utility Knife
Socket, Short Well, 15mm	Panel trim removal tools
Socket, Deep Well, 15mm	--

Torque Specifications

M6 bolt	8 ft-lbs.
M12 bolt	70 ft-lbs.

Use above torque setting unless otherwise noted

Product Photo



NOTICE

Visit www.luvernetruck.com for a full-color copy of this instruction manual, as well as helpful videos, guides and much more!

Before you begin installation, read all instructions thoroughly.

Proper tools will improve the quality of installation and reduce the time required.

Periodic inspection of your product should be performed to ensure all hardware and / or components remain secure.

To help prevent damage to the product or vehicle, refer to the specified torque specifications when securing hardware during the installation process.

Maintenance

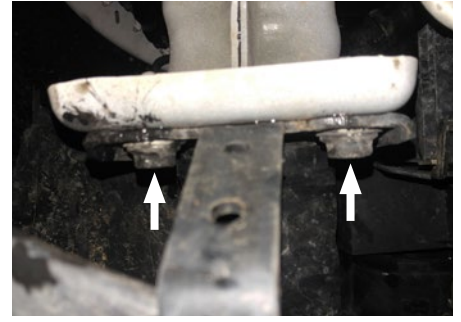
Mild automotive detergent may be used to clean the product. Do not use dish detergent, abrasive cleaners, abrasive pads, wire brushes or other similar products that may damage the finish.

Product Registration and Warranty

LUVERNE stands behind our products with industry-leading warranties. To get copies of the product warranties, register your purchase or provide feedback, visit: warranty.curtgroup.com/surveys

Step 1

On the driver side of the vehicle, locate and remove the two lower bumper mounting bolts. Attach the driver-side mounting bracket reusing the factory hardware.



Step 2

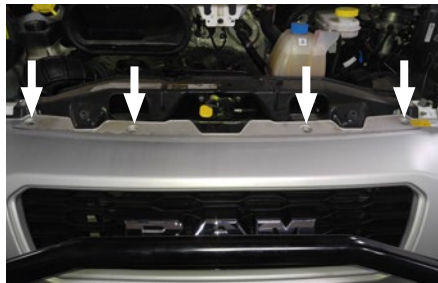
On the passenger side of the vehicle, locate and remove the three 8mm bolts securing the plastic under-tray. Pull the under-tray down and out of the way.

Repeat step 1 to install the passenger-side mounting bracket.



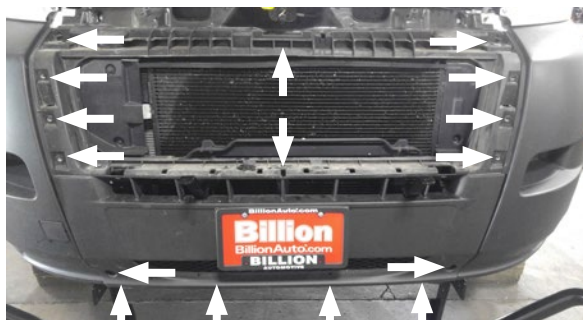
Step 3

Open the hood of the vehicle and locate and remove the six T-30 torx screws securing the grill to the vehicle. Remove the grille and set aside.



Step 4

Locate and remove the 16 T-30 torx screws securing the center fascia to the vehicle. Remove the center fascia and set aside.



Step 5

Locate and remove the three 10mm bolts that hold the cooler line to the inside of the bumper. Attach the upper support brackets to the outside two locations, reusing the factory hardware.

Note: If the vehicle does not already have threaded inserts in these locations the provided rivet nuts will need to be installed.

Assemble the M6 x 35 hex bolt, hex nut, fender washer and rivet nut in the orientation shown in the image to the right. Thread the M6 bolt into the rivet nut until it is flush at the bottom.

Insert the rivet nut into one of the outer holes in the vehicle frame. While holding the bolt stationary, tighten the M6 hex nut until the rivet nut has collapsed and is firmly in the vehicle frame. Attach the upper support brackets using the provided M6 x 25mm bolts and M6 flat washers.



Step 6

Slide the lower fascia over the upper support brackets and reattach using the hardware removed in step 4.



Step 7

Secure the grille guard to the lower mounting brackets using the supplied M12 hardware. Secure the upper mounting brackets using the M6 socket head screws, lock washers and flat washers.

Tighten all grille guard mounting hardware.

Reattach the grille using the hardware removed in Step 3.



Step 8

Mark the plastic under-tray from step 2 where it contacts the mounting bracket and use a utility knife or other cutting tool to cut a slot in the under-tray.

Reattach the under-tray using the hardware removed in step 2.

Step 9

Congratulations on the installation of your new LUVERNE SolidShield™ grille guard.

With the grille guard installed, periodic inspections should be performed to ensure all mounting hardware remains tight.

To protect your investment, see the 'notes and maintenance' section on page one.

