



4000 SERIES SIDESTEP

ASSEMBLY & INSTALLATION INSTRUCTIONS PART#4099(B-C-PS)
09-15 DODGE RAM 1500 QUAD CAB P/U 4DR 2/4WD Gas Model

Do not attempt to install this product on any vehicle other than the one it is designed for and listed above!

PACKING LIST

QTY PARTS DESCRIPTION

12 3/8" X 1 1/4" HEX BOLTS
20 3/8" FLAT WASHERS
16 3/8" LOCK WASHERS
8 3/8" HEX NUTS
4 1/2" X 2" HEX BOLTS
2 1/2" X 1" HEX BOLTS
8 1/2" FLAT WASHERS
6 1/2" LOCK WASHERS
2 1/2" HEX NUTS
4 VINYL GASKETS

QTY PARTS DESCRIPTION

4 4105TP T-PLATE
1 4105FD DRIVER FRONT BRACKET
1 4105RD DRIVER REAR BRACKET
1 4105FP PASSENGER FRONT BRACKET
1 4105RP PASSENGER REAR BRACKET
2 4105FS FRONT SUPPORT BRACKET
2 4105RS REAR SUPPORT BRACKET
1 4099D DRIVER SIDE STEP
1 4099P PASSENGER SIDE STEP

INSTALLATION INSTRUCTIONS

READ THE INSTRUCTIONS COMPLETELY BEFORE YOU BEGIN THE INSTALLATION

STEP 1. BEGIN BY INSTALLING THE DRIVER SIDE FRONT BRACKET. LOCATE THE (2) HEXAGON SHAPED HOLES IN THE UNDERSIDE OF THE BODY PANEL AT THE FRONT OF THE CAB AND REMOVE THE TAPE COVERING THE OBLONG HOLE. **PHOTO #1**

STEP 2. INSERT (1) OF THE T-PLATES THROUGH THE OBLONG HOLE IN THE BODY PANEL AND POSITION THE PLATE INSIDE THE PANEL AS SHOWN. **PHOTO'S #2 & #3.** PLACE VINYL GASKETS TO THE T-PLATES TO PREVENT FROM FALLING INTO THE BODY PANEL.

STEP 3. ATTACH THE DRIVER SIDE FRONT BRACKET TO THE BODY PANEL USING THE T-PLATE (2) 3/8" X 1 1/4" HEX BOLTS, (3) 3/8" FLAT WASHERS, (3) 3/8" LOCK WASHERS AND (1) 3/8" HEX NUT. HAND TIGHTEN. **PHOTO #4**

STEP 4. LOCATE THE HOLES IN THE SIDES OF THE FRAME RAIL BY THE FRONT BODY MOUNTING BRACKET. **PHOTO #5**

STEP 5. ATTACH (1) OF THE FRONT SUPPORT BRACKETS TO THE FRAME RAIL USING (1) 1/2" X 4" HEX BOLT, (2) 1/2" FLAT WASHERS, (1) 1/2" LOCK WASHER AND (1) 1/2" HEX NUT. HAND TIGHTEN. **PHOTO #6**

STEP 6. LOCATE THE (2) HEXAGON HOLES AT THE REAR OF THE CAB IN THE UNDERSIDE OF THE BODY PANEL AND REMOVE THE TAPE COVERING THE OBLONG HOLE. **PHOTO #7**

STEP 7. INSERT (1) OF THE T-PLATES THROUGH THE OBLONG HOLE IN THE BODY PANEL AND POSITION THE PLATE INSIDE THE PANEL.

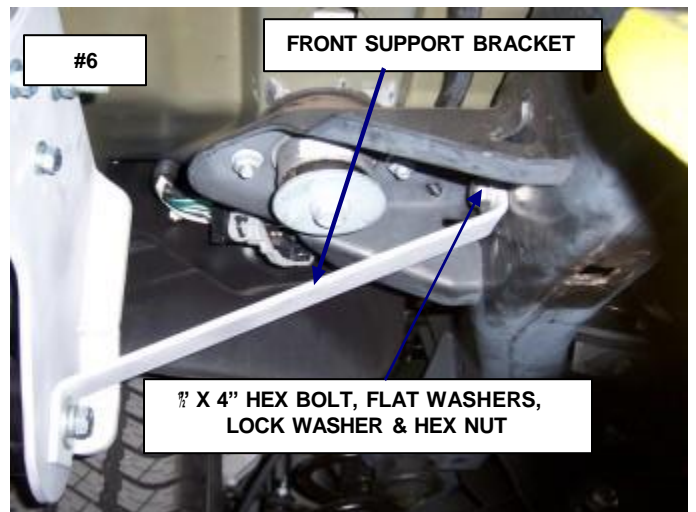
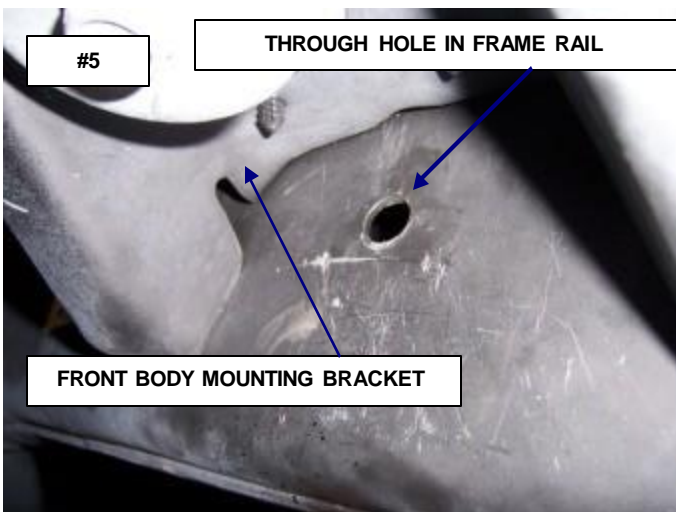
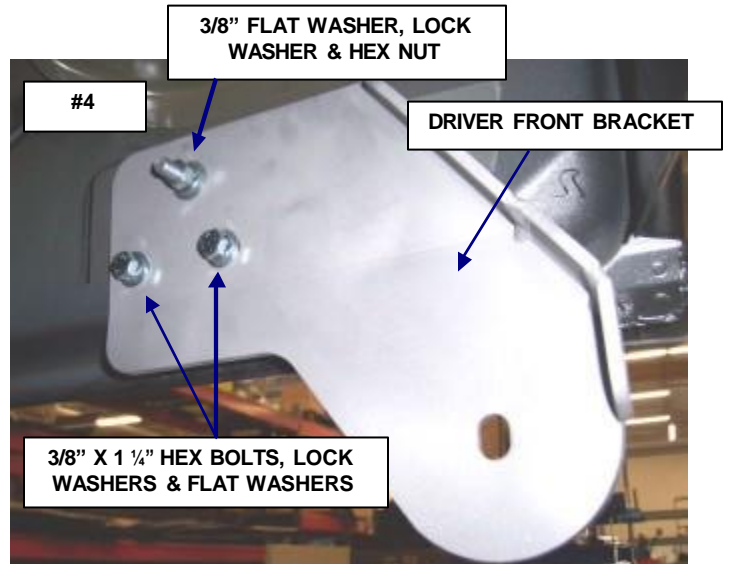
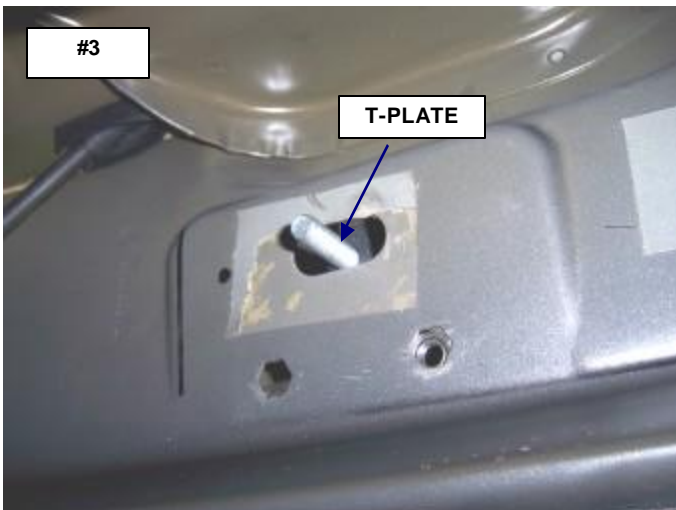
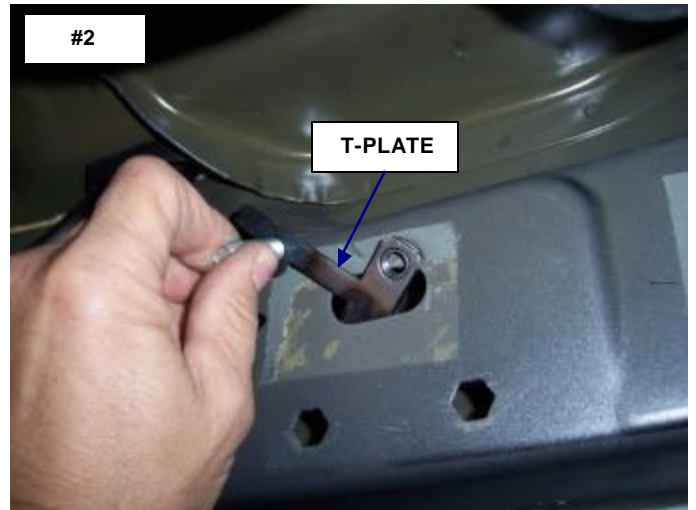
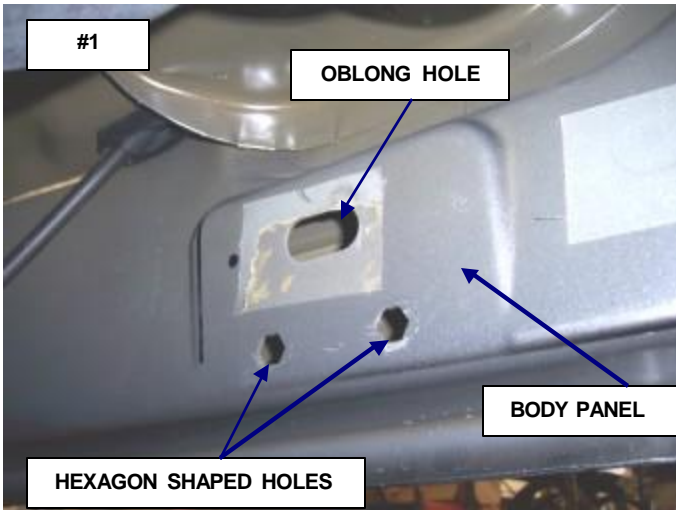
STEP 8. ATTACH THE DRIVER SIDE REAR BRACKET TO THE BODY PANEL USING THE T-PLATE (2) 3/8" X 1 1/4" HEX BOLTS, (3) 3/8" FLAT WASHERS, (3) 3/8" LOCK WASHERS AND (1) 3/8" HEX NUT. HAND TIGHTEN. **PHOTO #8**

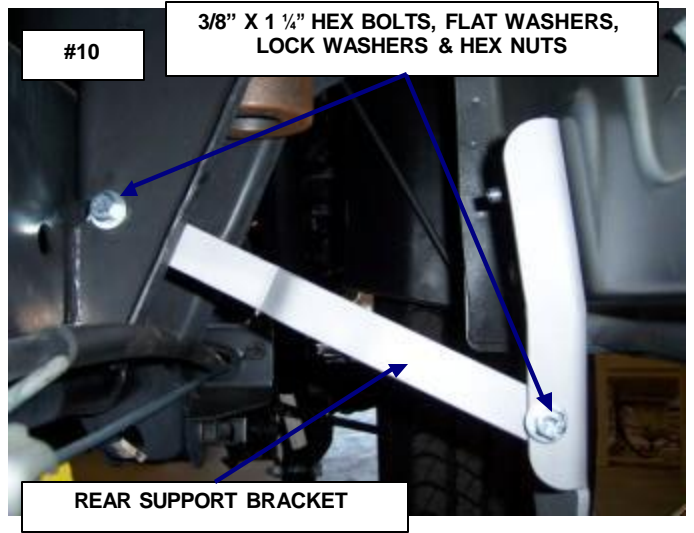
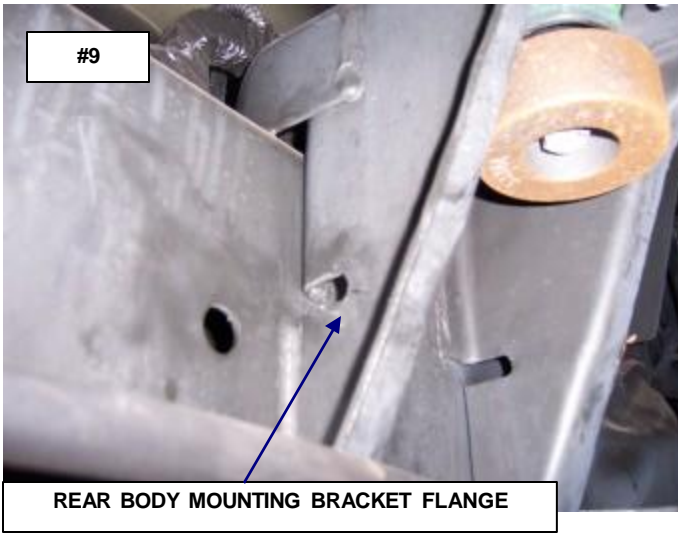
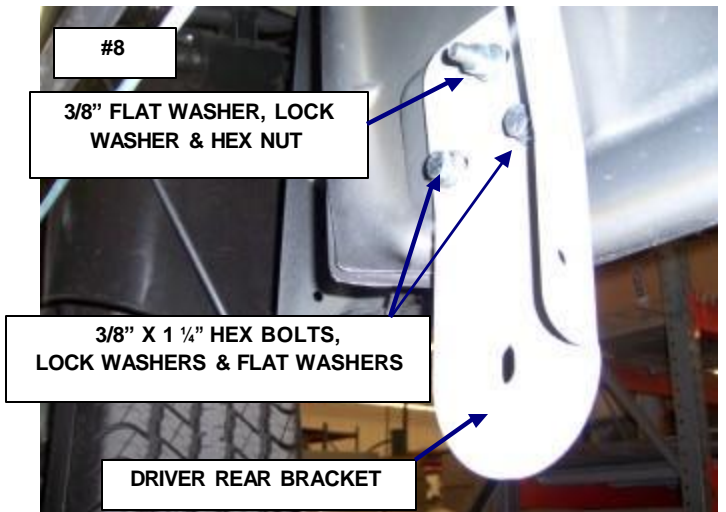
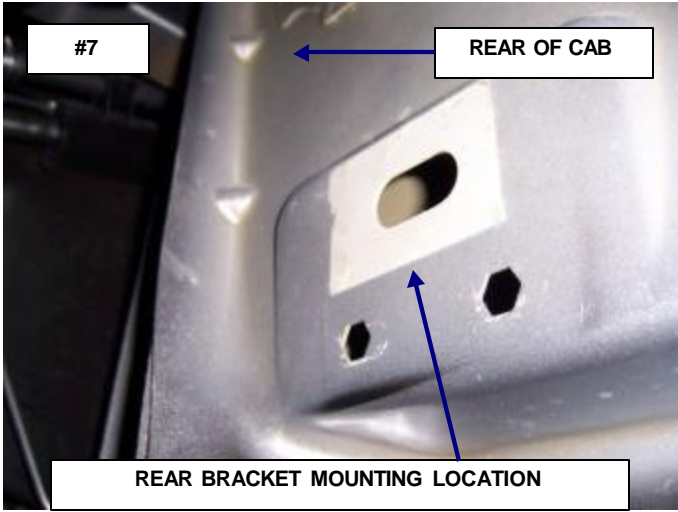
STEP 9. LOCATE THE HOLE IN THE FLANGE OF THE REAR BODY MOUNTING BRACKET. **PHOTO #9**

STEP 10. ATTACH (1) OF THE REAR SUPPORT BRACKETS TO THE FLANGE OF THE BODY MOUNT AND REAR BRACKET USING (2) 3/8" X 1 1/4" HEX BOLTS, (4) 3/8" FLAT WASHERS, (2) 3/8" LOCK WASHER AND (2) 3/8" HEX NUTS. HAND TIGHTEN. **PHOTO #10**
(For 2013 and newer models, drilling might be required to install auxiliary bracket to body mount location)

STEP 11. ATTACH THE DRIVER SIDE STEP TO THE FRONT AND REAR BRACKETS USING (1) 1/2" X 2" HEX BOLT, (1) 1/2" FLAT WASHER AND (1) 1/2" LOCK WASHER FOR EACH BRACKET.

STEP 12. ALIGN THE SIDE STEP WITH THE VEHICLE AND TIGHTEN ALL MOUNTING BRACKET AND SIDE STEP NUTS AND BOLTS. **REPEAT THE ABOVE PROCESS TO INSTALL THE PASSENGER SIDE BRACKETS AND SIDE STEP.**





(For 2013 and newer models, drilling might be required to install auxiliary bracket to body mount location)

