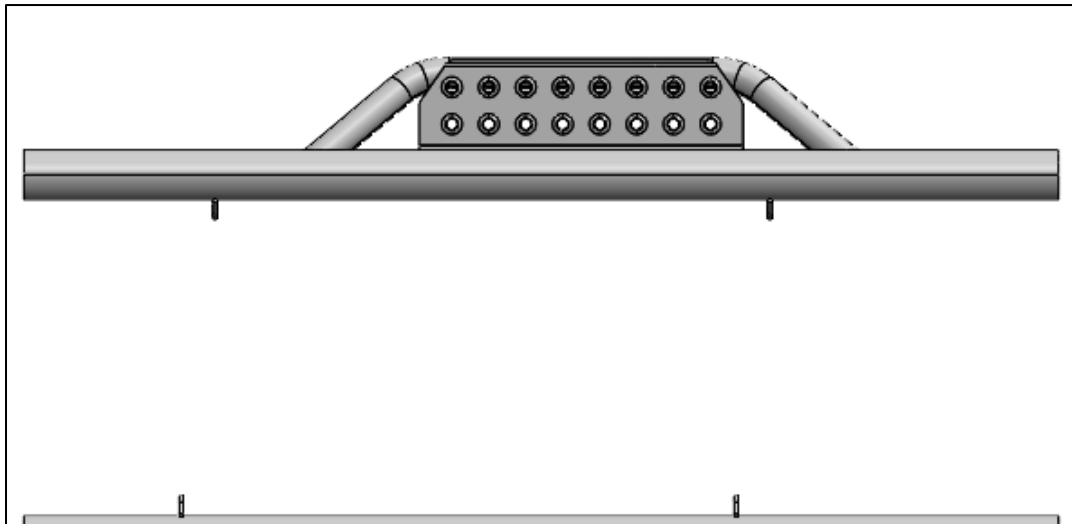


HARDWARE DESCRIPTION	QTY.
KIT# HWKT-10010X	
M8x30mm flanged hex bolt with washer	4
M8x25mm Flanged hex head bolt (Black zinc)	8
M8 flanged nuts	8
M8 Carriage Bolt	8
M8 Flanged hex nut	8



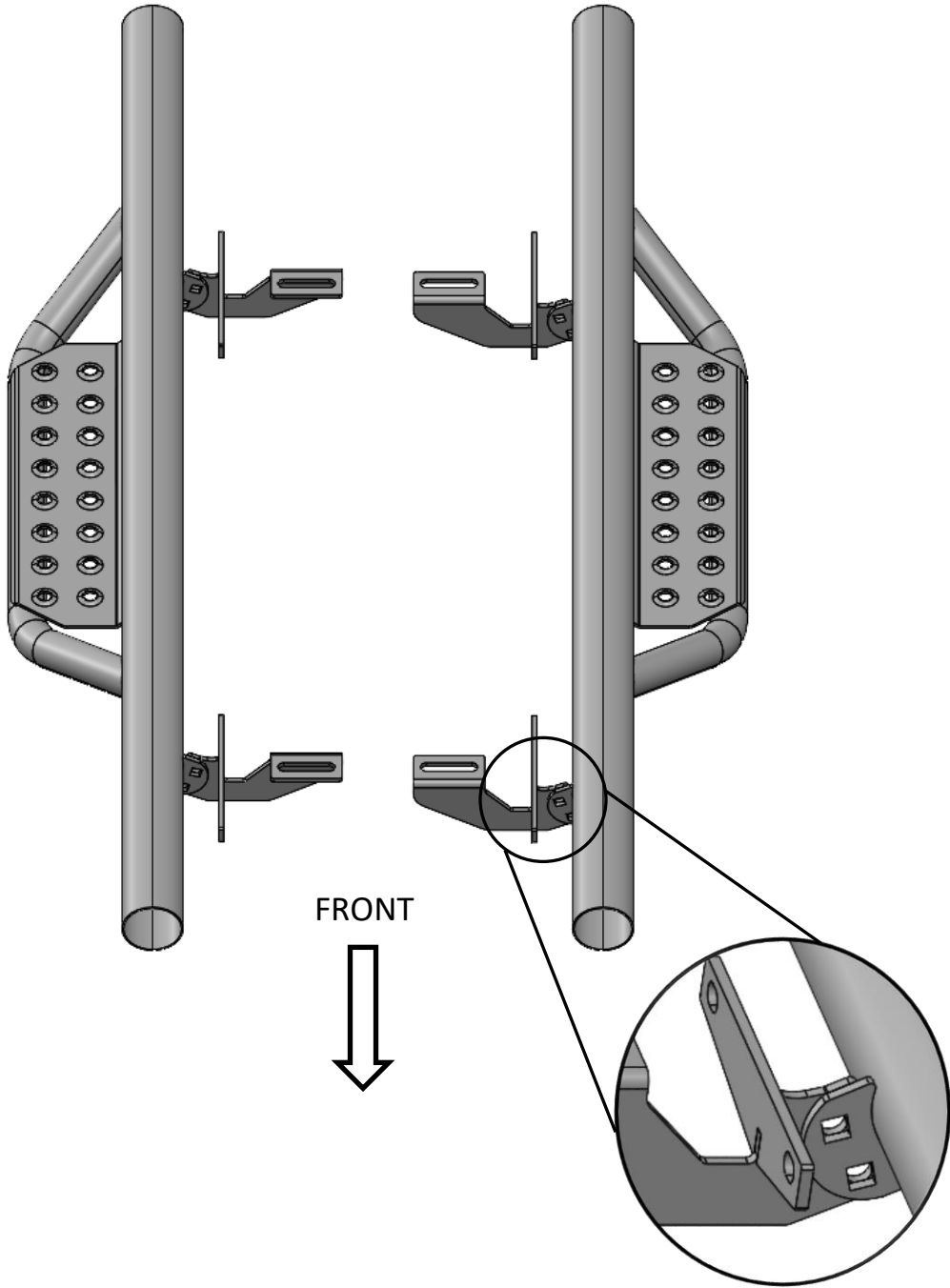
PARTS INCLUDED	QTY
DRIVER SIDE	1
PASSENGER SIDE	1
MOUNTING BRACKET	4

Step 1. Identify the driver side step.



Step 2. Install the (x4) mounting brackets to each attachment point on the main tube and leave loose for now. ***NOTE: Mount the bracket on the back side of the welded tab so the threaded part of the fastener points towards the rear of the vehicle.***

The bracket bends toward the **rear** of the vehicle on the **DRIVER** side and towards the **front** on **PASSENGER**



Step 3. Remove the factory running boards and discard.



Step 4. Carefully raise step up into position and align the brackets with the factory mounting points with the horizontal part of the bracket on the outside of the pinch weld.

Step 5. Next, start one of the supplied M8x30mm hex head flanged bolt and washer starting with the rear bracket in the factory threaded hole and leave loose.

Step 6. Start two M8x25mm black zinc flanged bolts and two M8 flanged nuts in the pinch weld and leave loose for final adjustment.



Step 9. First, tighten all the hardware that attaches the bracket to the pinch weld of the vehicle.

Step 7. Continue installing the rest of the hardware in the front brackets and leave loose.

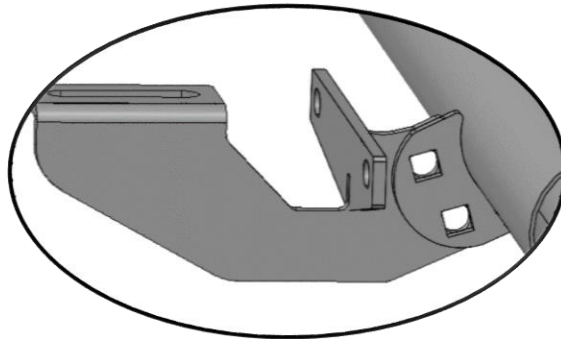
Step 8. Adjust the nerf-step where it meets the body of the vehicle.



Step 10. Next, tighten the remaining hardware that attaches the bracket to the upper body mount.



Step 11. After final adjustment, tighten brackets at the main tube.



Step 10. Repeat steps 3-11 for the passenger side.