

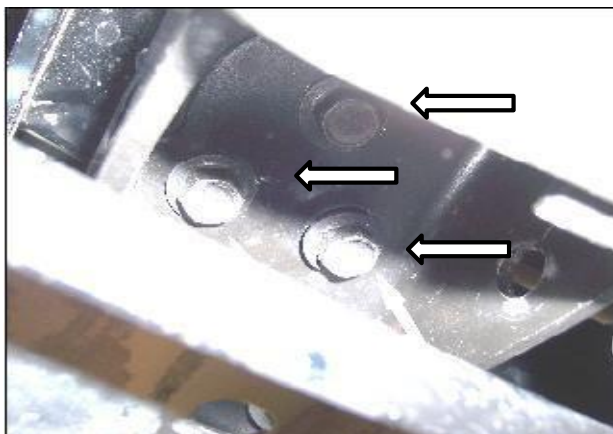
Parts List					Required Tools (Not included)	
Item	Qty.	Code	Description	Max. Torque	Qty.	Description
	1	BRK-523395	Bracket Kit		1	Ratchet
1	1		Set of Principal Brackets		1	Ratchet Extension
2	2		Auxiliary Brackets		1	9/16" Socket / Wrench
					1	15 mm Socket / Wrench
	1	KTE-521339	Hardware Kit		1	Square Drive Socket, Swivel Joint
3	2		3/8" X 1" Carriage Bolt	30 ft. lbs.		
4	4		3/8" Flat Washer			
5	4		3/8" Lock Washer			
6	4		3/8" Hex Nut			
7	2		3/8" X 1 1/2" Carriage Bolt			

Brackets	
DRIVER SIDE	PASSENGER SIDE

Instructions

1. Before beginning the installation, please read all directions carefully and verify that all necessary hardware is accounted for. If any parts are missing, stop the installation and contact your distributor immediately.
2. To maintain and care this product keep it clean and do not use abrasive cleaners or polish waxes. We recommend using only non - abrasive automotive wax such as pure carnauba to avoid scratches and rust.
3. The approximate installation time is **45 min.**
4. Beginning with the driver side loosen the (3) bolts that attach the tow hook to the frame. Access the bolts from the opening in the bottom of the frame. We recommend using a 3/8" ratchet knot. **Picture 1.**

PICTURE 1



PICTURE 2

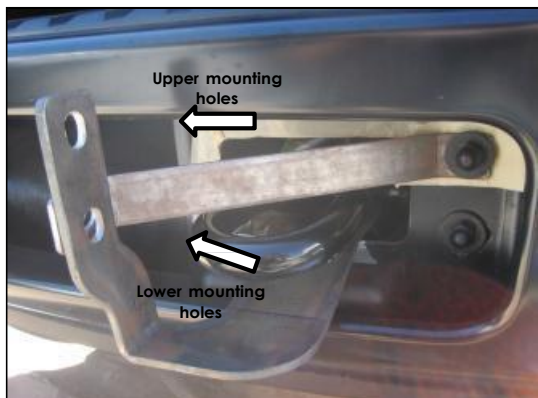


5. Slide the principal bracket into place between the tow hook and the frame. Leave the tow hook bolts loose for final adjustment. **Picture 2.**

6. From behind the bumper locate and remove the bumper bolt. Position one of the auxiliary brackets behind the bumper, so the longer leg of the bracket extends out between the top of the bumper and the bottom of the grille. **Picture 3.**

7. Attach the auxiliary bracket to the bumper using the bolt previously removed. Leave the bolt loose for final adjustment. **Picture 3.** Repeat the above steps to install the passenger side.

PICTURE 3



PICTURE 4



8. Attach the Dakar to the principal brackets using (1) 3/8" X 1 1/2" carriage bolt, (1) 3/8" flat washer, (1) 3/8" lock washer and (1) 3/8" hex nut matching the Dakar and principal bracket lower mounting hole with the auxiliary bracket hole. Use (1) 3/8" X 1" carriage bolt, (1) 3/8" flat washer, (1) 3/8" lock washer and (1) 3/8" hex nut for the upper mounting hole. Repeat the above steps to install the passenger side. Leave the bolt loose for final adjustment. **Picture 4.**

PICTURE 5



PICTURE 6



9. Align the Dakar with the front of vehicle and tighten all nuts and bolts.

10. Fill out the warranty card and place it inside your vehicle's glove box.