

# INSTALLATION MANUAL

## Level of Difficulty

Easy

Installation difficulty levels are based on time and effort involved and may vary depending on the installer level of expertise, condition of the vehicle and proper tools and equipment.

## Electrical Ratings

Signal circuits	3.0-amps per side
Tail / Running Circuits	6.0-amps total

Check vehicle owner's manual or contact the vehicle manufacturer for more information.

## Wiring Location(s)

P3 and P4

## Wiring Location Guide\* for Passenger Cars (P)

P1	Behind driver side taillight housing, outside of trunk
P2	Behind passenger side taillight housing, outside of trunk
P3	Behind driver side taillight housing, inside of trunk
P4	Behind passenger side taillight housing, inside of trunk
P5	Behind driver side rear bumper
P6	Behind center of rear bumper
P7	Behind passenger side rear bumper



\* Representative vehicle shown

## Tools Required

Panel removal tool	Wire cutter
Ratchet	Wire stripper
Socket, 10mm	Crimping tool
Flathead screwdriver	--

## WARNING

Do not exceed product rating or tow vehicle lamp load rating, whichever is lower.

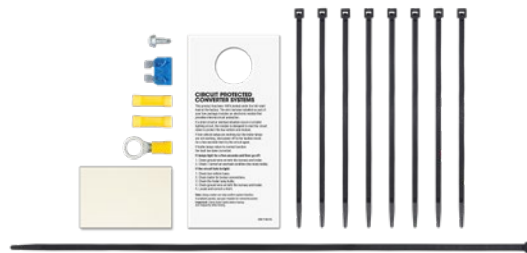
Be sure not to lay tools across the positive (typically noted with red covers or a red '+' symbol). This can cause a ground to short causing sparks and / or electrical shocks.

The battery connection must be fuse-protected, 15-amp max. Exceeding the product rating can cause loss of warranty, overheating and potential fire.

## Product Photo



## Hardware Photo



## NOTICE

Before you begin installation, read all instructions thoroughly.

Proper tools will improve the quality of installation and reduce the time required.

All steps must be followed to ensure the product will function properly. Once installed, test for proper function by using a test light or connecting a properly wired trailer.

## Maintenance

Periodic inspection of all wires and connections should be performed to ensure there is no visible damage or loose connections.

### Step 1

Open the hood and locate the battery on the driver side of the under-hood storage area. Open the storage area and remove the battery access panel and remove the ground wire from the battery. Be sure to fasten this wire down and away from the battery while completing the installation process.



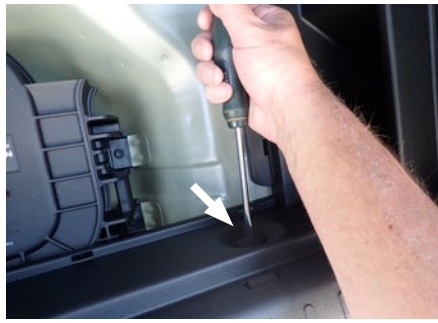
### Step 2

Open the rear hatch, remove the false floor exposing the storage space. Remove one of the access doors, and pull straight up.



### Step 3

Using a flathead screwdriver, remove the two threshold fasteners. Use the trim tool to remove the threshold trim panel .



### Step 4

Use a 10mm socket to remove the four bolts fastening the interior floor to the vehicle. Next, loosen both side panels so that you can run the wires between the panel and the vehicle body.

Starting on the driver side, remove the access panel opening and locate the vehicle taillight wiring connectors. The connectors will be similar to those on your new custom wiring product. Separate the connectors from the taillight housing taking care not to damage the locking tabs.



### Step 5

Locate the housing with the yellow wire and route it behind the driver-side side wall panel and connect to the taillight housing and the factory wiring.

Locate a flat spot in the lower compartment and adhere the module using the provided double-sided tape.



### Step 6

On the passenger side is a rotating lock that allows another access panel to open. Use caution as this houses the EV battery electrical.

Locate the housing with the green wire. Route the green wire to the passenger-side wall panel and separate the connectors, taking care not to damage the locking tabs. Connect to the taillight housing and the factory wiring.



### Step 7

Locate a flat spot near where the speaker sub is located. Adhere the black converter box using the provided double-sided tape.

## Step 8

Locate a grounding point such as an existing screw or bolt in the frame of the vehicle or drill a 3/32" pilot hole. The area should be free from rust, dirt, and paint (abrasive pad/paper to remove rust and paint). Secure the white ground wire with the ring terminal on the existing fastener or with the provided ground screw.

### **CAUTION**

Check for miscellaneous items that may be hidden behind or under any surface before drilling to avoid damage and/or personal injury



## Step 9

Route the black power wire from the vehicle battery as shown on the provided 'Powered Converter Lead Instruction Sheet' on the last page of this manual.

### **NOTICE**

Once 12 volt power wire is connected to the harness verify that the harness is functioning by attaching the battery and testing with a test light, 4-flat tester or a functioning trailer.

When in use, route the 4-flat with the center of the vehicle, and out of the hatch to the trailer be sure to stay clear of the hatches latching mechanism. When not in use roll up and store in a convenient, out of the way location. Secure any loose wires with provided cable ties.

Reinstall all items removed during install. If it was disconnected at the beginning of the installation, reconnect the negative battery terminal. Install the provided 4-flat dust cover to help prevent corrosion.

# POWERED CONVERTER LEAD INSTRUCTION SHEET

## FICHE DE CONSIGNES DU CONVERTISSEUR D'ALIMENTATION

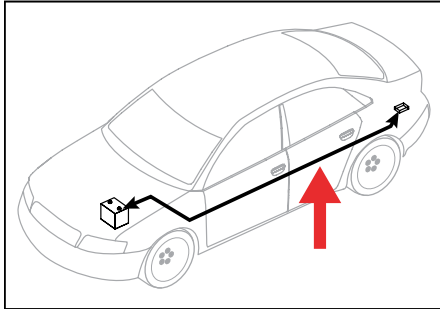
### HOJA DE INSTRUCCIONES DEL CONDUCTOR DEL ADAPTADOR ALIMENTADO POR BATERÍA

#### **NOTICE** AVIS / AVISO

Illustrations are for reference only. Battery location may differ depending on the vehicle.

Les images ne sont fournies qu'à des fins de référence. L'emplacement de la batterie peut varier en fonction du véhicule.

Las ilustraciones son solo para referencia. La ubicación de la batería puede variar según el vehículo.



#### **WARNING** AVERTISSEMENT / ADVERTENCIA

Route 12 GA wire to vehicle battery location, taking care to avoid any pinch points and hot or rotating components.

Acheminer le câble de calibre 12 à la batterie du véhicule en prenant soin d'éviter les points de pincement et les éléments chauds ou pivotants.

Pase el cable calibre 12 hacia la ubicación de la batería del vehículo, con cuidado de evitar atascos y componentes calientes o giratorios.

#### **WARNING** AVERTISSEMENT / ADVERTENCIA

To avoid personal injury or property damage, check for miscellaneous items that may be behind or under any surface before drilling.

Pour éviter les blessures et les dommages matériels, vérifier les divers articles qui peuvent se trouver derrière ou sous la surface avant de percer.

Para evitar lesiones personales o daños materiales, verifique que no haya ningún elemento detrás o debajo de la superficie antes de perforar.

#### **NOTICE** AVIS / AVISO

1. This converter system is to be used only on 12 volt negative ground systems.
2. Secure power wire to vehicle chassis using cable ties provided.
3. When passing the power wire through sheet metal, use an existing grommet, add a grommet or use silicone to protect the power wire from sharp edges.
4. Overall T-connector design may differ from illustration. The illustration should be used for power lead instruction only. Illustration is not to scale.

1. Ce système de convertisseur ne doit être utilisé qu'avec une prise de masse de polarité négative de 12 volts.
2. Fixer le câble d'alimentation au châssis du véhicule à l'aide des courroies d'attache de câble fournies.
3. Utiliser un œillet existant, ajouter un œillet ou appliquer du silicone pour protéger le câble d'alimentation des rebords tranchants au moment de le passer à travers la tôle.
4. La disposition générale du connecteur en T peut différer de l'illustration. Celle-ci ne doit être utilisée que pour le convertisseur d'alimentation. L'illustration n'est pas à l'échelle.

1. Este sistema de adaptadores solo se debe utilizar con sistemas con polo negativo a masa de 12 voltios.
2. Sujete el cable de alimentación al chasis del vehículo utilizando los sujetacables suministrados.
3. Al pasar el cable de alimentación por la lámina de metal, utilice la arandela pasacable existente, agregue una arandela pasacable o utilice silicona para proteger el cable de alimentación de los bordes filosos.
4. El diseño general del conector T puede ser distinto de la ilustración. La ilustración solo se debe utilizar para la instrucción del conductor de alimentación. La ilustración no está a escala.

