



INSTRUCTIONS—INSTRUCCIONES—CONSIGNES

APPLICATION: 2007-12 JEEP WRANGLER 2 DR
 APP PART # 21-3310, 21-3315, 23-3310, 23-3315
 E SERIES/ PLATINUM OVAL STEP BARS

ITEM	QUANTITY	DESCRIPTION	TOOLS NEEDED
1	2	STEP BARS	16MM SOCKET
2,3	2	FRONT MOUNTING BRACKETS (2) DRIVERS SIDE, (3) PASSENGER SIDE	13MM SOCKET
4,5	2	REAR MOUNTING BRACKETS (4) DRIVERS SIDE, (5) PASSENGER SIDE	ALLEN KEY (INCLUDED)
6	4	M10 X 35MM HEX HEAD BOLTS	10MM WRENCH
7	4	M10 NUT PLATES	RATCHET
8	4	M10 LOCK WASHERS	TORQUE WRENCH
9	4	M10 FLAT WASHERS	
10	4	M8 X 35MM HEX HEAD BOLTS	
11	8	M8 X 25MM HEX HEAD BOLTS	
12	12	M8 LOCK WASHERS	
13	4	M8 LARGE FLAT WASHERS	
14	8	M8 FLAT WASHERS	
15	8	M6 BUTTON HEAD BOLTS	
16	8	M6 NYLOK NUTS	
17	8	M6 FLAT WASHERS	
18	8	M6 LARGE FLAT WASHERS	

1. Remove contents from box, verify if all parts listed are present and free from damage. Carefully read and understand all instructions before attempting installation. **ANTI-SEIZE LUBRICANT MUST BE USED WITH ALL STAINLESS STEEL FASTENERS TO PREVENT THEM FROM GALLING.**
2. Start installation toward the front of the driver side of the vehicle. Determine if the vehicle is has an open floor panel or a threaded hole in the floor panel for the top tab on the Bracket, (Figures 1 & 3). Vehicles open mounting location: Insert (1) M10 Nut Plate into the large square opening in the floor panel. Line up the threaded nut with the small hole in line with the tab on the Bracket, (Figures 2A & 2B). Bolt the Bracket to the Nut Plate with (1) M10 x 35mm Hex Bolt, (1) M10 Lock Washer and (1) M10 Flat Washer. Do not tighten hardware, (Figure 4). Vehicles with factory threaded hole in floor panel: Bolt the tab on the Bracket to the threaded hole in the floor panel with (1) M8 x 35mm Hex Bolt, (1) M8 Lock Washer and (1) M8 Large Flat Washer, (Figures 3 & 4). Do not tighten hardware.

CARE INSTRUCTIONS

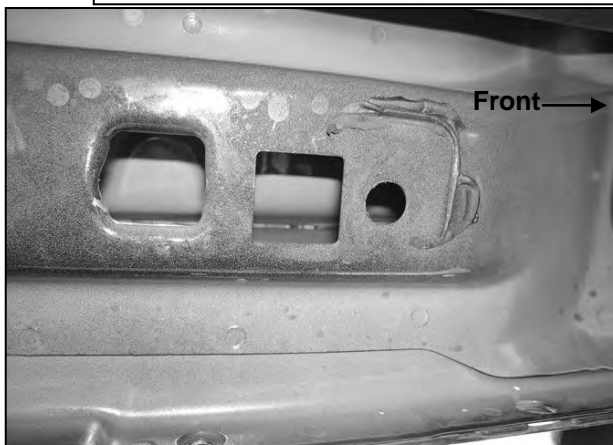
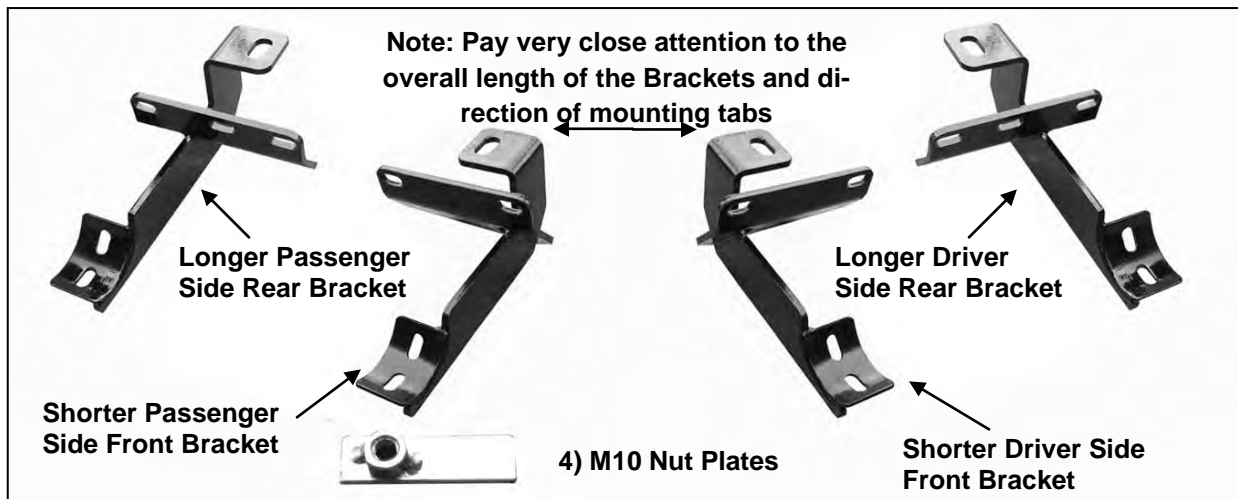
- REGULAR WAXING IS RECOMMENDED. DO NOT USE ANY TYPE OF POLISH OR WAX THAT MAY CONTAIN ABRASIVES
- STAINLESS STEEL PRODUCTS CAN BE CLEANED WITH MILD SOAP AND WATER. STAINLESS STEEL POLISH SHOULD BE USED TO POLISH SMALL SCRATCHES.
- GLOSS BLACK FINISHES SHOULD BE CLEANED WITH MILD SOAP AND WATER



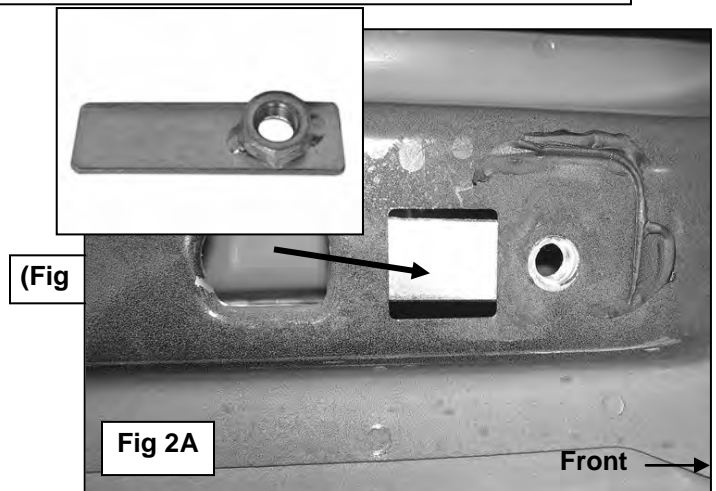
Westing Automotive Products, Inc.
 5200 N. Irwindale Ave. Suite 220
 Irwindale, Ca. 91706

Thank You for choosing Westin products
 For Additional installation assistance please call
 Customer service (800) 793-7846
www.westinautomotive.com

3. Line up the mounting plate on the Bracket with the (2) factory holes in the pinch weld. Bolt the Mounting Bracket to the back of the pinch weld using the included (2) M6 x 25mm Button Head Allen Bolts, (2) M6 Flat Washers, (against pinch weld), (2) M6 Large Flat Washers, (inside against the bracket) and (2) M6 nylok Nuts, (Figure 4). Leave loose at this time.
4. Repeat Steps 2 - 3 for driver side rear Mounting Bracket installation, (Figures 3, 5A & 5B). NOTE: Determine correct rear Bracket installation procedure for your model year: 2007 - 8: Use only the center hole on the Bracket and (1) M6 Allen Bolt, (1) M6 Flat Washer (outside) and (1) M6 Large Flat Washer, (inside against bracket), and (1) M6 Nylon Lock Nut to attach rear bracket to the back of the pinch weld, (Figures 6 & 7). 2008 - 12: Requires (2) M6 Allen Bolts, (2) M6 Flat Washers (outside) and (2) M6 Large Flat Washers, (inside against bracket), and (2) M6 Nylon Lock Nuts to attach rear bracket to back of pinch weld, (Figures 6 & 8).
5. Carefully unwrap and position the driver Sidebar onto the Brackets. Attach the Sidebar to the Mounting Brackets using the included (4) M8 x 25mm Hex Bolts, (4) M8 Lock Washers and (4) M8 Flat Washers (Figure 4). Do not tighten at this time. NOTE: The Sidebar has (2) sets of inserts to bolt the Sidebar to the rear Bracket. 2007: Use the rear set of inserts closest to the rear tire, (Figure 7). 2008 - 12: Use the forward set of inserts, (Figure 8).
6. Level and adjust the Side Bar and Brackets and tighten all hardware. Torque all M10 fasteners to 30-35 ft lbs, M8 to 25 ft lbs, and M6 to 15-20 ft lbs.
7. Repeat Steps 2 - 6 for Passenger Sidebar installation.

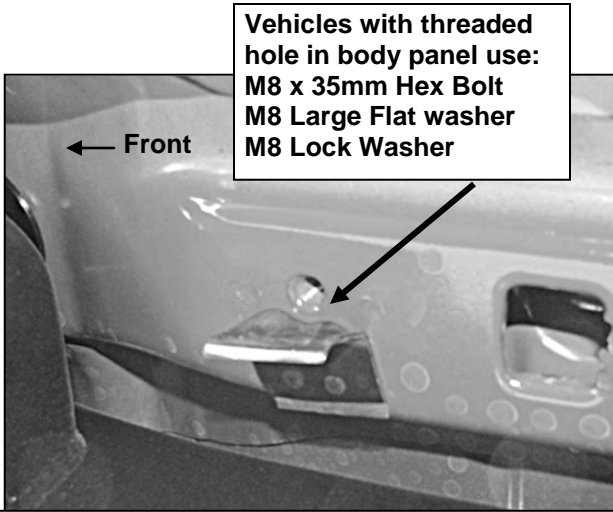


(Fig 1) 2007-10 driver side front mounting location



Westin Automotive Products, Inc.
5200 N. Irwindale Ave. Suite 220
Irwindale, Ca. 91706

Thank You for choosing Westin products
For Additional installation assistance please call
Customer service (800) 793-7846
www.westinautomotive.com



(Fig 3) 2011-12 threaded hole-Nut Plate not required

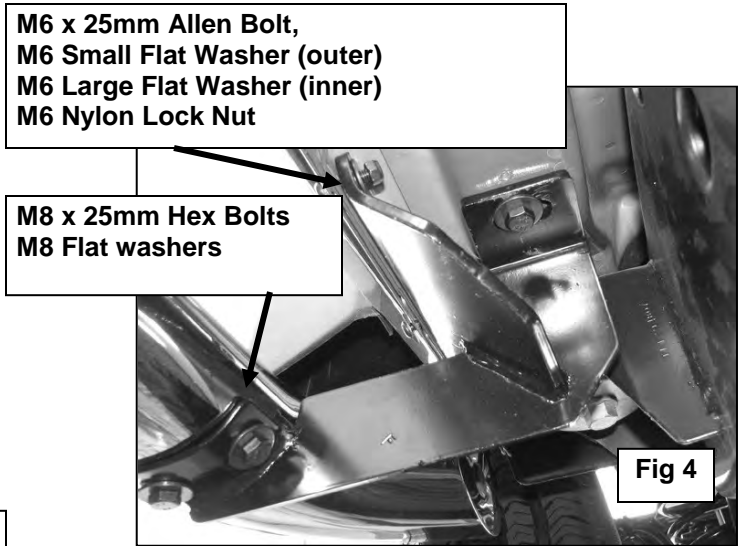


Fig 4

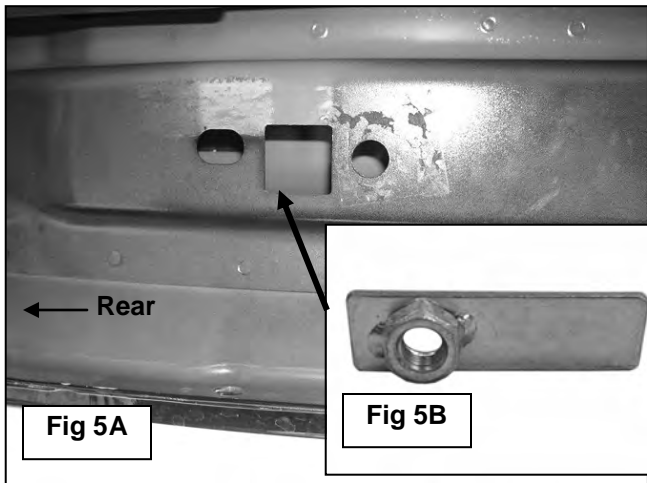
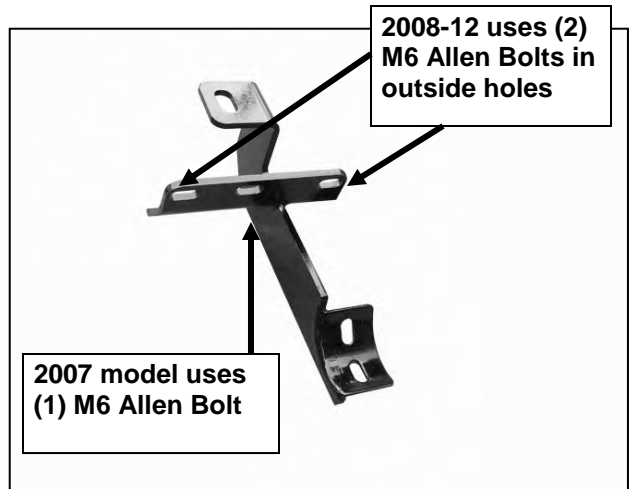


Fig 5A

Fig 5B



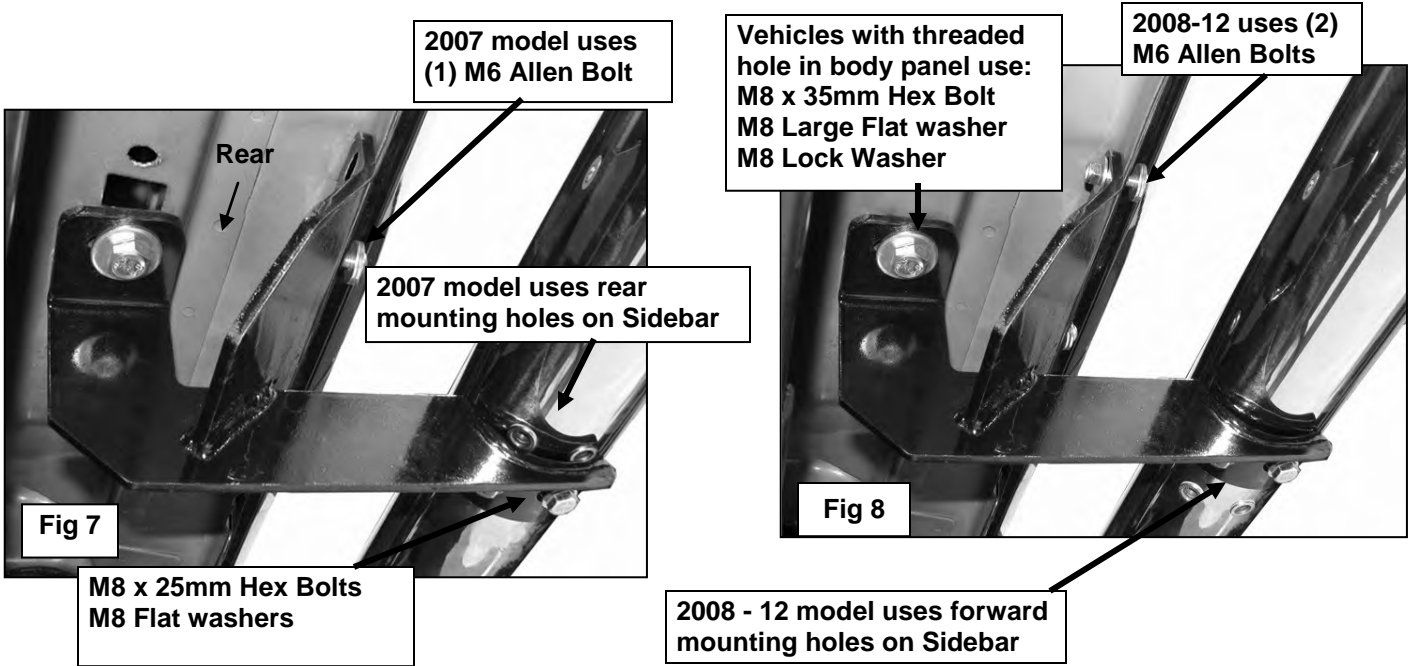
2008-12 uses (2)
M6 Allen Bolts in
outside holes

2007 model uses
(1) M6 Allen Bolt



Westing Automotive Products, Inc.
5200 N. Irwindale Ave. Suite 220
Irwindale, Ca. 91706

Thank You for choosing Westin products
For Additional installation assistance please call
Customer service (800) 793-7846
www.westingautomotive.com



Westing Automotive Products, Inc.
5200 N. Irwindale Ave. Suite 220
Irwindale, Ca. 91706

Thank You for choosing Westin products
For Additional installation assistance please call
Customer service (800) 793-7846
www.westinautomotive.com