



SIGNATURE OF QUALITY

AUTOMOTIVE PRODUCTS, INC.

# INSTRUCTIONS—INSTRUCCIONES—CONSIGNES

APPLICATION: 2009-2014 FORD F150

PART # 45-2500,40-2505

SPORTSMAN GRILLE GUARD

ITEM	QUANTITY	DESCRIPTION	TOOLS NEEDED
1	1	GRILLE GUARD	19mm SOCKET
2,3	2	MOUNTING BRACKETS LOWER, DRIVER (2) & PASSENGER (3)	18mm SOCKET
4,5	2	MOUNTING BRACKETS UPPER, DRIVER (4) & PASSENGER (5)	16mm SOCKET
6	2	M12 DOUBLE NUT PLATE (YELLOW ZINC)	19mm WRENCH
7	4	M12 HEX HEAD BOLT (YELLOW ZINC)	18mm WRENCH
8	4	M12 FLAT WASHER (YELLOW ZINC)	16mm WRENCH
9	4	M12 SPRING LOCK WASHER (YELLOW ZINC)	RATCHET
10	4	M12 SOCKET BUTTON HEAD BOLT	TORQUE WRENCH
11	8	M12 FLAT WASHER	
12	4	M12 LOCK WASHER	
13	4	M12 HEX NUT	
14	2	M10 SOCKET BUTTON HEAD BOLT	
15	4	M10 FLAT WASHER	
16	2	M10 HEX NUT	
17	2	M10 LOCK WASHER	

## ANTI-SEIZE LUBRICANT MUST BE USED ON ALL STAINLESS STEEL FASTENERS TO PREVENT THREAD DAMAGE AND GALLING

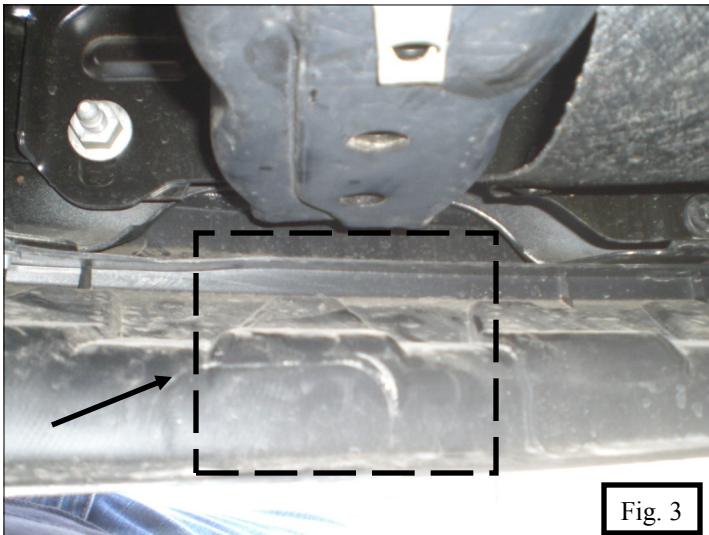
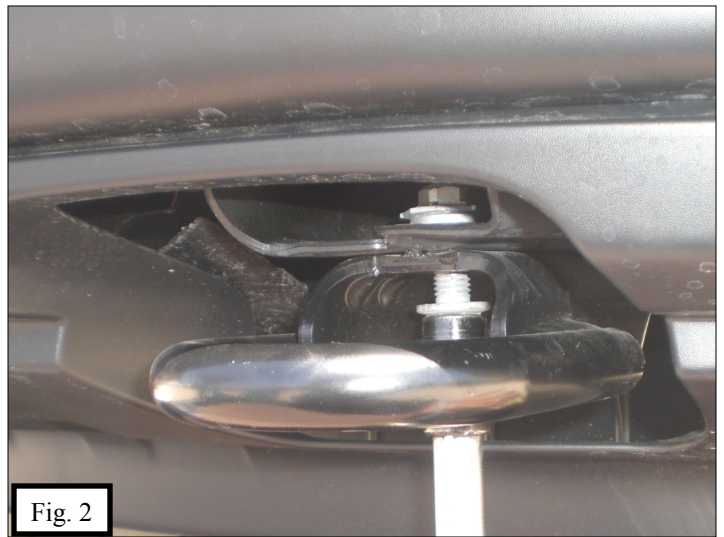
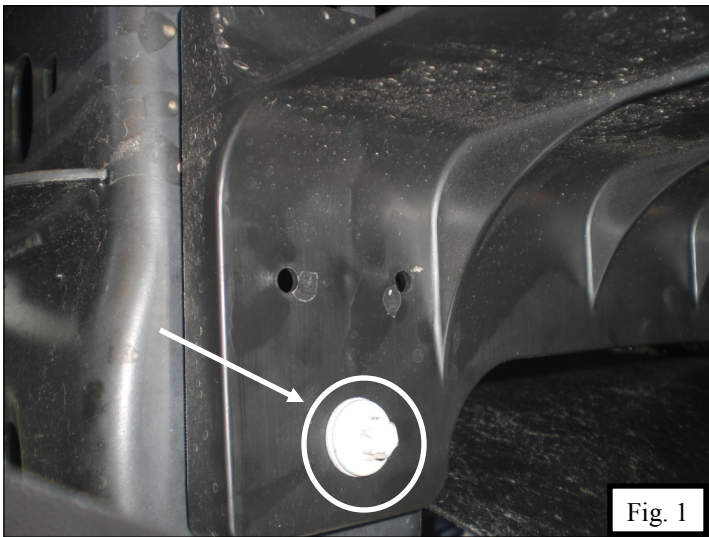
1. Remove contents from box, verify if all parts listed are present and free from damage. Carefully read and understand all instructions before attempting installation.
2. Remove the splash guard located in front of the vehicle by removing two factory bolts. (Fig.1)
3. Remove factory tow hooks from the front of vehicle. *Note: tow hooks cannot be reused with this application.* (Fig.2)
4. The bottom bumper valence must be trimmed to allow the mounting bracket to fit through. Once the valence is trimmed, re-install the valence. (Fig.3)
5. Take one M12 double nut plate (item 6) and insert it into the frame and align the nuts with the existing tow hook mount holes. (Fig.4). Take the drivers side lower mounting bracket (item 2) and place it through hole in the valence and attach it to the previously installed nut plate using (2) M12 hex head bolts (item 7), along with (2) M12 spring lock washers (item 9), and (2) M12 flat washers (item 8). (Fig.5)
6. Remove the factory hardware just to the side of the headlight, shown in (Fig.6) and place the drivers side upper mounting bracket (item 4). Re-use factory hardware to mount the support bracket. *Note: Do not fully tighten at this time.*
7. Repeat 5-6 for Passenger side.
8. With assistance take the grille guard (item 1) and attach it to the lower mounting brackets using (4) M12 socket button head bolts (item 10), (8) M12 flat washers (item 11), (4) M12 lock washers (item 12), and (4) M12 hex nuts (item 13). (Fig.7)  
*Note: Do not fully tighten at this time.*
9. Align the upper mounting brackets with the corresponding holes in the grille guard, attach using (2) M10 socket button head bolts (item 14), (4) M10 flat washers (item 15), (2) M10 Lock washers (item 17) and (2) M10 hex nuts (item 16). Level and adjust grille guard and tighten all hardware. **Torque all M12 hardware to 45-50 ft-lbs & M10 to 30-35 ft-lbs.**

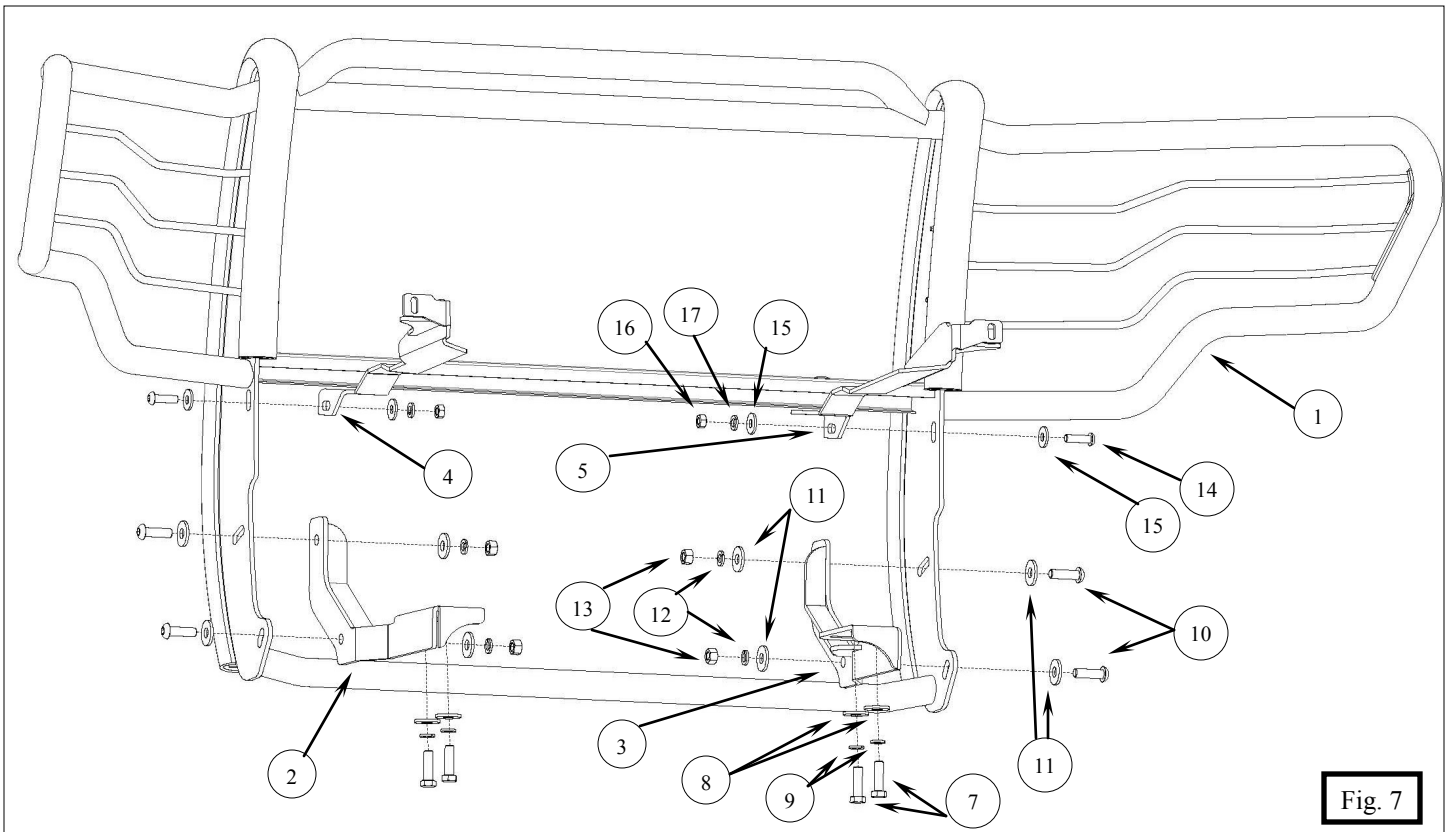


Westin Automotive Products, Inc.  
320 Covina Blvd  
San Dimas, Ca. 91773

Thank You for choosing Westin products  
For Additional installation assistance please call  
Customer service (800) 793-7846

www.westinautomotive.com





**CARE INSTRUCTIONS**

- REGULAR WAXING IS RECOMMENDED. DO NOT USE ANY TYPE OF POLISH OR WAX THAT MAY CONTAIN ABRASIVES
- STAINLESS STEEL PRODUCTS CAN BE CLEANED WITH MILD SOAP AND WATER. STAINLESS STEEL POLISH SHOULD BE USED TO POLISH SMALL SCRATCHES.
- GLOSS BLACK FINISHES SHOULD BE CLEANED WITH MILD SOAP AND WATER



Westin Automotive Products, Inc.  
320 Covina Blvd  
San Dimas, Ca. 91773

**Thank You for choosing Westin products**  
For Additional installation assistance please call  
Customer service (800) 793-7846  
[www.westinautomotive.com](http://www.westinautomotive.com)