



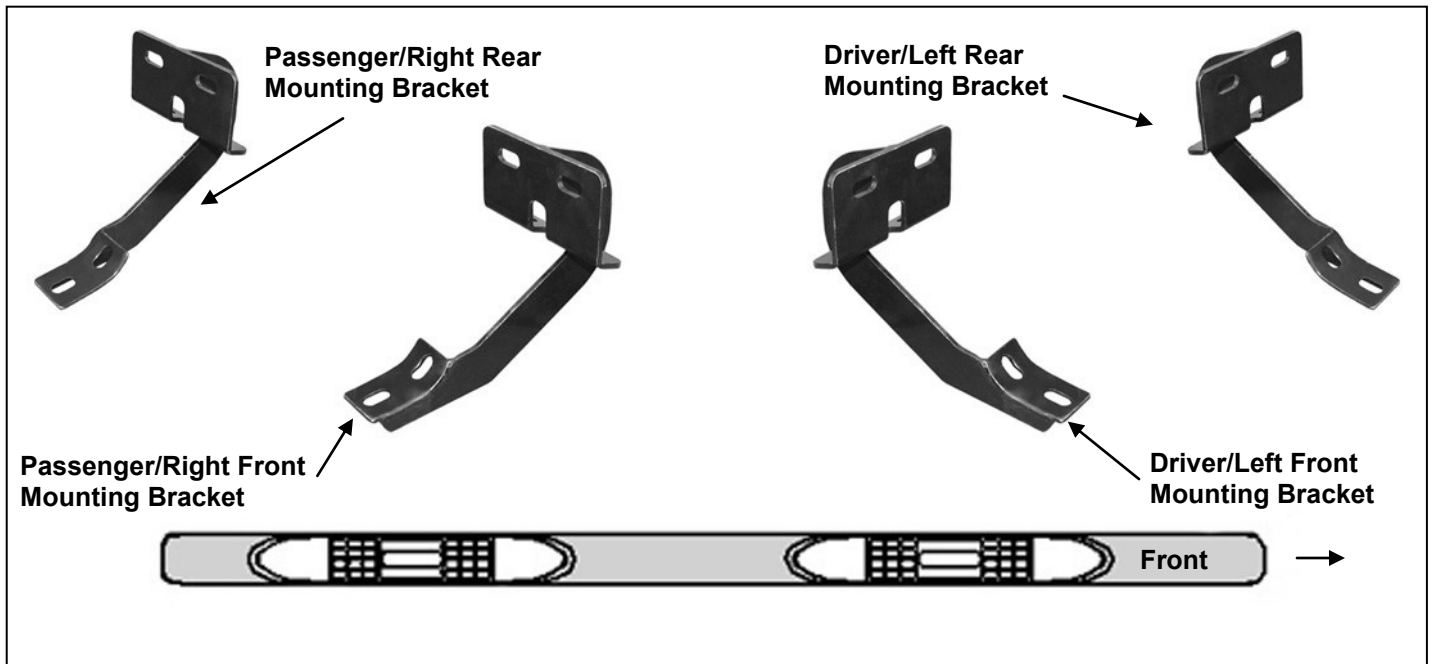
INSTALLATION INSTRUCTIONS

PRO TRAXX 6 OVAL STEP BARS

APPLICATION: 09-14 FORD F-150 SUPER CAB

PART NUMBERS: 21-63510 21-63515

Qty	Description	Qty	Description
1	Driver/Left Side Bar	16	8-1.25mm x 25mm Hex Bolts
1	Passenger/Right Side Bar	8	8mm x 28mm OD x 3mm Flat Washers
2	Driver/Left Front-Passenger/Right Rear Mounting Brackets	24	8mm x 24mm OD x 2mm Flat Washers
2	Passenger/Right Front- Driver/Left Rear Mounting Brackets	24	8mm Lock Washers
8	8mm Deep Clip Nuts	8	8mm Hex Nuts
8	8-1.25mm x 30mm Hex Bolts		



PROCEDURE:

1. REMOVE CONTENTS FROM BOX. VERIFY ALL PARTS ARE PRESENT. READ INSTRUCTIONS CAREFULLY BEFORE STARTING INSTALLATION.
2. Starting on the driver side of the vehicle, locate the (2) holes in the pinch weld to find the factory mounting holes in the inner side panel, **(Figure 1)**. **NOTE:** The inner holes may be covered with sealing tape or insulation. Slide the 8mm Clip Nuts into the opening with the nut towards the inside. Line up the threaded nut on the clip with the round holes, **(Figure 1)**.
3. Partially attach the driver side Mounting Bracket to the Clip Nuts with the included (2) 8mm x 30mm Hex Bolts, (2) 8mm Lock Washers and (2) 8mm x 28mm Large Flat Washers, **(Figure 2)**. Depending on model and year, the brake cable may be run on the inside or outside of the Bracket. Do not tighten hardware at this time. **NOTE:** The Cradle on the Front Mounting Bracket should face to the rear of the vehicle.



Westin Automotive Products, Inc.
320 W. Covina Blvd
San Dimas, Ca. 91773

Thank You for choosing Westin products
For Additional installation assistance please call
Customer service (800) 793-7846
www.westinautomotive.com

4. Align the bottom holes in the front Mounting Bracket with the (2) holes in the pinch weld. Bolt the Bracket to the pinch weld using the included (2) 8mm x 25mm Hex Bolts, (2) 8mm Lock Washers, (4) 8mm STD Flat Washers and (2) 8mm Hex Nuts, **(Figure 2)**. **NOTE:** Insert the bolts up from the bottom of the pinch weld and through the Bracket.
5. Repeat **Steps 2 – 4** for Rear Mounting Bracket installation. **NOTE:** The cradle on the Rear Mounting Bracket should face the front of the vehicle, **(Figures 3 & 4)**. The mounting holes will be the last set towards the back of the cab.
6. Carefully position the Sidebar onto the Mounting Brackets and attach it using the included (4) 8mm x 25mm Hex Bolts, (4) 8mm Lock Washers and (4) 8mm STD Flat Washers, **(Figure 4)**. Do not tighten hardware at this time.
7. Level and adjust the Sidebar properly and tighten all hardware.
8. Repeat **Steps 2 – 7** for passenger Sidebar installation.
9. Do periodic inspections to the installation to make sure that all hardware is secure and tight.

CARE INSTRUCTIONS

- REGULAR WAXING IS RECOMMENDED. DO NOT USE ANY TYPE OF POLISH OR WAX THAT MAY CONTAIN ABRASIVES.
- STAINLESS STEEL PRODUCTS CAN BE CLEANED WITH MILD SOAP AND WATER. STAINLESS STEEL POLISH SHOULD BE USED TO POLISH SMALL SCRATCHES.
- GLOSS BLACK FINISHES SHOULD BE CLEANED WITH MILD SOAP AND WATER.

Driver Side Installation Pictured

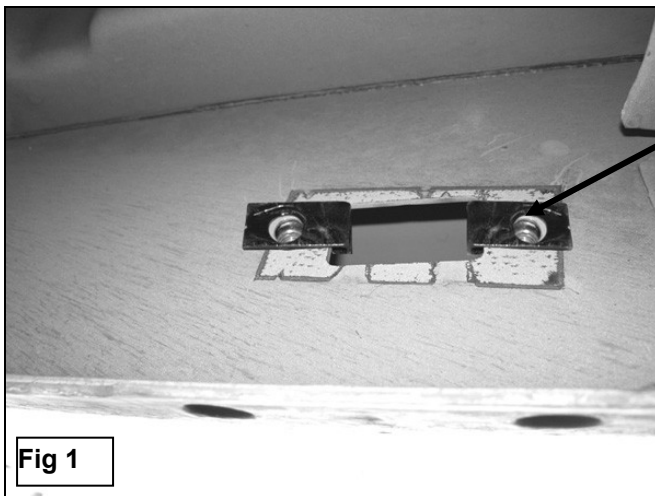
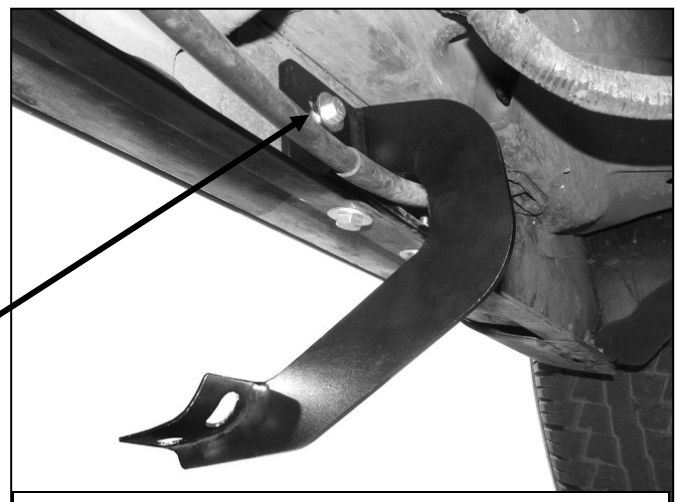


Fig 1

8mm Clip Nuts (hole in body panel shown for example only-location and shape may differ slightly)

8mm x 30mm Hex Bolts
8mm Lock Washers
8mm x 28mm Large Flat Washers



(Fig 2) Driver side-front Mounting Bracket location



Westin Automotive Products, Inc.
320 W. Covina Blvd
San Dimas, Ca. 91773

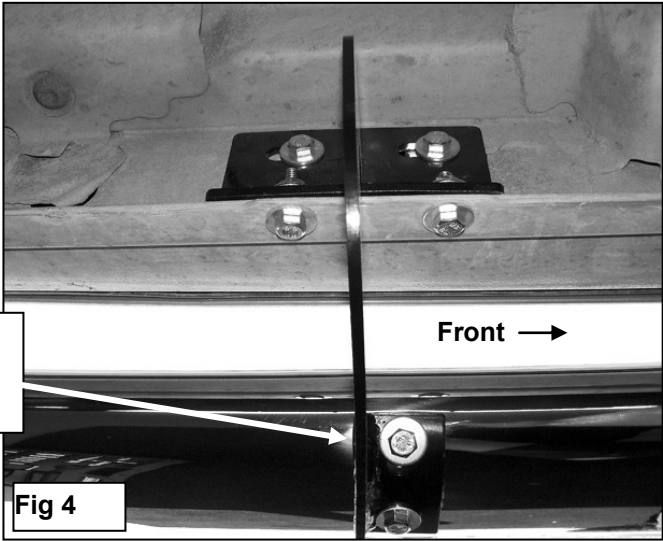
8mm x 30mm Hex Bolts
8mm Lock Washers
8mm x 28mm Large Flat Washers

(2) 8mm x 25mm Hex Bolts
(2) 8mm Lock Washer
(4) 8mm x 24mm STD Flat Washers
(2) 8mm Hex Nuts



(Fig 3) Driver side-rear Mounting Bracket location

(2) 8mm x 25mm Hex Bolts
(2) 8mm Lock Washer
(2) 8mm x 24mm STD Flat Washers



Westin Automotive Products, Inc.
320 W. Covina Blvd
San Dimas, Ca. 91773

Thank You for choosing Westin products
For Additional installation assistance please call
Customer service (800) 793-7846
www.westinautomotive.com