



Installation Instructions
Front Bolt-On/Rugged Look Fender Flares
GMC Sierra 1500,2500,3500 (14-On) FF713

Important: Please read instructions entirely before installing this product.

Hardware Included	QTY
Extrusion	13.5ft
Alcohol Towelette	2

Hardware Included	QTY

Bolt Kit Included (Bolt-On look flare only)	QTY
Nuts	20
Allen Key Bolts	20

Ensure that both left and right hand front Fender Flares suit the profile of the vehicle. Note the areas where the Fender Flares come in contact with the vehicle. NOTE: Before fitting Fender Flares remove any moldings, strips or existing flares from the wheel arch. If there is a body side molding, mark where the molding is to be cut, alternatively the Fender Flare can be cut to go around the molding. Be sure to allow enough room for the extrusion. **No drilling of vehicle is required for Bolt-On Look Fender Flares. This is a non-drill product.**

*For Rugged look flares begin installation at STEP 2.

***PRIOR TO ANY PAINTING & INSTALLATION, PRODUCT SHOULD BE THOROUGHLY INSPECTED FOR ALL COMPONENTS LISTED ABOVE. PRODUCT SHOULD ALSO BE TEST FITTED PRIOR TO ANY PAINTING & INSTALLATION. PLEASE CONTACT EGR IF YOU HAVE ANY FITMENT QUESTIONS AND OR MISSING COMPONENTS.**

PAINTING INSTRUCTIONS – If Fender Flares are being painted; do not install edge extrusion until painting is complete. Prior to painting, clean all surfaces to be painted using clean water and a mild detergent, do not use lacquer thinner or any solvent based products. Wipe completely dry. Best results will be achieved by wiping the areas to be painted with a tack rag just prior to painting. Most automotive paints can be applied directly to the Fender Flares, however some may require a primer (check paint manufacturer specifications). Good adhesion will be achieved without sanding. Select a paint (and primer if necessary) that is suitable for rigid plastics PMMA (Acrylic). If using a paint system that requires baking, do not expose the product to temperatures above 70°C (158°F). Do not fit the extrusion or any of the hardware to the Fender Flares until the paint is completely dry.



STEP 1: Attach the 10 bolts and nuts to each Fender Flare using a 3/16" Allen key and a 10mm wrench/socket (wrench /socket and Allen key not supplied). Ensure inside of Fender Flares where the rubber seal is attached is clean, using the alcohol wipes provided. Wipe away any residue with a dry clean cloth.



STEP 2: Attach the included rubber seal to the Fender Flares. Peel back 2" of the adhesive backing and position on the Fender Flare. Attach the seal to the Fender Flare, peeling back a few inches at a time. Ensure pressure is used to secure rubber seal to Fender Flare edge. Attach rubber seal along all areas the Fender Flare will make contact with the vehicle body.

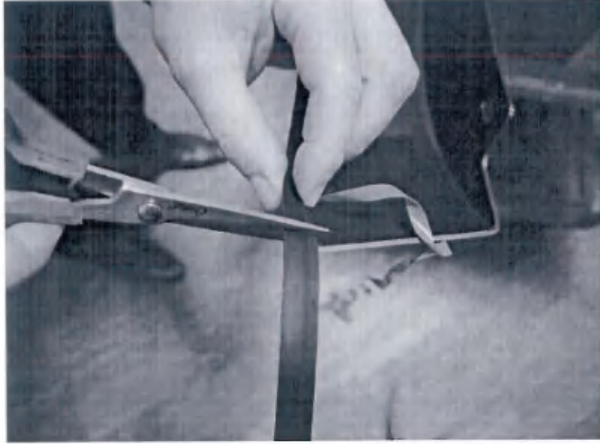
For Technical Support/Warranty Information please call 800-757-7075

EGR Inc., 4000 East Greystone Drive, Ontario, CA 91761



Installation Instructions
Front Bolt-On/Rugged Look Fender Flares
GMC Sierra 1500,2500,3500 (14-On)

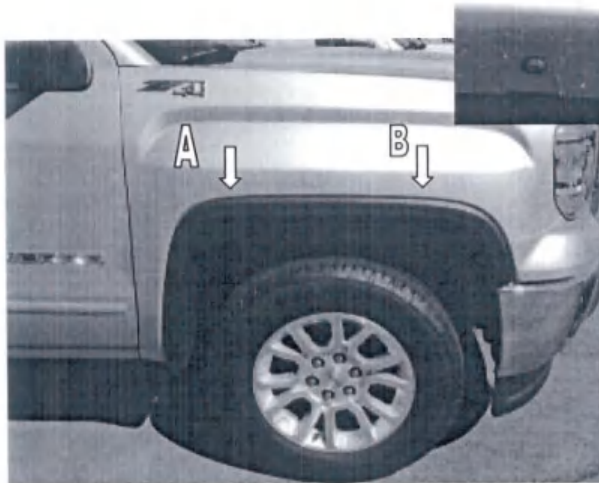
FF713



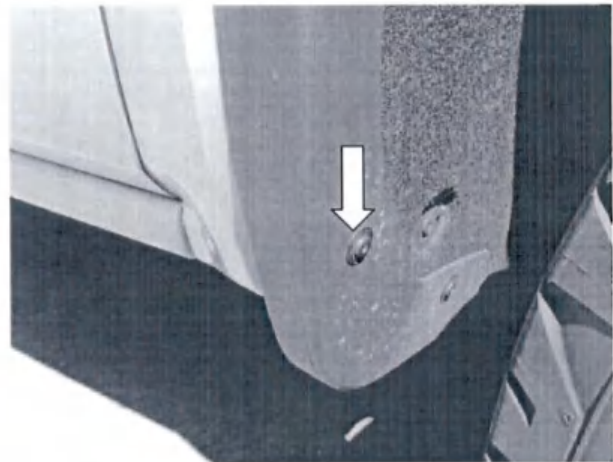
STEP 3: Trim any excess rubber seal and discard.



STEP 4: Clean the body areas where the Fender Flares will make contact. Ensure fenders are dry prior to install. Turning tires outward during install of each Fender Flare will ensure ease of install at bottom fixing points.



STEP 5: Place Fender Flare on the vehicle into the position of best fit. Note where (4) slots in Fender Flare correspond with (4) existing screws in the vehicle wheel arch molding. Remove Fender Flare. Remove the existing vehicle screws in location **A** and **B** using #15 Torx head screwdriver. Maintain screws for re-install.



STEP 6: Using #15 Torx head screwdriver remove bottom rear wheel arch molding screw. Maintain screws for re-install.

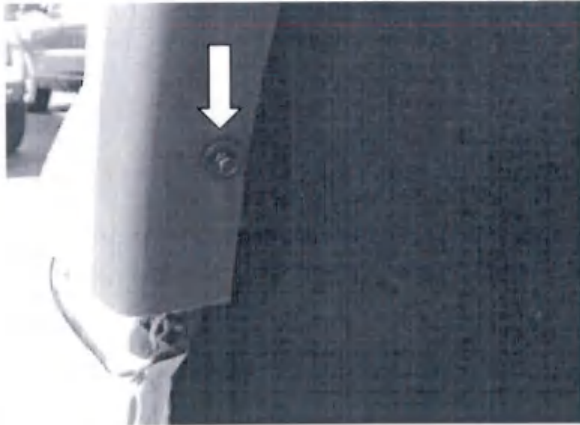
For Technical Support/Warranty Information please call 800-757-7075

EGR Inc., 4000 East Greystone Drive, Ontario, CA 91761



Installation Instructions
Front Bolt-On/Rugged Look Fender Flares
GMC Sierra 1500,2500,3500 (14-On)

FF713



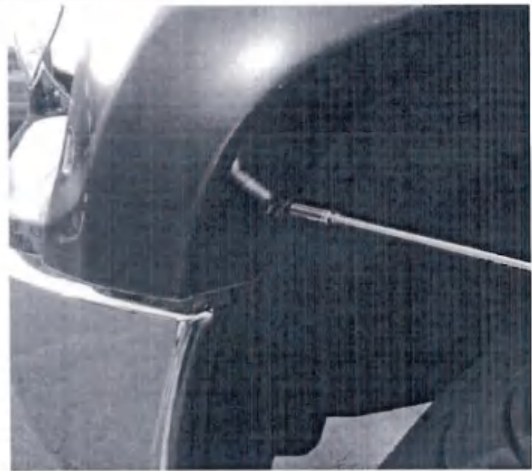
STEP 7: Using a 8mm socket, remove upper front wheel arch molding screw. Maintain screws for re-install.



STEP 8: Place Fender Flare on the vehicle into the position of best fit so the slots in position **A** and **B** (Step: 5) are over the vacant holes in the wheel arch molding. Ensure bottom rear slot in Fender Flare is located over the vacate hole in the bottom rear wheel arch molding. Ensure the slot in the front end of Fender Flare is located over the vacant hole in the upper front wheel arch molding. Apply pressure on Fender Flare towards the vehicle fender when loosely re-installing the previously removed factory screws in position **A** and **B** using a #15 Torx head screwdriver.



STEP 9: Loosely re-install previously removed factory screw through the slot in the Fender Flare at the bottom rear wheel arch molding using #15 Torx head screwdriver.



STEP 10: Loosely re-install factory screw through the remaining slot in the front upper wheel arch molding using a 8mm socket. Ensure Fender Flare is centered and in position of best fit on fender. Tighten all fixing points to ensure a tight and secure fit and that the rubber seal is flush neatly against the vehicle body.

For Technical Support/Warranty Information please call 800-757-7075

EGR Inc., 4000 East Greystone Drive, Ontario, CA 91761



Installation Instructions
Rear Bolt-On/Rugged Look Fender Flares
GMC Sierra 1500,2500,3500 (14-On)

FF714

Important: Please read instructions entirely before installing this product.

Hardware Included	QTY
Extrusion	17ft
U CLIP .6mm	6
Alcohol Towelette	2

Hardware Included	QTY

Bolt Kit Included (Bolt-On look flare only)	QTY
Nuts	22
Allen Key Bolts	22

Ensure that both left and right hand rear Fender Flares suit the profile of the vehicle. Note the areas where the Fender Flares come in contact with the vehicle. NOTE: Before fitting Fender Flares remove any moldings, strips or existing flares from the wheel arch. If there is a body side molding, mark where the molding is to be cut, alternatively the Fender Flare can be cut to go around the molding. Be sure to allow enough room for the extrusion. **No drilling of vehicle is required for Bolt-On Look Fender Flares. This is a non-drill product.**

***For Rugged look flares begin installation at STEP 2.**

***PRIOR TO ANY PAINTING & INSTALLATION, PRODUCT SHOULD BE THOROUGHLY INSPECTED FOR ALL COMPONENTS LISTED ABOVE. PRODUCT SHOULD ALSO BE TEST FITTED PRIOR TO ANY PAINTING & INSTALLATION. PLEASE CONTACT EGR IF YOU HAVE ANY FITMENT QUESTIONS AND OR MISSING COMPONENTS.**

PAINTING INSTRUCTIONS – If Fender Flares are being painted; do not install edge extrusion until painting is complete. Prior to painting, clean all surfaces to be painted using clean water and a mild detergent, do not use lacquer thinner or any solvent based products. Wipe completely dry. Best results will be achieved by wiping the areas to be painted with a tack rag just prior to painting. Most automotive paints can be applied directly to the Fender Flares, however some may require a primer (check paint manufacturer specifications). Good adhesion will be achieved without sanding. Select a paint (and primer if necessary) that is suitable for rigid plastics PMMA (Acrylic). If using a paint system that requires baking, do not expose the product to temperatures above 70°C (158°F). Do not fit the extrusion or any of the hardware to the Fender Flares until the paint is completely dry.



STEP 1: Attach the 11 bolts and nuts to each Fender Flare using a 3/16" Allen key and a 10mm wrench/socket (wrench /socket and Allen key not supplied). Ensure inside of Fender Flares where the rubber seal is attached is clean, using the alcohol wipes provided. Wipe away any residue with a dry clean cloth.



STEP 2: Attach the included rubber seal to the Fender Flares by peeling back 2" of the adhesive backing and position on the Fender Flare. Attach the remaining seal to the Fender Flare, peeling back a few inches at a time and ensuring pressure is used to secure the rubber seal. Attach rubber seal along the top leading edge of the Fender Flare that makes contact with the vehicle body. Trim excess rubber seal and retain for next install step.

For Technical Support/Warranty Information please call 800-757-7075

EGR Inc., 4000 East Greystone Drive, Ontario, CA 91761



Installation Instructions
Rear Bolt-On/Rugged Look Fender Flares
GMC Sierra 1500,2500,3500 (14-On)

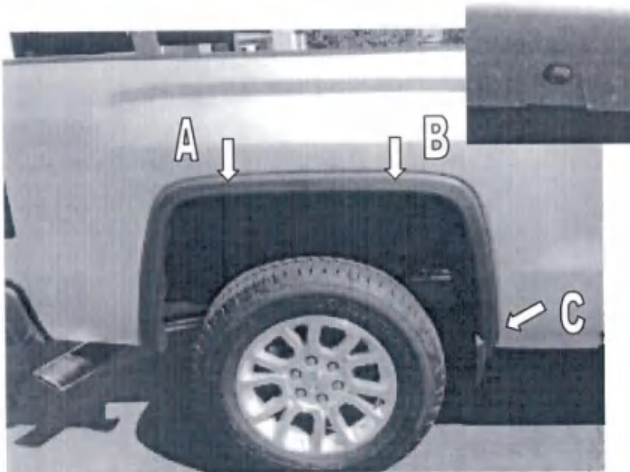
FF714



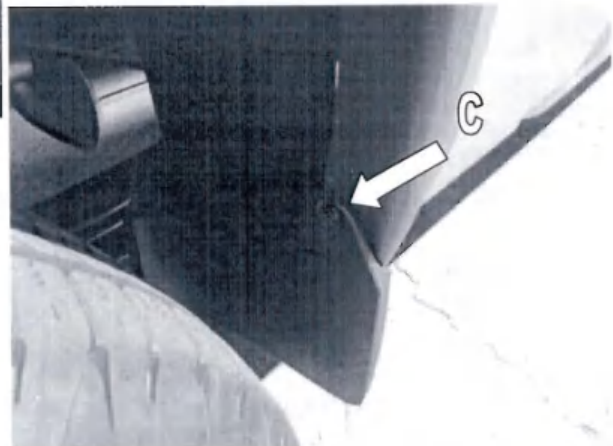
STEP 3: Attach rubber seal to the bottom front corner of each Fender Flare by peeling back 1" of the adhesive backing and position on the Fender Flare. Ensure pressure is used to secure rubber seal. Trim excess rubber seal and discard, once completed for both sides.



STEP 4: Clean the body area where the Fender Flares will make contact. Ensure fenders are dry prior to install.



STEP 5: Place Fender Flare on the vehicle into the position of best fit. Note where the slots in Fender Flare at positions **A** and **B** align with the existing screws in the vehicle wheel arch molding. Also note where the slot in the Fender Flare aligns with the front mud flap deflector, position **C**. Remove Fender Flare. Remove the existing vehicle screws in location **A** and **B** using #15 Torx head screwdriver. Maintain screws for re-install.



STEP 6: Using #15 Torx head screwdriver, remove upper screw as previously noted in position **C** from the factory mud flap deflector. Maintain screws for re-install.

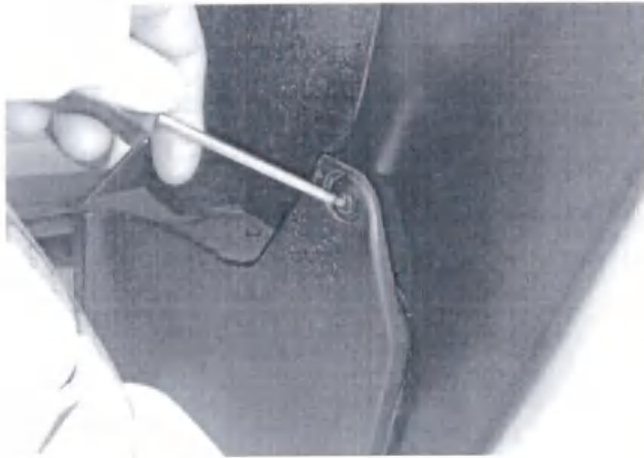
For Technical Support/Warranty Information please call 800-757-7075

EGR Inc., 4000 East Greystone Drive, Ontario, CA 91761

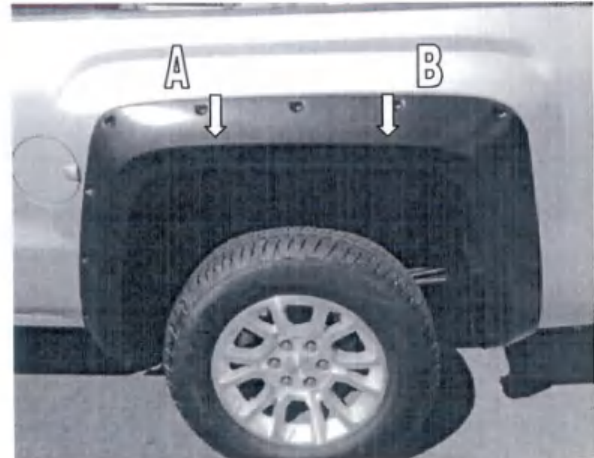


Installation Instructions
Rear Bolt-On/Rugged Look Fender Flares
GMC Sierra 1500,2500,3500 (14-On)

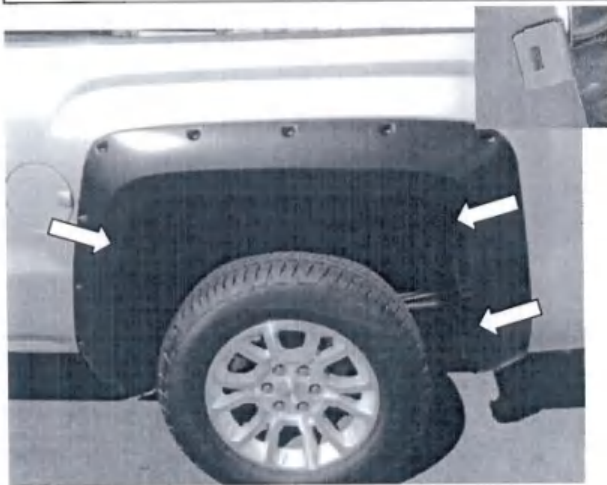
FF714



STEP 7: Place Fender Flare on the vehicle into the position of best fit, slide the bottom front end of Fender Flare between the existing mud flap deflector and wheel arch molding so that the slot in the Fender Flare is under the vacant hole in the mud flap. Using #15 Torx head screwdriver loosely re-install the previously removed screw. Ensure the installed rubber seal from STEP 3 is resting firmly on the mud flap deflector.



STEP 8: To secure the Fender Flare to vehicle body, ensure Fender Flare is in position of best fit and the slots in position **A** and **B** (Step: 5) are over the vacant holes in the wheel arch molding. Apply pressure on Fender Flare towards the vehicle fender when re-installing the previously removed factory screws in position **A** and **B** using a #15 Torx head screwdriver.



STEP 9: Install the provided metal clips at the (3) remaining slot locations in the Fender Flare. Ensure that positive pressure is applied on the Fender Flare to the vehicle fender when installing clips. Slide the clips over the Fender Flare and the inner lip of the wheel arch molding ensuring that the barb in the clip locates in the slot of the Fender Flare. Using #15 Torx head screwdriver tighten the screw in the factory mud flap deflector (STEP:7). Ensure all fixing points are tight and secure and that the rubber seal is flush neatly against the vehicle body and mud flap deflector.

For Technical Support/Warranty Information please call 800-757-7075

EGR Inc., 4000 East Greystone Drive, Ontario, CA 91761