



# GATORBACK MUDFLAPS

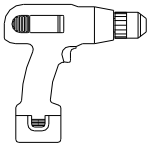
## 2019 Jeep Cherokee Trailhawk Mud Flap Set, Front Mounting Diagram & Instructions Kit# GCR61F

### IMPORTANT:

Manufacturer is not responsible for negligent use of vehicle with mud flaps installed, including over-tightening of screws and bolts causing damage to vehicle or mud flaps.



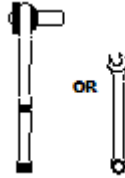
### TOOLS REQUIRED-



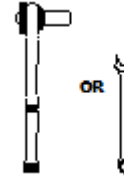
Electric or Rechargeable  
Drill



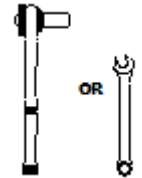
1/4" Drill  
Bit



5/16" Open Wrench or  
Socket Wrench



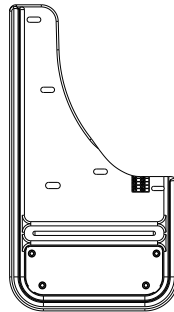
3/8" Open Wrench or  
Socket Wrench



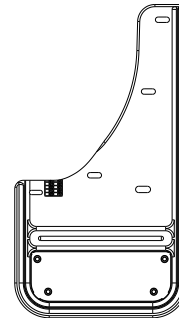
7/16" Open Wrench or  
Socket Wrench

### FLAPS

(1) Flap Assembly,  
Front, DS

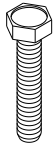


(1) Flap Assembly  
Front, PS



### PARTS BAG # 767605

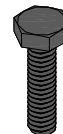
a) (2) Screw, Mach.  
18-8SS, 10-24x1, Hex Hd  
Part # 012022



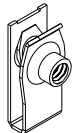
b) (6) Capscrew, SS  
1/4"-20 x 3/8" Blk Ox  
Part # 014069



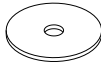
c) (2) Capscrew, SS  
1/4"-20 x 1" Blk Ox  
Part #014073



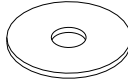
d) (4) Spring Nut  
1/4"-20, 27/38" Reach  
Part #028006



e) (4) Washer, Flat  
0.203" x 0.781", SS  
Part #018018



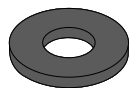
f) (2) Washer, Flat  
0.281" x 1", SS  
Part #018028



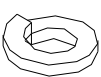
g) (8) Washer, Flat  
0.281" x 1" SS, Blk Ox  
Part #018069



h) (2) Washer, Flat  
0.437" x 1", Nylon  
Part #054076



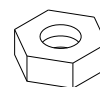
i) (2) Washer, Lock  
1/4" Helicoil, SS  
Part #024000



j) (2) Washer, Lock  
18-8, SS, 10  
Part #024001



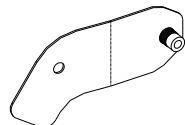
k) (2) Nut, Hex  
1/4"-20, SS  
Part #025000



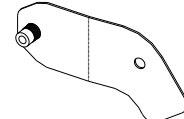
l) (2) Nut, Hex  
#10-24, SS  
Part #025003



m) (1) Front Bracket  
Driver's Side  
Part #767609



n) (1) Front Bracket  
Passenger's Side  
Part #767610

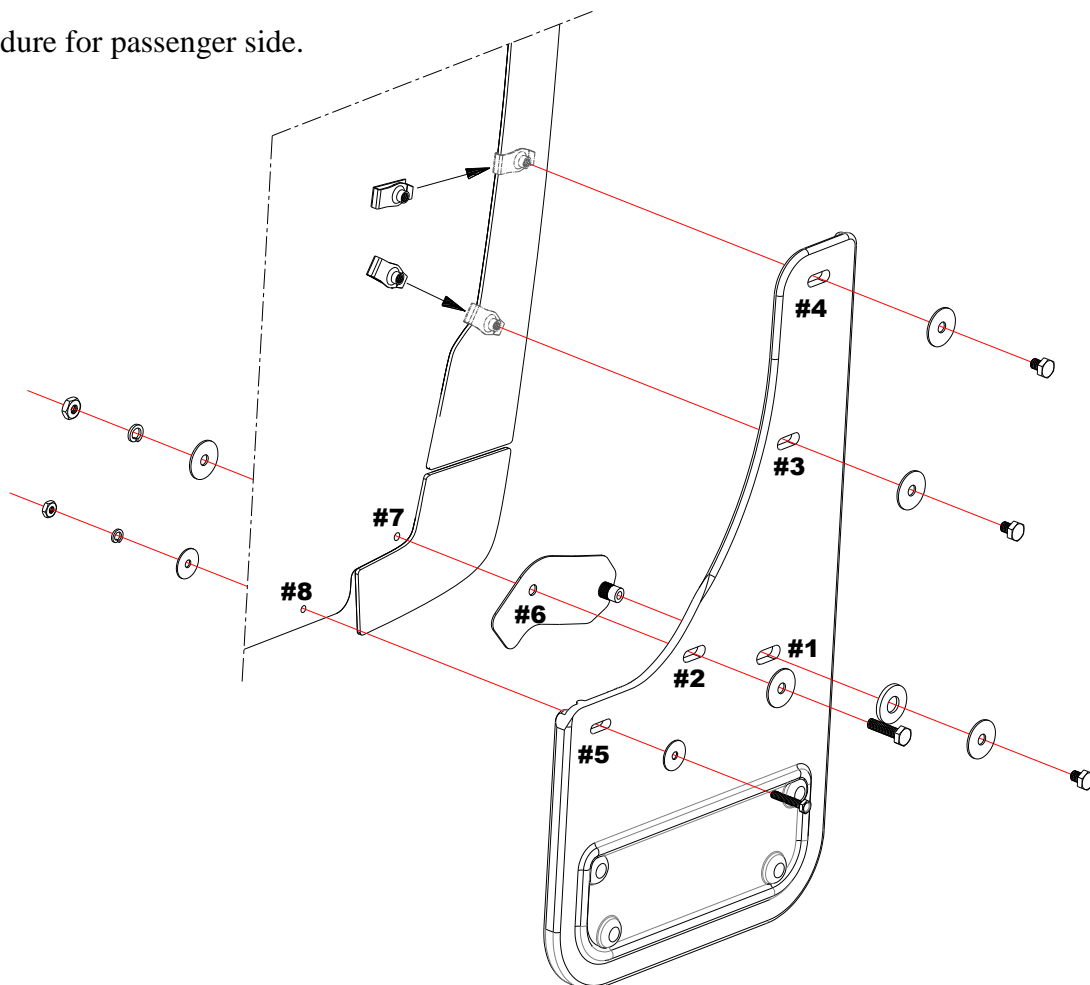


### INSTALLATION (For ease of installation it is suggested that the wheel be removed)

1. Before you install your Mud Flap Set, see the diagram and parts list for all necessary parts. Start on the driver's side.
2. Install supplied bracket onto the mud flap through hole #1 and secure it with a nylon washer (054076), black washer (018069) and capscrew (014069).



3. Remove the lower factory screw from hole #7 as well as the corresponding factory push pin from the inside of the fender.
4. Install a capscrew (014073) through a black washer (018069) into mud flap hole #2 and bracket hole #6 and install on factory hole #7. Loosely secure using a flat washer (018028), lock washer (024000) and hex nut (025000)
5. Temporarily square the flap using a square or other levelling tool.
6. Mark the fender through mud flap holes #3 & #4.
7. Place spring nuts over marked spots on the fender. \*Note\* Spring nut marked through mud flap hole #3 will have to be installed at an angle as shown in the diagram.
8. Fit the flange of the spring nuts through the mud flap holes #3 & #4. Secure mud flap to spring nuts using a capscrew (014069) and a flat washer (018069)
9. Square the flap using a square or other levelling tool.
10. Drill a ¼" hole through mud flap hole #5 into the plastic liner to create hole #8
11. Install mud flap hole #5 to liner through hole #8 using a machine screw (012022) and flat washer (018018) and secure using a flat washer (018018), lock washer (024001) and hex nut (025003).
12. Tighten all fasteners.
13. Repeat procedure for passenger side.



Please check out our YouTube channel to see an install video for this application.

