

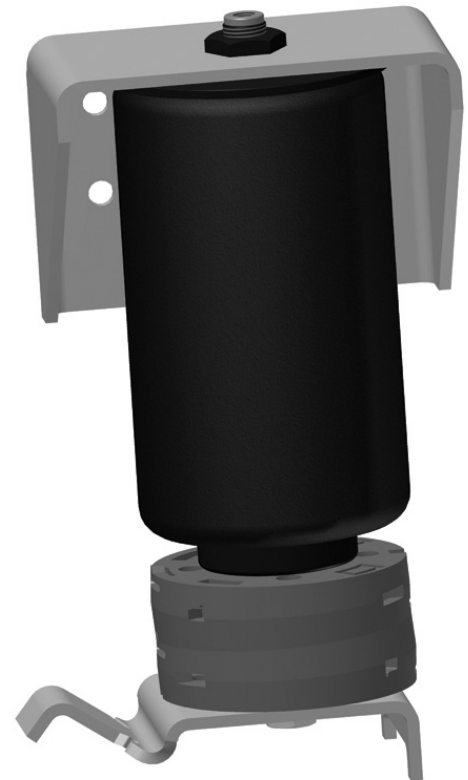
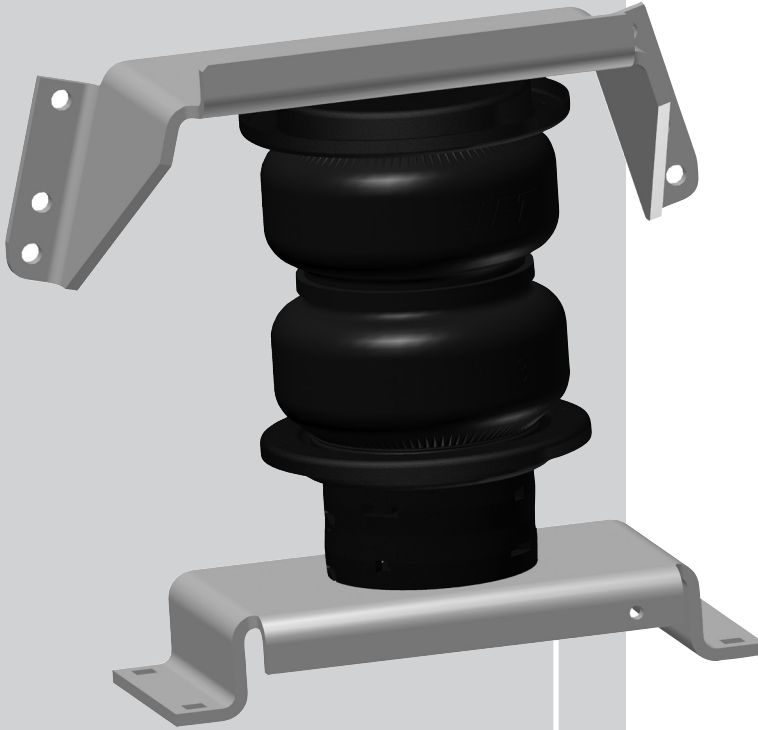
# **Lock-N-Lift**

by AIR LIFT<sup>®</sup>

## **Kit 52130, 52140, 52150**

### ***Universal Air Spring Spacer System***

LoadLifter5000 Applications



RideControl Applications



## **INSTALLATION GUIDE**

For maximum effectiveness and safety, please read these instructions completely before proceeding with installation.

*Failure to read these instructions can result in an incorrect installation.*



# TABLE OF CONTENTS

<b>Introduction . . . . .</b>	<b>2</b>
Important Safety Notice . . . . .	2
Notation Explanation . . . . .	2
 <b>Installation Diagram for RideControl 2-inch Lift System . . . .</b>	<b>3</b>
Hardware List . . . . .	3
Tools List . . . . .	3
 <b>Installation Diagram for LoadLifter 5000 2-inch Lift System . . . .</b>	<b>4</b>
Hardware List . . . . .	4
Tools List . . . . .	4
 <b>Installing the RideControl Lock-N-Lift System . . . . .</b>	<b>5</b>
Preparing the Air Spring for Lift Block Installation . . . . .	5
Installing the Lift Blocks to Vehicles with RideControl Air Spring Kits . . . . .	7
If Disassembly is Required . . . . .	9
Adding Additional Lift Blocks . . . . .	10
 <b>Installing the LoadLifter 5000 Lock-N-Lift System. . . . .</b>	<b>4</b>
Preparing the Air Spring for Lift Block Installation . . . . .	5
Installing the Lift Blocks . . . . .	5
If Disassembly is Required . . . . .	9
Adding Additional Lift Blocks . . . . .	10
 <b>Limited Warranty and Return Policy . . . . .</b>	<b>13</b>
 <b>Replacement Part Information . . . . .</b>	<b>13</b>
 <b>Contact Information . . . . .</b>	<b>13</b>

# Introduction

The purpose of this publication is to assist with the installation, maintenance and troubleshooting of the Lock-N-Lift universal air spring spacer system.

It is important to read and understand the entire installation guide before beginning installation or performing any maintenance, service or repair. The information here includes a hardware list, tool list, step-by-step installation information, maintenance tips, safety information and a troubleshooting guide.

Air Lift Company reserves the right to make changes and improvements to its products and publications at any time. Contact Air Lift Company at **(800) 248-0892** or online at **[www.airliftcompany.com](http://www.airliftcompany.com)** for the latest version of this manual.

## IMPORTANT SAFETY NOTICE

The installation of this kit does not alter the gross vehicle weight rating (GVWR) or payload of the vehicle. Check your vehicle's owner's manual and do not exceed the maximum load listed for your vehicle.

**Gross vehicle weight rating:** The maximum allowable weight of the fully loaded vehicle (including passengers and cargo). This number — along with other weight limits, as well as tire, rim size and inflation pressure data — is shown on the vehicle's Safety Compliance Certification Label.

**Payload:** The combined, maximum allowable weight of cargo and passengers that the truck is designed to carry. Payload is GVWR minus the base curb weight.

## NOTATION EXPLANATION

Hazard notations appear in various locations in this publication. Information which is highlighted by one of these notations must be observed to help minimize risk of personal injury or possible improper installation which may render the vehicle unsafe. Notes are used to help emphasize areas of procedural importance and provide helpful suggestions. The following definitions explain the use of these notations as they appear throughout this guide.



### DANGER

INDICATES IMMEDIATE HAZARDS WHICH WILL RESULT IN SEVERE PERSONAL INJURY OR DEATH.



### WARNING

INDICATES HAZARDS OR UNSAFE PRACTICES WHICH COULD RESULT IN SEVERE PERSONAL INJURY OR DEATH.



### CAUTION

INDICATES HAZARDS OR UNSAFE PRACTICES WHICH COULD RESULT IN DAMAGE TO THE MACHINE OR MINOR PERSONAL INJURY.

## NOTE

*Indicates a procedure, practice or hint which is important to highlight.*

# Installation Diagram for RideControl 2-inch Lift System

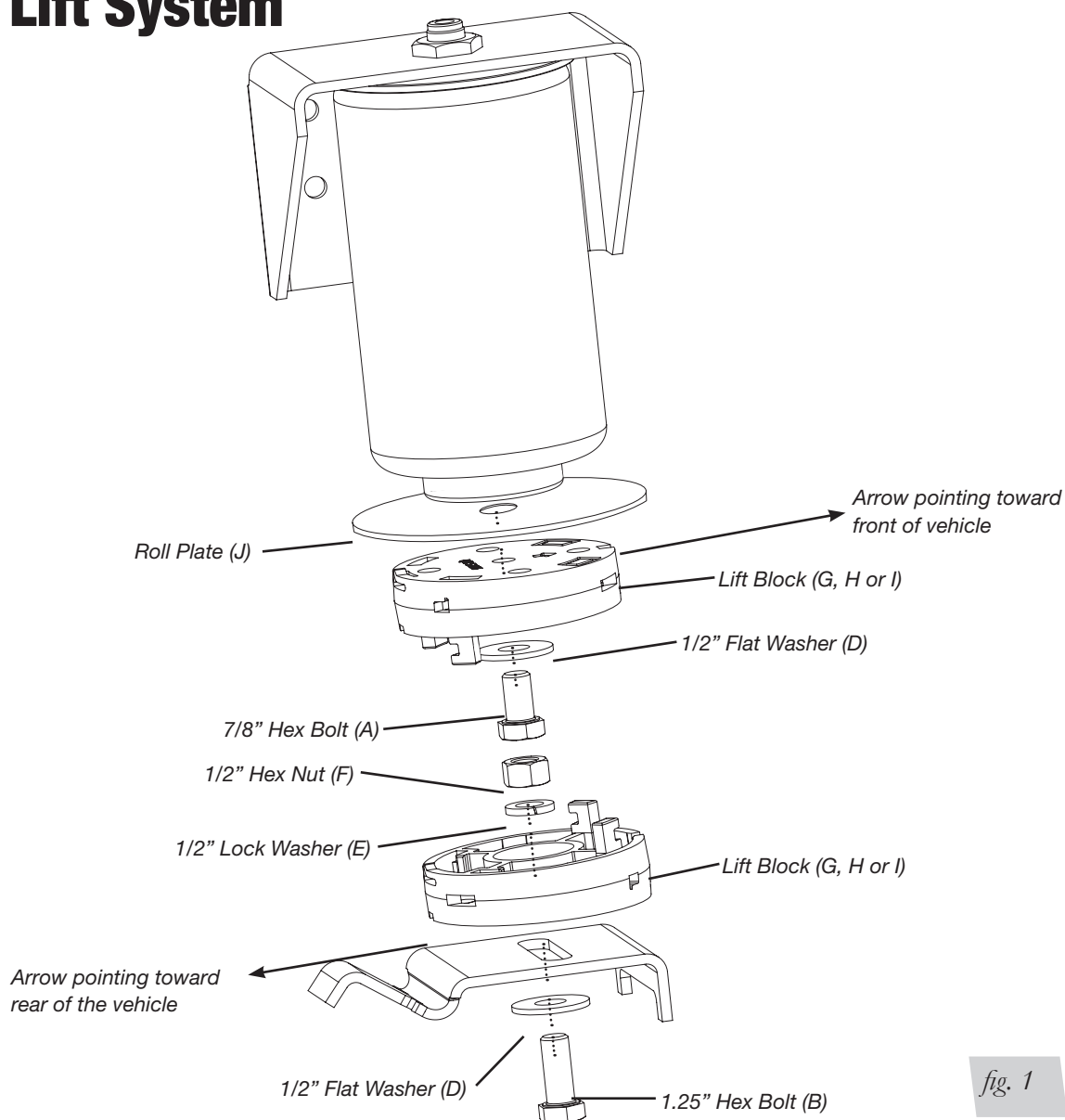


fig. 1

## HARDWARE LIST

Item	Part #	Description.....Qty
A	17124	1/2"-13 x 7/8" Hex Bolt ..... 2
B	17412	1/2"-13 x 1.25" Hex Bolt..... 2
C	17413	1/2"-13 x 1.25" Flat Head Bolt (not shown).. 2
D	18414	1/2" Flat Washer ..... 4
E	18429	1/2" Lock Washer ..... 2
F	18431	1/2"-13 Hex Nut..... 2
G	52006	1" Lift Block (52130) ..... 4
H	52006	1" Lift Block (52140) ..... 8
I	52006	1" Lift Block (52150) ..... 12
J	10946	Roll Plate..... 2

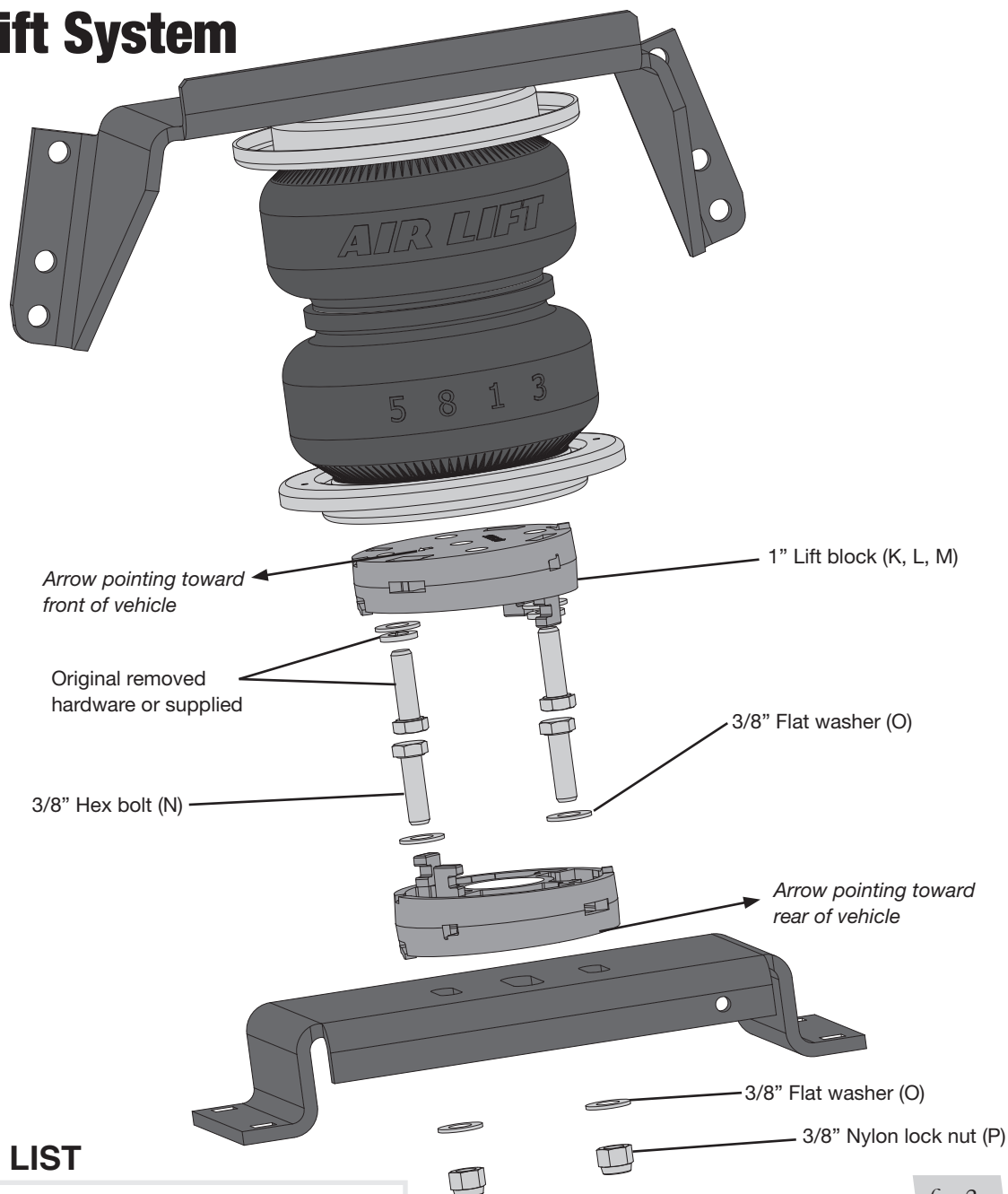
## TOOLS LIST

Description.....Qty
3/4" & 9/16" Socket..... 1
3/4" & 9/16" Wrench..... 1
3/8" Drive ratchet ..... 1
5/16", 7/64" or 3mm Hex wrench..... 2



Missing or damaged parts? Call Air Lift customer service at (800) 248-0892 for a replacement part.

# Installation Diagram for LoadLifter 5000 2-inch Lift System



## HARDWARE LIST

Item	Part #	Description.....	Qty
K	52006	1" Lift block (52130).....	4
L	52006	1" Lift Block (52140) .....	8
M	52006	1" Lift Block (52150) .....	12
N	17188	3/8" Hex bolt.....	4
O	18444	3/8" Flat washer.....	8
P	18435	3/8" Nylon lock nut .....	4
Q	17404	3/8" Flat head bolt .....	4
R	17203	3/8" Hex bolt (fine thread).....	4
S	18427	3/8" Lock washer.....	4

## TOOLS LIST

Description.....	Qty
3/4" & 9/16" Socket.....	1
3/4" & 9/16" Wrench.....	1
3/8" Drive Ratchet .....	1
5/16", 7/64" or 3mm Hex Wrench .....	2

*fig. 2*
**STOP!**

Missing or damaged parts? Call Air Lift customer service at (800) 248-0892 for a replacement part.

# Installing the Lock-N-Lift System

Refer to your air spring installation manual for installing the air spring kit. Your air spring kit may vary from the kit shown.

## NOTE

*Do not assemble the lift blocks before indicated in the instructions.*

## PREPARING THE AIR SPRING FOR LIFT BLOCK INSTALLATION

1. Release any air from the air spring already installed.
2. Remove the fasteners that attach the air spring to the lower bracket.
3. Remove the lower bracket from the vehicle.

## INSTALLING THE LIFT BLOCKS TO VEHICLES WITH LOADLIFTER 5000 AIR SPRING KITS

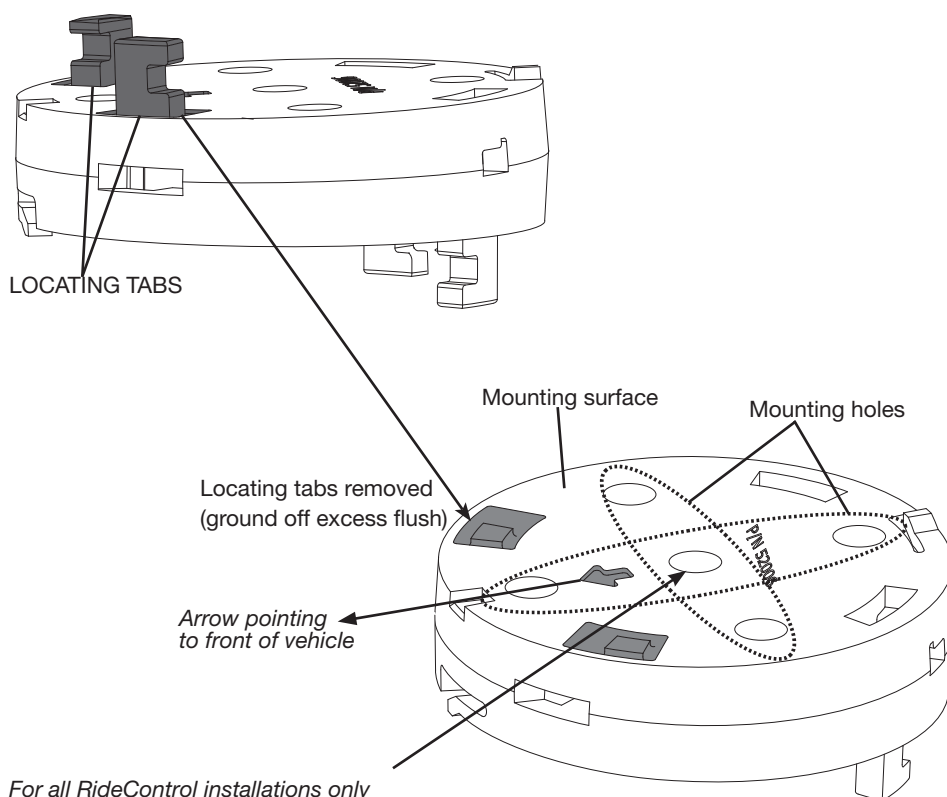
1. For a two block system, remove the locating tabs on the arrow side of each lift block. Remove the tabs with a hammer. The tabs must be removed flush or below the mounting surface (fig. 3).

## NOTE

*It may be necessary to use a grinder to remove material after breaking tabs off with a hammer.*

## NOTE

*It is only necessary to remove the tabs on the arrow side of two blocks for each air spring assembly.*



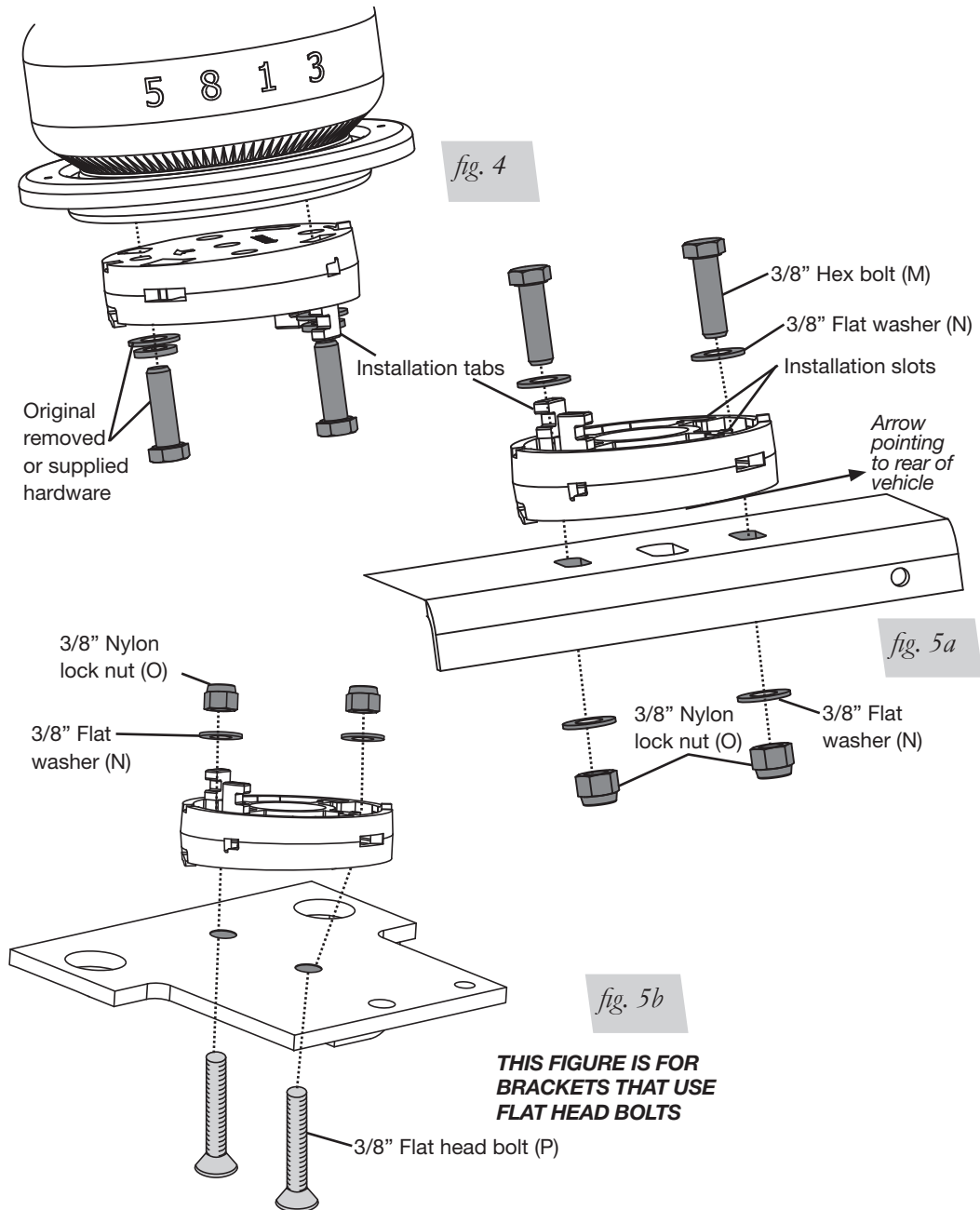
*For all RideControl installations only  
(NOT LoadLifter):  
Drill center hole out to 1/2" on both blocks.*

*fig. 3*

2. Fasten a lift block with the tabs removed to the bottom of the air spring (fig. 4). Use the mounting holes that allow the arrow to face toward the **front** of the vehicle (fig. 3).
3. Install another lift block with the tabs removed to the lower bracket. Orientate the lift block on the lower bracket so that the installation tabs align with the installation slots when the lower bracket is located in its original mounting location (fig. 5a). Fasten the lift block to the lower bracket using the 3/8" hardware included (the arrow on the top surface of the lower spacer will face toward the **rear** of the vehicle).

**NOTE**

*For lower brackets that had or require flat head bolts, use the 3/8" flat head bolts (P) provided (fig. 5b) to attach the lift block to the lower bracket.*





## INSTALLING THE LIFT BLOCKS TO VEHICLES WITH RIDECONTROL AIR SPRING KITS

1. For a two block system, remove the locating tabs on the arrow side of each lift block. Remove the tabs with a hammer. The tabs must be removed flush or below the mounting surface (fig. 3). Drill the center mounting hole out to 1/2".

---

**NOTE**

*It may be necessary to use a grinder to remove material after breaking tabs off with a hammer.*

---

**NOTE**

*It is only necessary to remove the tabs on the arrow side of two blocks for each air spring assembly.*

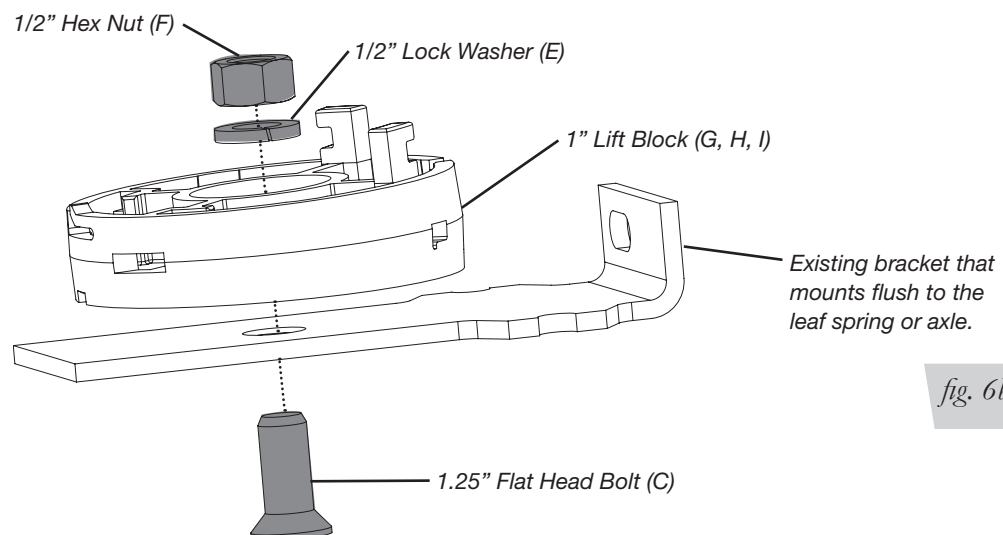
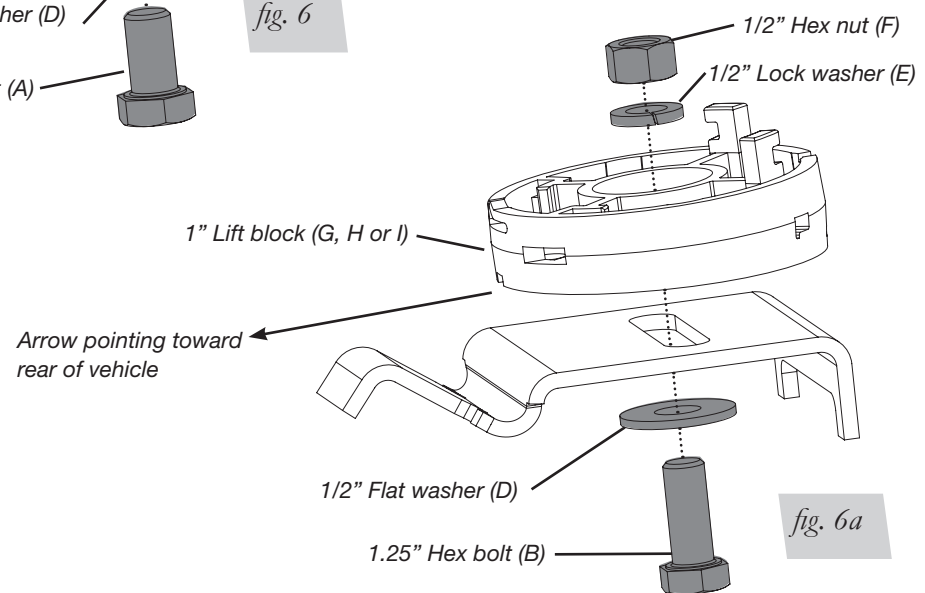
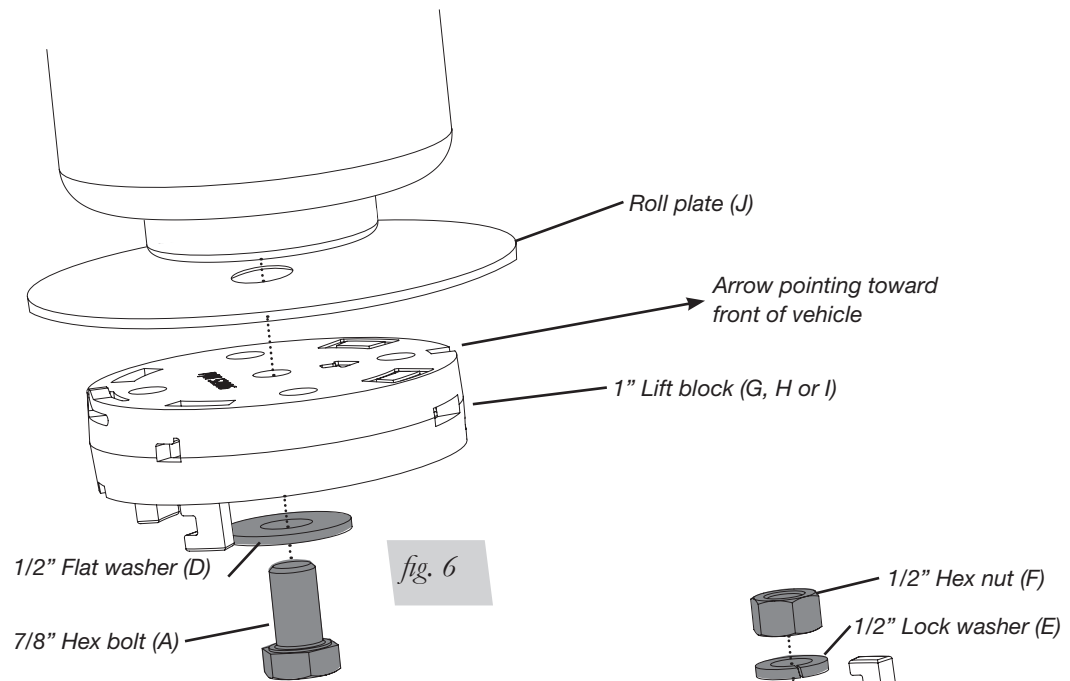
2. Fasten a roll plate and lift block with the tabs removed to the bottom of the air spring (fig. 6). Position the arrow to face toward the **front** of the vehicle (fig. 3).
3. Install another lift block with the tabs removed to the lower bracket. Orientate the lift block on the lower bracket so that the installation tabs align with the installation slots when the lower bracket is located in its original mounting location (fig. 6a). Fasten the lift block to the lower bracket using the 1/2" hardware included (the arrow on the top surface of the lower spacer will face toward the **rear** of the vehicle).

---

**NOTE**

*For lower brackets that had or require flat head bolts, use the 1/2" Flat-head bolt (C) provided (fig. 6b) to attach the lift block to the lower bracket.*

*(see diagrams on next page)*



\* This figure for brackets that use flat head bolts.

4. Before attaching the lower bracket lift block assembly to the vehicle, insert the installation tabs into the installation slots and rotate the lower lift block assembly clockwise (fig. 7).
5. When the blocks are fully seated, the retaining snaps will lock into the retaining slots (fig. 8). CHECK BOTH SIDES OF THE LIFT BLOCK TO BE SURE THE RETAINING SNAPS ARE LOCKED IN PLACE.

## CAUTION

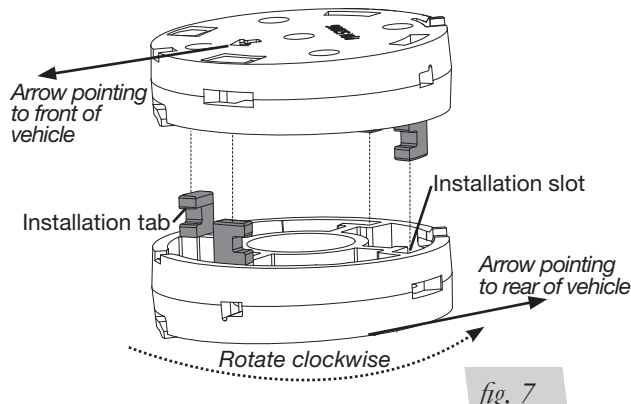


fig. 7

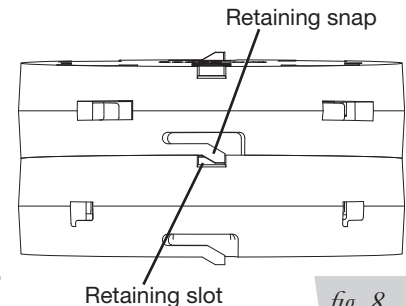


fig. 8

6. Attach the lower bracket to the suspension in its original location. See the air spring kit installation manual if required.
7. Repeat steps 2 through 6 on the other side of the vehicle.

## CAUTION

LIFT BLOCKS CAN NOT SERVE AS THE SUSPENSION LIMITER. A LIMITING STRAP MUST BE USED.

## IF DISASSEMBLY IS REQUIRED

## CAUTION

REPEATED DISASSEMBLY IS NOT RECOMMENDED.

## NOTE

Use either 7/64" or 3mm hex wrenches or a combination of both to disassemble the lift blocks.

1. Insert an Hex wrench into both retaining slots by pushing the wrench up the ramp of the retaining snap (fig. 9). This will separate the snaps from the mating block and the wrenches will be held in place by the snap.
2. Now take hold of each block and rotate the lower lift block assembly counterclockwise.

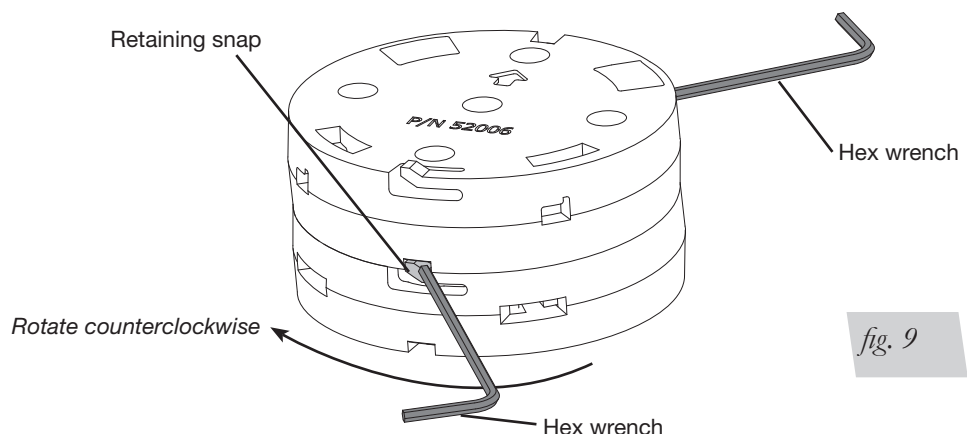


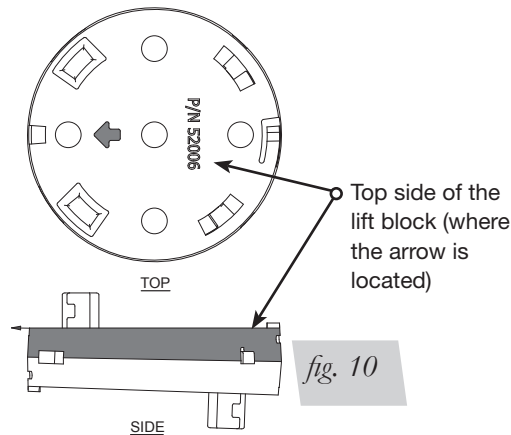
fig. 9

## ADDING ADDITIONAL LIFT BLOCKS

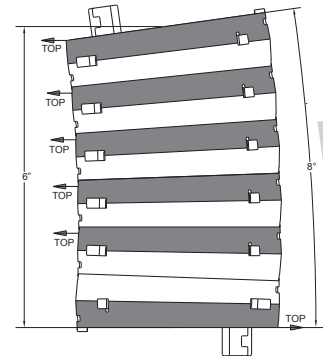
1. A variety of angles and heights can be achieved by adding additional blocks in differing orientations. In figure 10, the top surface of a lift block is identified. Shown below are diagrams of a 4" and 6" system with parallel surfaces and surfaces at a 4-degree angle. An 8-degree assembly with a 6" lift is also possible, but not recommended (fig. 11). Figure 12 shows the preferred installation method with a 4" and 6" straight assembly. Figure 13 shows the 4-degree assembly for a 4" and 6" lift block system.

### NOTE

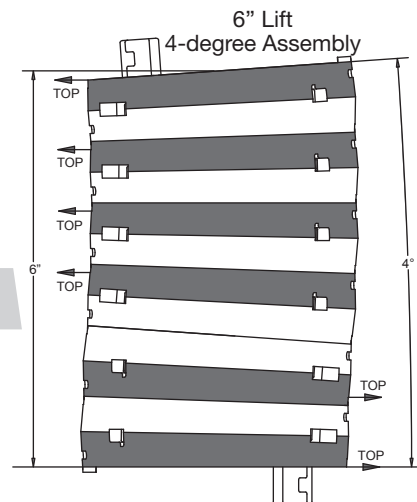
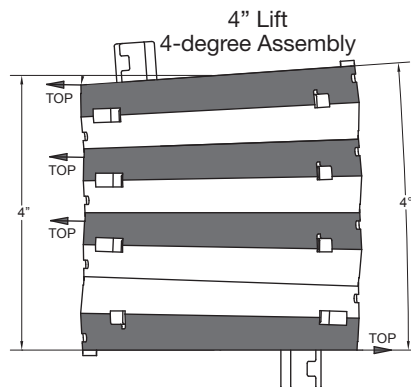
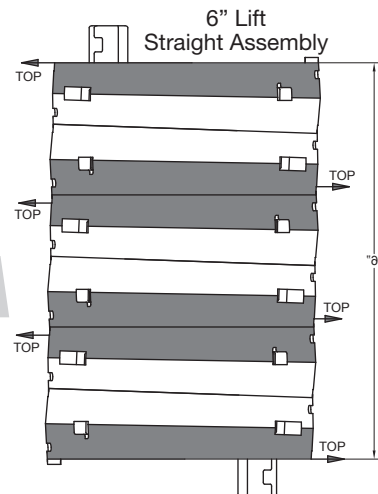
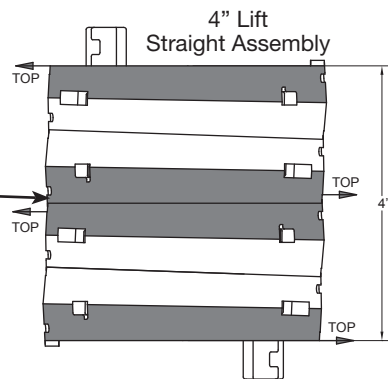
*It may take significant force to lock the two lift blocks together in the top-to-top position. It may be necessary to use a table top or other hard surface to aid in pushing the lift blocks together.*



6" Lift 8-degree Assembly -  
Not Recommended



*It may take significant force to lock the two lift blocks together in the top-to-top position.*



# Notes

# Notes

## Limited Warranty and Return Policy

Air Lift Company provides a limited lifetime warranty to the original purchaser of its Load Support products, that the products will be free from defects in workmanship and materials when used on cars and trucks as specified by Air Lift Company and under normal operating conditions, subject to the requirements and exclusions set forth in the full Limited Warranty and Return Policy that is available online at [www.airliftcompany.com/warranty](http://www.airliftcompany.com/warranty).

For additional warranty information contact Air Lift Company customer service.

## Replacement Part Information

If replacement parts are needed, contact the local dealer or call Air Lift customer service at **(800) 248-0892**. Most parts are immediately available and can be shipped the same day.

**Contact Air Lift Company customer service at (800) 248-0892 first if:**

- Parts are missing from the kit.
- Need technical assistance on installation or operation.
- Broken or defective parts in the kit.
- Wrong parts in the kit.
- Have a warranty claim or question.

**Contact the retailer where the kit was purchased:**

- If it is necessary to return or exchange the kit for any reason.
- If there is a problem with shipping if shipped from the retailer.
- If there is a problem with the price.

## Contact Information

<b>Mailing address</b>	P.O. Box 80167 Lansing, MI 48908-0167
<b>Shipping address for returns</b>	2727 Snow Road Lansing, MI 48917
<b>Phone</b>	Toll free: (800) 248-0892 International: (517) 322-2144
<b>Email</b>	<a href="mailto:service@airliftcompany.com">service@airliftcompany.com</a>
<b>Web address</b>	<a href="http://www.airliftcompany.com">www.airliftcompany.com</a>

## **Need Help?**

**Contact Air Lift Company customer service department by calling (800) 248-0892.**

**For calls from outside the USA or Canada, dial (517) 322-2144.**



*Thank you for purchasing Air Lift products — the professional installer's choice!*

Air Lift Company • 2727 Snow Road • Lansing, MI 48917 or P.O. Box 80167 • Lansing, MI 48908-0167  
Toll Free (800) 248-0892 • Local (517) 322-2144 • Fax (517) 322-0240 • [www.airliftcompany.com](http://www.airliftcompany.com)

Printed in the USA  
JJC-0117