



# Ventvisor® Deflector

## Quick and Easy Installation Instructions

### CONTENTS

- (2) front visors
- (2) alcohol pads
- (2) rear visors
- (1) instruction sheet

**IMPORTANT:** Read all instructions carefully before beginning the installation. Visors are marked to show position, LF for left front, etc. A trial fit is recommended. The ideal installation temperature is between 65°-110°F (18°-43°C).

**STEP 1:** Clean the metal door frame around the window with an alcohol pad and wipe dry with a clean cloth. Repeat for remaining doors. Peel off the tape liner from the rear end flange of the visor. To reduce the risk of tape contamination due to improper positioning, expose only 2" (5 cm) of tape from each end of the lateral flange by peeling back liner. See **FIGURE 1**

**STEP 2:** Locate the triangular plastic mirror cap on the inside door panel of the vehicle. Carefully remove the plastic mirror cap to expose the mirror mounting hardware. Using a nut driver or socket, loosen, **but do not remove**, the mirror mounting bolts. This will create the necessary gap behind the mirror cap to install the front flange of the visor. See **FIGURE 2**

**STEP 3:** Position the visor on the metal door frame as shown in **FIGURE 3**. Gently press exposed tape against the door and verify position.

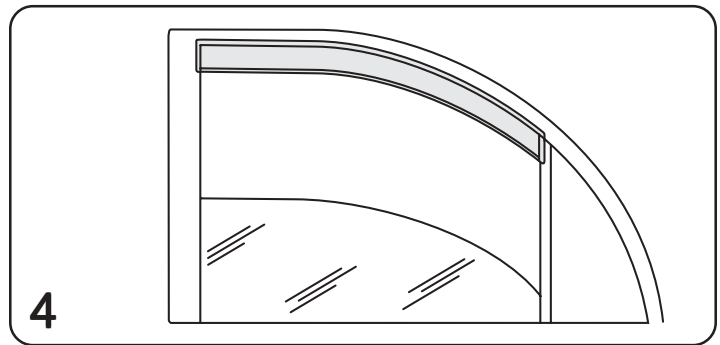
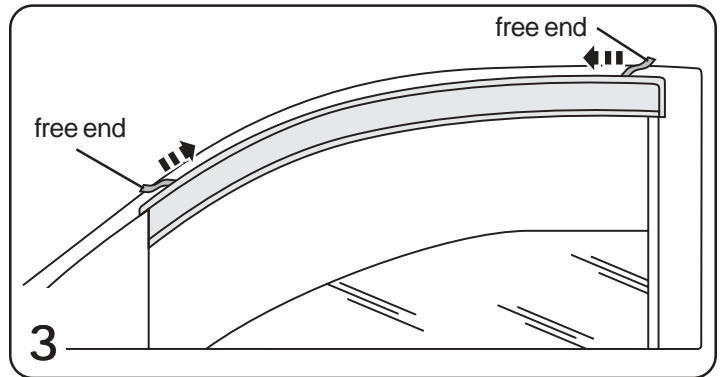
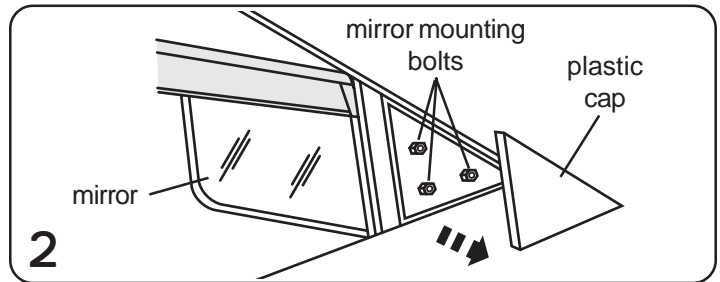
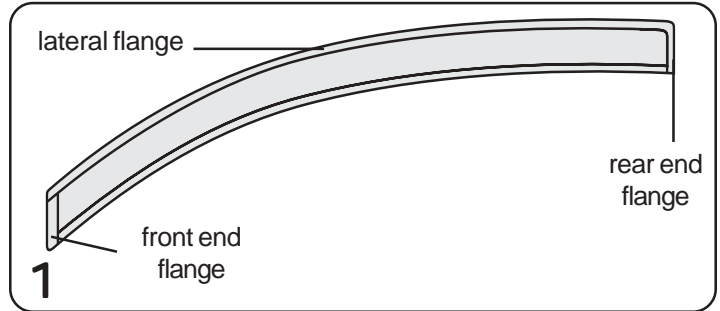
**STEP 4:** With the visor properly positioned, press firmly against the exposed tape areas and remove the remaining tape liner by pulling on the free ends. Press all along the entire flange to ensure good adhesion of the tape.

**STEP 5:** Retighten the mirror mounting bolts and replace the plastic mirror cap on the inside of the door. To avoid damaging the visor, **do not overtighten the mirror mounting bolts**.

Repeat steps 1 - 5 for the passenger's side visor.

**STEP 6:** See **FIGURE 4** for proper placement of the rear visor. Follow the mounting methods used in steps 3 & 4.

NOTE: Actual application may vary slightly from pictures.



### Congratulations!

You have purchased one of the many quality items manufactured by Auto Ventshade. We take the utmost pride in our products and want you to enjoy years of satisfaction from your investment. We have made every effort to ensure that your product is top quality in terms of fit, durability, finish and ease of installation.



655 RACO DRIVE  
LAWRENCEVILLE, GA 30245 U.S.A.

1-800-241-7219

WWW.AUTOVENTSHADE.COM

© 2003 LUND INTERNATIONAL, INC. ALL RIGHTS RESERVED.  
AUTO VENTSHADE™ AND THE AUTO VENTSHADE™ LOGO  
ARE TRADEMARKS OF LUND INTERNATIONAL, INC.