



### STEP 1 – PRIOR TO INSTALLATION

- A) Bushwacker only** approves installing the flares according to these written instructions with the hardware provided. **WARNING:** Failure to install according to these instructions will invalidate the warranty. This includes, but is not limited to using alternative installation methods, hardware, or materials. **DO NOT USE:** Loctite, SuperGlue, or similar products on the hardware or the flares.
- B) Fit:** Verify the fit of the flares to vehicle. (Some filing, sanding, or cutting may be necessary to ensure proper fit).
- C) Painting:** (Optional) if paint is desired it must be done prior to installing flares on vehicle. Clean outer surface with a good grade degreaser. **DO NOT USE LACQUER THINNER OR ENAMEL REDUCER AS A DEGREASER.** Wipe outer surface thoroughly with a tack rag prior to paint. Application of plastic adhesion promoter for ABS plastic as per your paint system manufacturer's recommendations is required. Paint flares using a high quality enamel, or polyurethane automotive paint. If painting edge trim (not recommended), use a flex additive.
- D) Performance:** Using larger Tires may increase the area required to turn the vehicle. Some Tire/Rim combinations may require lowering bump stops and or installing steering stops to prevent tire from contacting flare.
- E) Exhaust System:** Modifications may be necessary to maintain a minimum 4" clearance between flares and exhaust pipes. (Exhaust gases should not vent directly onto flares)
- F) Metal Protection:** All exposed fasteners and bare metal should be treated with rust resistant paint **BEFORE** installing flares. Spray inner fender wells with undercoating **AFTER** flare attachments have been completed.
- G) Decals:** Flares may interfere with existing decals on vehicle. If you wish, remove decals prior to installation of flares.
- H) Care & Cleaning:** Bushwacker fender flares are built to last; any detergent you use to wash your vehicle is sufficient to clean the flare. Do not use any harsh abrasive detergents.

# Jeep® Flat Style Fender Flares Set of 4

Set Part #10924-07

Rev-3 03/01/2016

For complete fitment info visit : [www.bushwacker.com](http://www.bushwacker.com)

### TOOLS FOR EASY INSTALLATION:

- Utility Knife
- #2 Phillips Drive Bit/ Screwdriver
- Electric Drill
- 7/32" Drill Bit
- 1/4" Drill Bit
- Socket Wrench
- 5/16" Socket
- 3/8" Socket
- 11/32" Sockets
- 6" Socket Extension
- Needle Nose Pliers
- Scratch Awl (or similar pointed tool)
- Wire Cutter & Stripper
- 22-18 Gauge Wire Crimp
- Grease Pencil
- Soft Wiping Cloth/Shop Towels
- Heat Gun
- Pry bar/Claw Hammer
- Safety Glasses
- Helper/Partner

**PLEASE READ:** Dirt and debris can become lodged between the fender flares and the vehicle's fenders, causing scratching and paint wear from vibration. Lund International is not responsible for any damage, and the installation of our fender flares is done with the buyer's understanding that this scratching and paint wear may occur.

### LIMITED LIFETIME WARRANTY AGAINST ANY MANUFACTURING DEFECTS

- To claim a warranty, you must provide Proof of Purchase.

## Included in Hardware Kit:

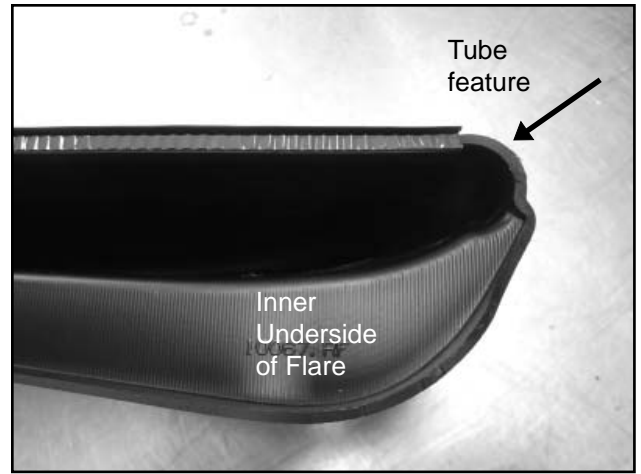
- |   |   |   |   |  |   |  |
|---|---|---|---|--|---|--|
| 1. <br>SW1-0056,<br>#8 x 3/4"<br>PH Screw,<br>24 pcs          | 2. <br>CL1-0022,<br>#10 "U" Clip,<br>24 pcs              | 3. <br>WA1-0003,<br>#10 SAE<br>1/2" Flat Washer,<br>32 pcs | 4. <br>SW1-0053,<br>M5-.8 x 25mm<br>Phllps Mach Screw,<br>28 pcs | 5. <br>NU1-0010,<br>M5 x.8 Serrated<br>Flange Hex Nut,<br>28 pcs | 6. <br>SW1-0054,<br>8-32 x 1" Phillips<br>SS PH Screw,<br>4 pcs        | 7. <br>NU1-0018,<br>8-32 SS<br>Nylock Nut,<br>4 pcs |
| 8. <br>LT1-0003,<br>4" Slimline Marker<br>Light 1GD,<br>2 pcs | 9. <br>LT1-0002,<br>Spitfire Side<br>Reflector,<br>2 pcs | 10. <br>EC1-0007,<br>22-18GA<br>Wire Connector,<br>4 pcs   | 11. <br>AD1-0008,<br>ALCOHOL PREP<br>PAD,<br>6 pcs               | 12. <br>ET1-0002,<br>Edge Trim Tool,<br>1 pc                     | 13. <br>GP1-0006,<br>Wiper Style (2-<br>tape) Edge Trim,<br>222 inches |  |

**STEP 2 - EDGE TRIM INSTALLATION (DO NOT INSTALL EDGE TRIM ON THE SMALLER INNER PIECES! ONLY THE FLARE PIECES NEED IT!)**

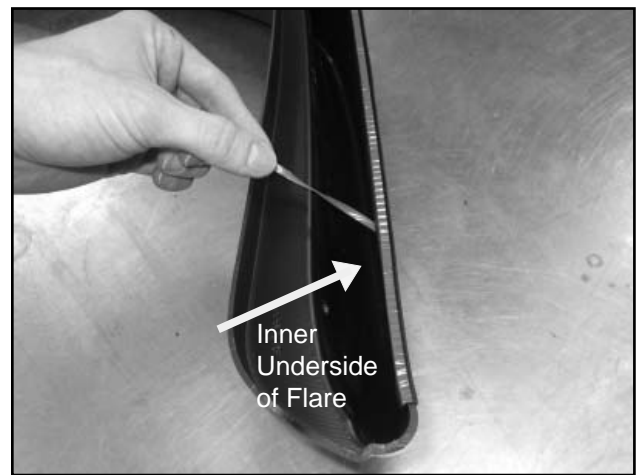
The edge trim for this application is double-tape edge trim so special care needs to be taken while installing. There is red vinyl backing on the inside of the edge trim where it will adhere to the flare and red vinyl backing on the outside where it will adhere to the vehicle. The following steps only concern where the edge trim will adhere to the flare. Additional edge trim installation instructions are included during the rest of the installation process.

A. Peel two to three inches of red vinyl backing away from Edge Trim (GP1-0006) tape. Applying the adhesive side of the edge trim to the inner side of the flare, affix the edge trim to the top edge of the flare (the portion that comes in contact with the vehicle). Stop at tube feature of flare. **Picture 1 for tube feature reference.**

B. Press edge trim into place along the top edge of the flare in one-foot increments, pulling red vinyl backing free as you continue to work your way around the top edge of the flare. **Picture 2 for additional edge trim orientation**



**Picture 1**



**Picture 2**

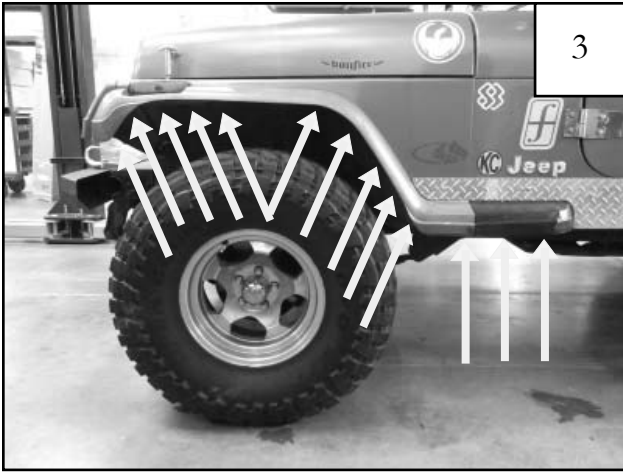
**Front Flare Installation Procedures (Driver's Side):**



Unplug the factory installed side marker lamp by twisting the bulb housing in a counterclockwise direction. This is located at the front of the factory flare on the backside in the wheel well.



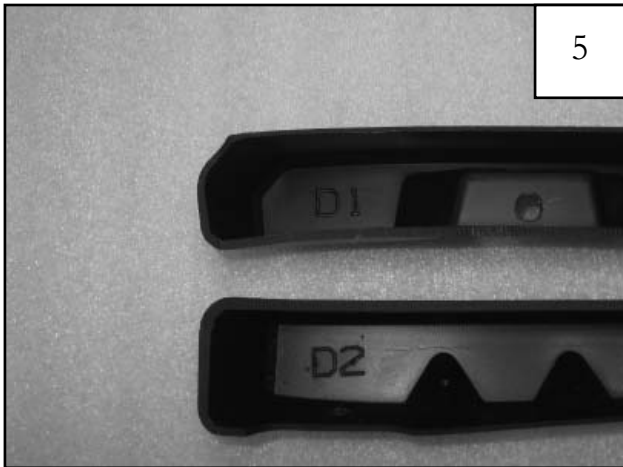
Remove the factory installed side marker lamp using a #2 phillips head screw driver.



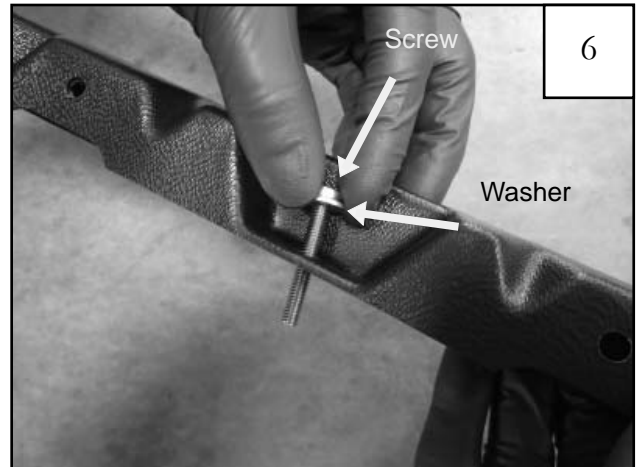
Remove the factory installed fender flare and rocker guard screws with a socket wrench. (12 total locations) 9 on main flare (use 5/16" socket), 3 on rocker panel (use 3/8" socket)



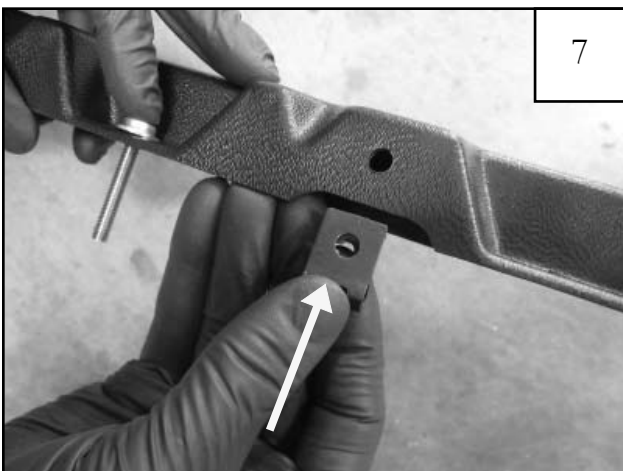
Remove the factory installed fender flares. Thoroughly clean the exposed metal fender with a damp cloth and dry.



Locate the flat flare front inner pieces. The driver side front inner pieces are marked D1 & D2. The passenger side front inner pieces are marked P1 & P2.



Put an Screw (SW1-0053) and Washer (WA1-0003) through the top holes of the inner pieces.



Install a Clip (CL1-0022) at each clip location on the inner pieces, centering them on the predrilled holes. (6 locations)



Secure inner piece D1 (and P1 for passenger side installation) to the sheet metal using the following **3 Steps: Step 1** Line up the Screws (SW1-0053) with the factory hole locations and push them into place on the fender.



9

**Step 2** Attach Nuts (NU1-0010) to the threads on the Screws (SW1-0053) and hand tighten.



10

**Step 3** Fully tighten Nuts (NU1-0010) using a 5/16" socket wrench and a # 2 Phillips bit for the Screws (SW1-0053).



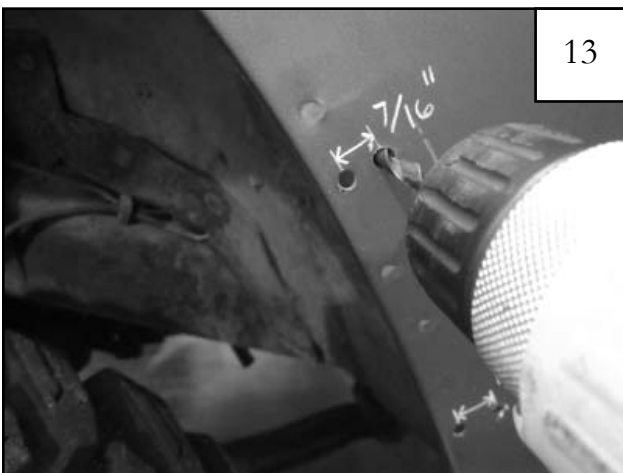
11

Locate the third factory hole from bottom of fender. Use a grease pencil to mark a hole for drilling 7/16" from center of factory hole, perpendicular with wheel well opening.



12

Locate the second factory hole from bottom of fender. Use a grease pencil to mark a hole for drilling 11/16" from center of factory hole, perpendicular with wheel well opening.



13

Using a 1/4" drill bit, drill marked holes.



14

Secure inner piece D2 (and P2 for passenger side installation) to the sheet metal using the following 2 Steps: **Step 1** Line up the three Screws (SW1-0053) with the upper factory hole and two drilled locations.



**Step 2** Attach Nuts (NU1-0010) to the threads on the Screws(SW1-0053) and hand tighten.



Make sure that inner piece D2 lines up with inner piece D1 before fully tightening. (for passenger side P1 and P2)



**Step 3** Fully tighten Nuts (NU1-0010) using a 5/16" socket wrench and a # 2 Phillips bit for the Screws (SW1-0053).



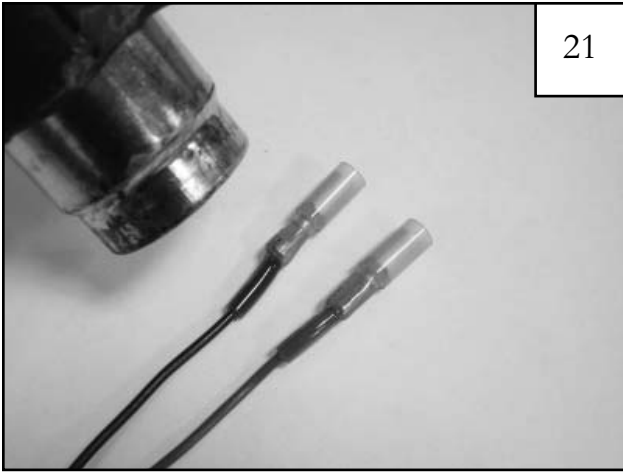
Use wire cutters to cut the two wires at the base of the factory side marker lamp.



Use wire strippers to strip away approximately 3/8" of wire covering from the factory installed side marker lamp wires.



Install a Connector (EC1-0007) to the end of each factory side marker light wire and secure by pressing firmly with a wire crimp.



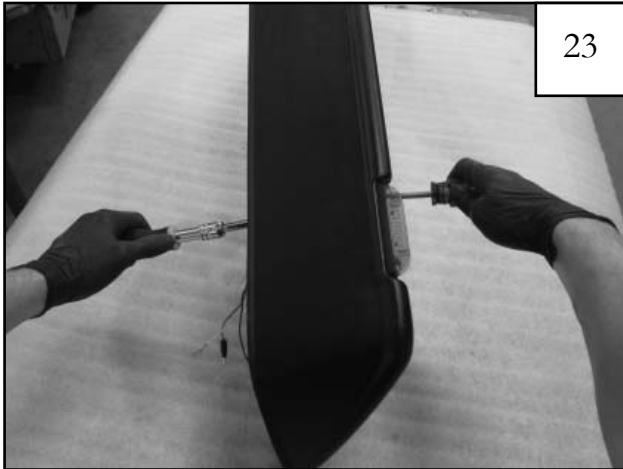
21

Seal heat shrink tubing on wire using a heat gun.



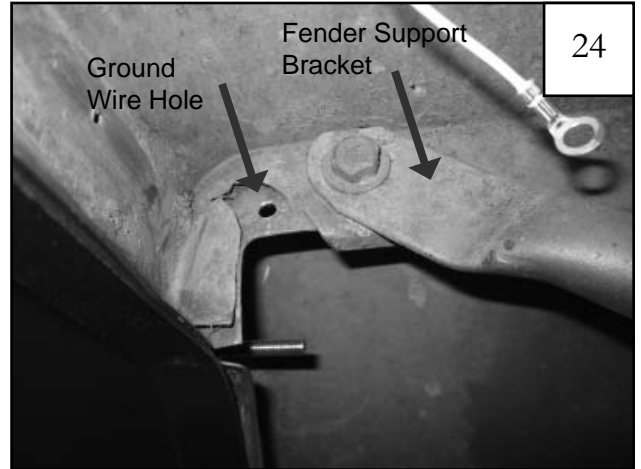
22

Position the supplied Light (LT1-0003) onto the outer flare piece, threading the wires through the center predrilled hole.



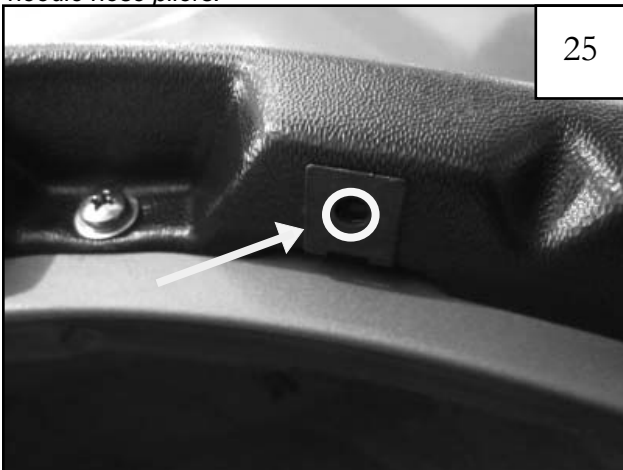
23

Secure the side marker light to the outer flare with Screw (SW1-0054), Nut (NU1-0018) and Washer (WA1-0003) using a #2 Phillips bit and a 11/32" socket with 6" extension. (2 places) *NOTE: If you are having trouble putting the washer and nut on the screw, use needle nose pliers.*



24

Using a 7/32" drill bit, drill hole in sheet metal at location shown near upper support bracket on front fender. This hole will be used later as a wire ground location for the Light (LT1-0003).



25

Before installing the outer flare, make sure that the Clips (CL1-0022) on the inner pieces are centered over the predrilled holes.



26

**OPTIONAL:** If aftermarket rocker pieces are installed, you *may* need to trim them for a proper fit. If so, place main flare over inner pieces and use a grease pencil to mark rocker pieces for trimming.



27

**OPTIONAL:** Hold included plastic rocker panel up to vehicle and use a grease pencil to mark for trimming on aftermarket rocker pieces. Remove parts from vehicle and trim aftermarket rocker piece as needed.



28

Use one supplied Wipe (AD1-0008) to clean the *sheet metal* above each inner piece in preparation to tape the edge trim to the sheet metal. *This must be done for proper flare installation.*



29

Peel back 1-2" of red liner on each end of the Edge Trim (GP1-0006) and bend toward the outside of the flare.



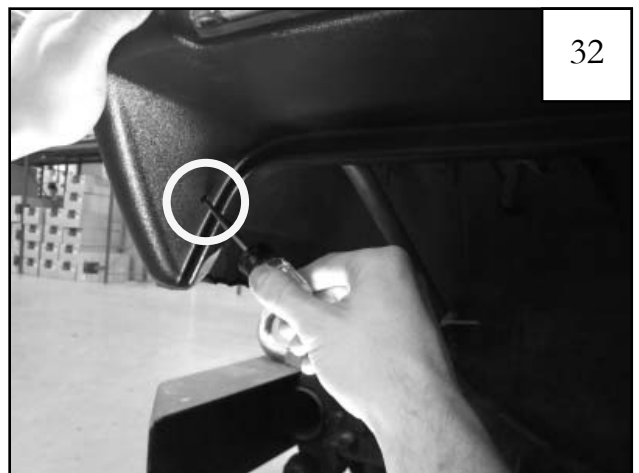
30

Hold the outer flare up to the fender and thread Light (LT1-0003) wires through hole in the inner piece.



31

Place the outer flare over the inner pieces and push until snug against the sheet metal. Make sure that the Light (LT1-0003) wires are routed through inner piece hole.

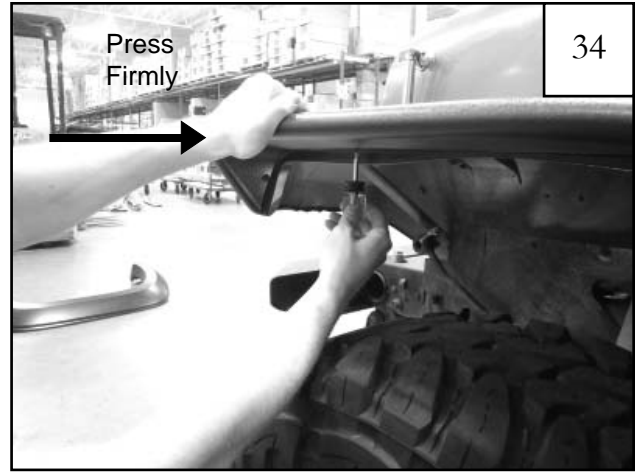


32

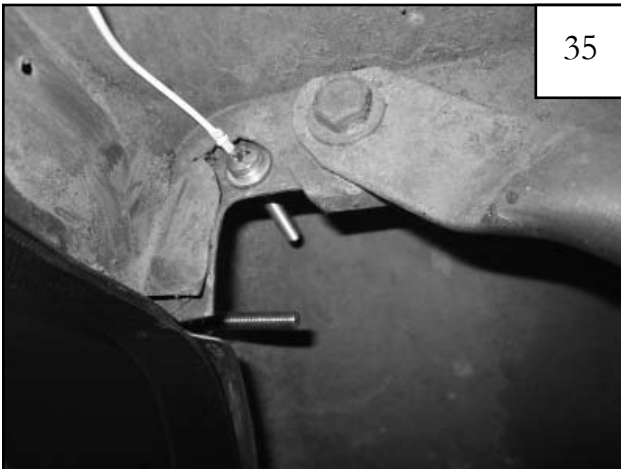
Use a scratch awl (or similar pointed tool) to line up the Clips (CL1-0022) with the outer flare holes (6 locations). If needed, use a flashlight to better locate the Clips.



Hold flare in place on fender and start a Screw (SW1-0056) into *each* hole location and through Clip (CL1-0022) on inner structure (6 places). *Do not tighten.*



Tighten the Screws (SW1-0056) by *firmly* pressing the flare toward the vehicle *while* tightening.



Attach the ground wire from the Light (LT1-0003) with a Screw (SW1-0053), Washer (WA1-0003), and Nut (NU1-0010) using a Phillips head screw driver and 5/16" socket and wrench at the location drilled in Step 24.



Connect the light wires with the vehicle wires by attaching the male connectors to the Connectors (EC1-0007). Test the connection by turning on the front turn signal. Switch connectors if necessary.

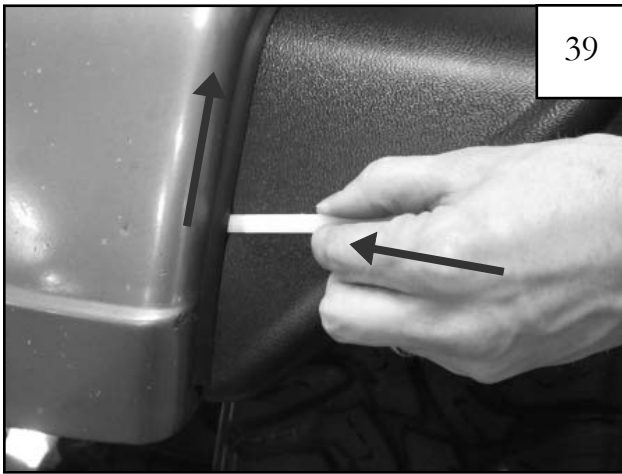


Peel outer tape liner from the Edge Trim (GP1-0006). Push down *lightly* on the fender flare to create a small gap between the sheet metal and the edge trim. This makes it easier to pull the red liner.

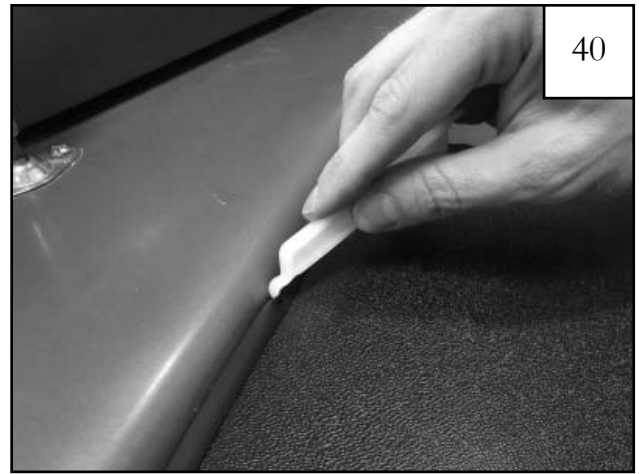


After the red liner is removed, *firmly* press the flare toward the vehicle for 10 seconds to adhere the tape to the vehicle surface. Repeat this process for the entire length of the flare. The vehicle surface temperature must be between 65-110° F for proper adhesion. Allow 24 hours for full adhesion.





39 Starting at one end, use the flat edge of the supplied Edge Trim Tool (ET1-0002) to further adhere the edge trim to the vehicle surface. Slide the tool along the edge trim while pressing it in toward the vehicle surface.



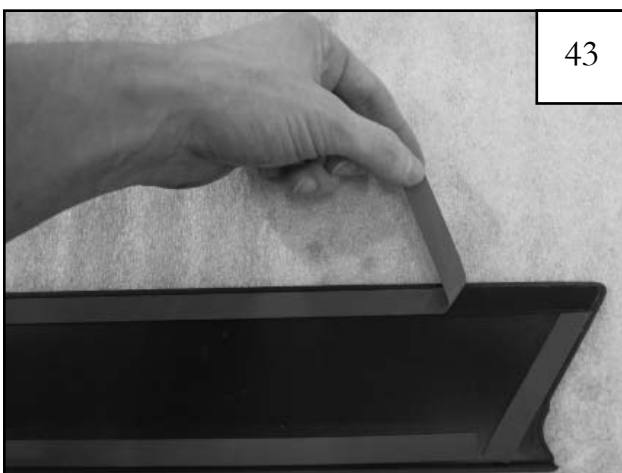
40 Use the hooked end of the Edge Trim Tool (ET1-0002) to check for full adhesion. Do this by sliding it along the top of the edge trim to visually verify that the tape is adhered to the vehicle surface. Repeat Step 39 if tape is not fully adhered to the vehicle surface.



41 Attach one Reflector (LT1-0002) to the side of the vehicle by peeling off the adhesive backing and pressing it firmly onto the cleaned vehicle surface. **NOTE: Once Reflector has adhered it cannot be repositioned.**



42 Use one supplied Wipe (AD1-0008) to clean the *sheet metal* in preparation to tape the supplied rocker panel piece to the sheet metal. **This must be done for proper adhesion.**



43 Peel back 1-2" of red liner on each end of the pieces of tape on supplied rocker panel and bend toward the outside of the part.



44 Position rocker panel piece on vehicle and peel away the outer tape liner. Hold against the vehicle lightly. This makes it easier to pull the red liner.



After the red liner is removed, *firmly* press the rocker panel against the vehicle for 10 seconds to adhere the tape to the vehicle surface. The vehicle surface temperature must be between 65-110° F for proper adhesion. Allow 24 hours for full adhesion.



Completed front driver's side flare and rocker panel installation.

# Rear Flare Installation Procedures (Driver's Side):



Remove the factory installed fender flare screws with a 5/16" socket wrench. (8 locations)



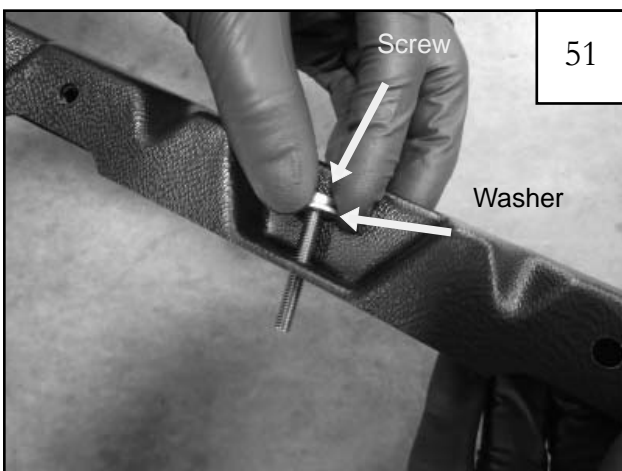
Using a pry bar or claw hammer, remove the christmas tree fasteners then remove/loosen the rear wheel well skirting. Save fasteners for reinstallation.



Thoroughly clean the exposed metal fender with a damp cloth then dry.



Locate the flat flare rear inner pieces. The driver side rear inner pieces are marked D3 & D4. The passenger side rear inner pieces are marked P3 & P4.



Put an Screw (SW1-0053) and Washer (WA1-0003) through the top holes of the inner pieces.



Install a Clip (CL1-0022) at each Clip location on the inner pieces, centering them on the predrilled holes. (6 locations)



Secure inner piece D3 (and P3 for passenger side installation) to the sheet metal using the following 3 **STEPS: Step 1** Line up the Screws (SW1-0053) with the factory hole locations.



**Step 2** Attach Nuts (NU1-0010) to the threads on the Screws (SW1-0053) and hand tighten.



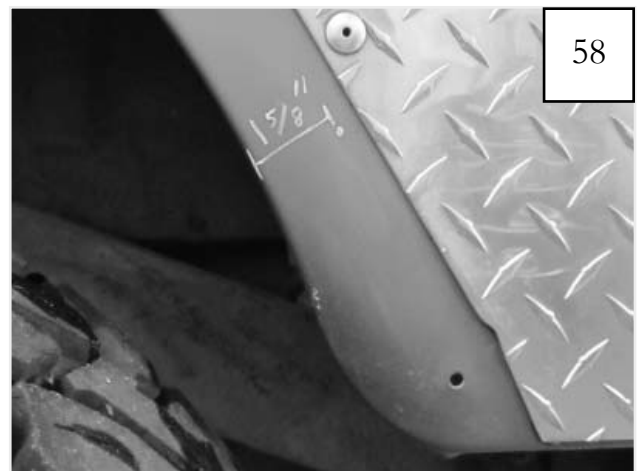
**Step 3** Fully tighten Nuts (NU1-0010) using a 5/16" socket wrench and a # 2 Phillips bit for the Screws (SW1-0053).



To attach inner piece D4 (P4 for passenger side) you will need to drill 1 new hole location in the sheet metal. Do this by first placing inner piece D4 on vehicle using only top 2 screws in order to align for marking of lower fastening hole.



Using a grease pencil or marker, mark lower hole of inner piece D4 (P4 for passenger side) for drilling. Then remove inner piece D4 from vehicle.



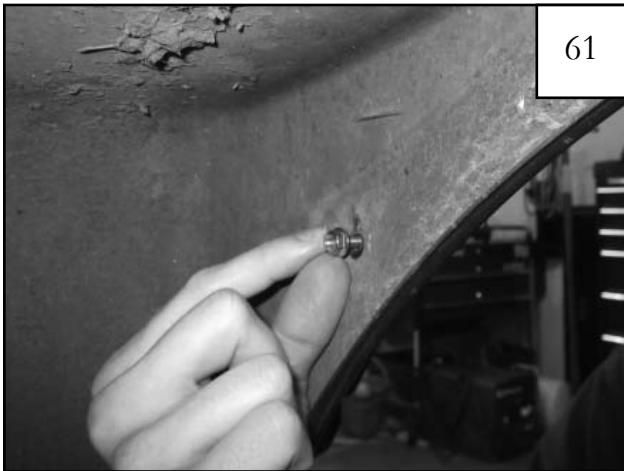
The hole marked for drilling should be 1-5/8" away from (and perpendicular to) the wheel well opening. Adjust mark for drilling as needed.



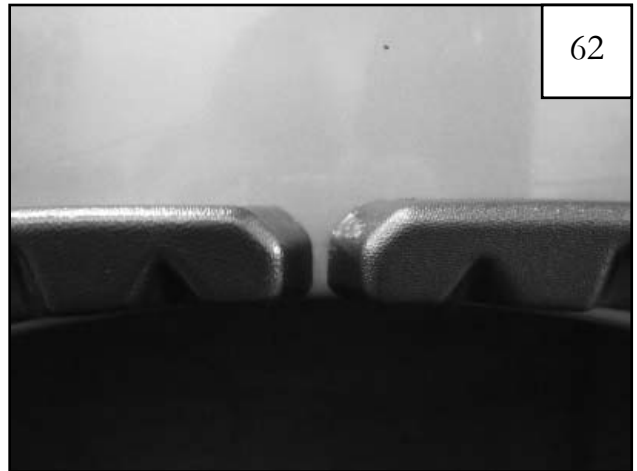
Using a 1/4" drill bit, drill marked hole.



Secure inner piece D4 (P4 for passenger side) to the sheet metal using the following **4 STEPS**:  
**Step 1** Line the Screws (SW1-0053) and Washers (WA1-0003) with the factory hole locations and drilled hole.



**Step 2** Attach Nuts (NU1-0010) to the threads on the Screws (SW1-0053) and hand tighten.



**Step 3** Make sure that inner piece D4 lines up with inner piece D3 before fully tightening. (for passenger side P4 and P3).



**Step 4** Fully tighten Nuts (NU1-0010) using a 5/16" socket wrench and a # 2 Phillips bit for the Screws (SW1-0053).



**OPTIONAL:** If aftermarket corner panels or rocker pieces are installed, you *may* need to trim them for a proper fit. If so, place main flare over inner pieces and use a grease pencil to mark them for trimming. Then remove flare and trim as needed.



65

Use one supplied Wipe (AD1-0008) to clean the *sheet metal* above each inner piece in preparation to tape the edge trim to the sheet metal. *This must be done for proper flare installation.*



66

Peel back 1-2" of red liner on each end of the Edge Trim (GP1-0006) and bend toward the outside of the flare.



67

Place the outer flare over the inner pieces and push until snug against the vehicle surface.



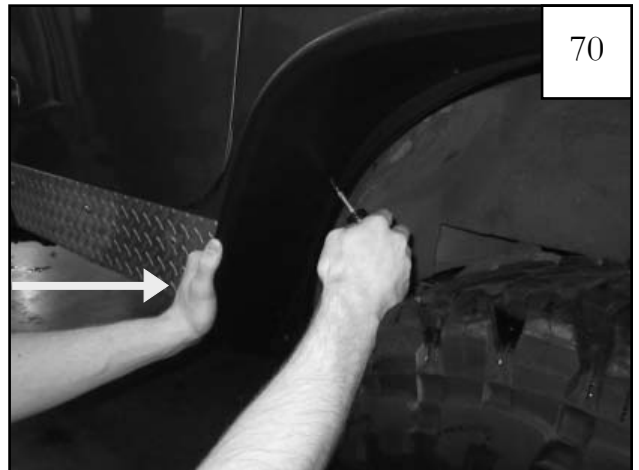
68

Use a scratch awl (or similar pointed tool) to line up the Clips (CL1-0022) with the outer flare holes (6 locations). If needed, use a flashlight to better locate the Clips.



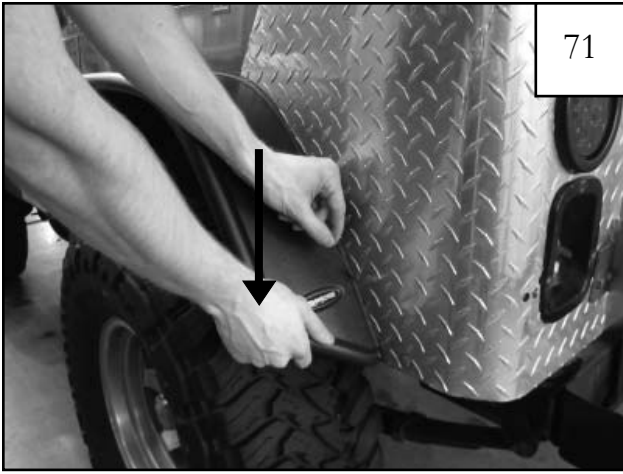
69

Hold flare in place on fender and start a Screw (SW1-0056) into each hole location and through the Clip (CL1-0022) on inner structure (6 locations). *Do not tighten.*



70

Tighten the Screw (SW1-0056) by *firmly* pressing the flare toward the vehicle while tightening the Screws.



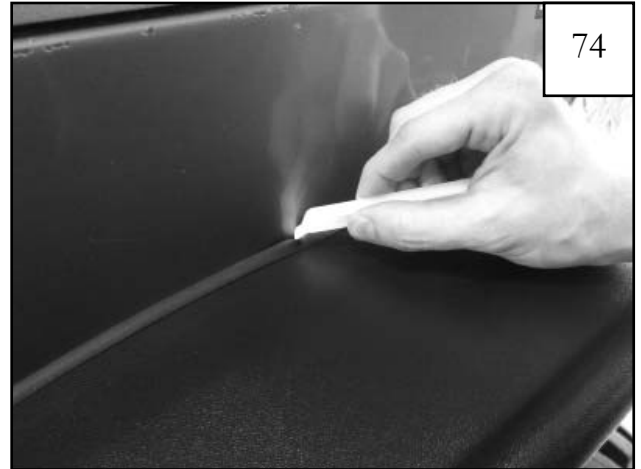
71  
Peel outer tape liner from the Edge Trim (GP1-0006). Push down *lightly* on the fender flare to create a small gap between the sheet metal and the edge trim. This makes it easier to pull the red liner.



72  
*Firmly* press the flare toward the vehicle for 10 seconds to adhere the tape to the vehicle surface. Repeat this process moving along the entire length of the flare. The vehicle surface temperature must be between 65-110° F for proper adhesion. Allow 24 hours for full adhesion.



73  
Starting at one end, use the flat edge of the supplied Edge Trim Tool (ET1-0002) to further adhere the edge trim to the vehicle surface. Slide the tool along the edge trim while pressing it in toward the vehicle surface.



74  
Use the hooked end of the Edge Trim Tool (ET1-0002) to check for full adhesion. Do this by sliding it along the top of the edge trim to visually verify that the tape is adhered to the vehicle surface. Repeat Step 73 if the tape is not fully adhered to the vehicle surface.



75  
Using fasteners removed in Step 48, reinstall the rear wheel well skirting.



76  
Completed rear driver's side flare installation.

# Flare Height & Tire Coverage (Driver's Side):

